

Histone H3K27ac (Acetyl Lys27) antibody [GT261]

Cat. No. GTX633652

Host	Mouse
Clonality	Monoclonal
Isotype	IgG1
Application	WB, IHC-P
Reactivity	Human, Mouse, Rat

Package
100 µl, 25 µl

APPLICATION

Application Note

*Optimal dilutions/concentrations should be determined by the researcher.

Suggested dilution	Recommended dilution
WB	1:500-1:3000
IHC-P	1:100-1:1000

Not tested in other applications.

PROPERTIES

Form	Liquid
Buffer	PBS
Preservative	No preservative
Storage	Store as concentrated solution. Centrifuge briefly prior to opening vial. For short-term storage (1-2 weeks), store at 4°C. For long-term storage, aliquot and store at -20°C or below. Avoid multiple freeze-thaw cycles.
Concentration	1 mg/ml (Please refer to the vial label for the specific concentration.)
Immunogen	Carrier-protein conjugated synthetic peptide surrounding acetyl Lys27 of human Histone H3. The exact sequence is proprietary.
Purification	Affinity purified by Protein G.
Conjugation	Unconjugated

Note

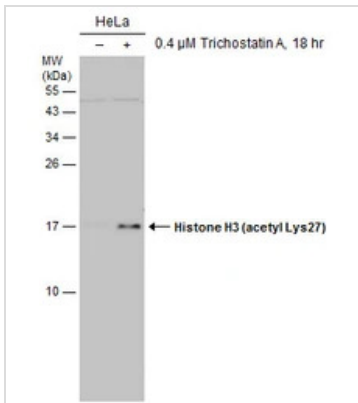
For laboratory research use only. Not for any clinical, therapeutic, or diagnostic use in humans or animals. Not for animal or human consumption.

Purchasers shall not, and agree not to enable third parties to, analyze, copy, reverse engineer or otherwise attempt to determine the structure or sequence of the product.



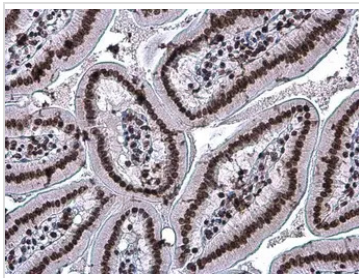
For full product information, images and publications, please visit our [website](#).

DATA IMAGES



GTX633652 WB Image

Untreated (–) and treated (+) HeLa whole cell extracts (30 μg) were separated by 15% SDS-PAGE, and the membrane was blotted with Histone H3 (acetyl Lys27) antibody [GT261] (GTX633652) diluted at 1:1000.



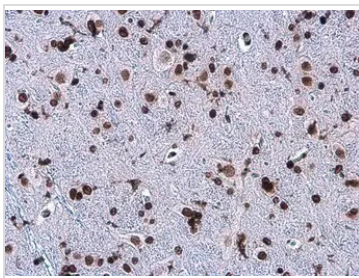
GTX633652 IHC-P Image

Histone H3K27ac (acetyl Lys27) antibody [GT261] detects Histone H3K27ac (acetyl Lys27) protein at nucleus in mouse duodenum by immunohistochemical analysis.

Sample: Paraffin-embedded mouse duodenum.

Histone H3K27ac (acetyl Lys27) antibody [GT261] (GTX633652) diluted at 1:200.

Antigen Retrieval: Citrate buffer, pH 6.0, 15 min



GTX633652 IHC-P Image

Histone H3K27ac (acetyl Lys27) antibody [GT261] detects Histone H3K27ac (acetyl Lys27) protein at nucleus in rat brain by immunohistochemical analysis.

Sample: Paraffin-embedded rat brain.

Histone H3K27ac (acetyl Lys27) antibody [GT261] (GTX633652) diluted at 1:200.

Antigen Retrieval: Citrate buffer, pH 6.0, 15 min



For full product information, images and publications, please visit our [website](https://www.genetex.com).