

Heme Oxygenase 1 antibody [GT17811]

Cat. No. GTX633677

| | |
|--------------|-----------------------------------|
| Host | Mouse |
| Clonality | Monoclonal |
| Isotype | IgG2a |
| Applications | WB, ICC/IF, ELISA, Sandwich ELISA |
| Reactivity | Human |

Package
100 µl, 25 µl

Applications

Application Note

*Optimal dilutions/concentrations should be determined by the researcher.

| Suggested dilution | Recommended dilution |
|--------------------|----------------------|
| WB | 1:500-1:3000 |
| ICC/IF | 1:100-1:1000 |
| ELISA | Assay dependent |
| Sandwich ELISA | Assay dependent |

Note : Capture : GTX633677, Detection: GTX101147

Not tested in other applications.

Calculated MW 33 kDa. ([Note](#))

Product Note This antibody is specific for human HMOX1 protein, and it does not cross react with human HMOX2 protein.

Properties

| | |
|---------------|--|
| Form | Liquid |
| Buffer | PBS |
| Preservative | No preservatives |
| Storage | Store as concentrated solution. Centrifuge briefly prior to opening vial. For short-term storage (1-2 weeks), store at 4°C. For long-term storage, aliquot and store at -20°C or below. Avoid multiple freeze-thaw cycles. |
| Concentration | 1 mg/ml (Please refer to the vial label for the specific concentration.) |
| Immunogen | Recombinant protein encompassing a sequence within the center region of human Heme Oxygenase 1. The exact sequence is proprietary. |
| Purification | Affinity purified by Protein A. |
| Conjugation | Unconjugated |



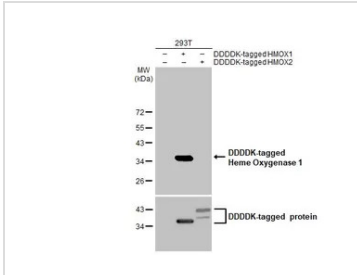
For full product information, images and publications, please visit our [website](#).

For laboratory research use only. Not for any clinical, therapeutic, or diagnostic use in humans or animals. Not for animal or human consumption.

Note

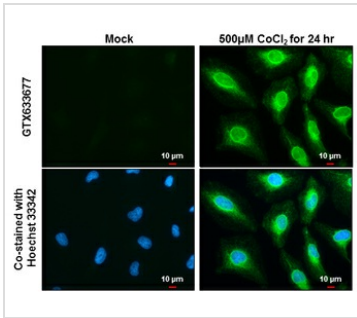
Purchasers shall not, and agree not to enable third parties to, analyze, copy, reverse engineer or otherwise attempt to determine the structure or sequence of the product.

DATA IMAGES



GTX633677 WB Image

Non-transfected (-) and transfected (+) 293T whole cell extracts (30 µg) were separated by 12% SDS-PAGE, and the membrane was blotted with Heme Oxygenase 1 antibody [GT17811] (GTX633677) diluted at 1:5000. The HRP-conjugated anti-mouse IgG antibody (GTX213111-01) was used to detect the primary antibody.



GTX633677 ICC/IF Image

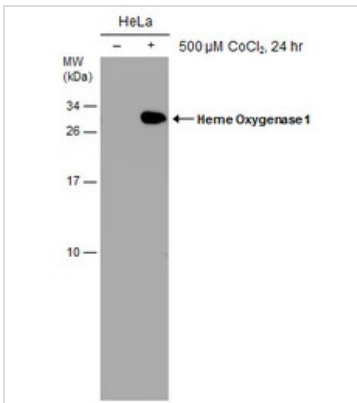
Heme Oxygenase 1 antibody [GT17811] detects Heme Oxygenase 1 protein at endoplasmic reticulum by immunofluorescent analysis.

Sample: Mock and treated HeLa cells were fixed in 4% paraformaldehyde at RT for 15 min.

Green: Heme Oxygenase 1 stained by Heme Oxygenase 1 antibody [GT17811] (GTX633677) diluted at 1:2000.

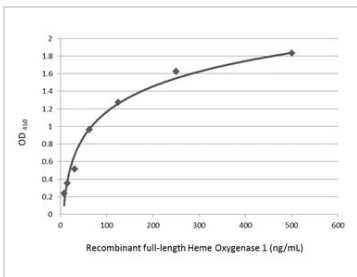
Blue: Hoechst 33342 staining.

Scale bar= 10µm.



GTX633677 WB Image

Untreated (-) and treated (+) HeLa whole cell extracts (30 µg) were separated by 15% SDS-PAGE, and the membrane was blotted with Heme Oxygenase 1 antibody [GT17811] (GTX633677) diluted at 1:1000.



GTX633677 ELISA Image

Sandwich ELISA detection of recombinant full-length Heme Oxygenase 1 protein using GTX633677 as capture antibody at concentration of 5 µg/mL and GTX101147 as detection antibody at concentration of 1 µg/mL. Rabbit IgG antibody (HRP) (GTX213110-01) was diluted at 1:10000 and used to detect the primary antibody.



For full product information, images and publications, please visit our [website](https://www.genetex.com).