

## Paxillin (phospho Tyr118) antibody [GT162]

Cat. No. GTX633678

Host	Mouse
Clonality	Monoclonal
Isotype	IgG2b
Applications	WB, ICC/IF
Reactivity	Human

Package  
100 µl, 25 µl

## Applications

## Application Note

\*Optimal dilutions/concentrations should be determined by the researcher.

Suggested dilution	Recommended dilution
WB	1:500-1:3000
ICC/IF	1:100-1:1000

Not tested in other applications.

Calculated MW 65 kDa. ( [Note](#) )

## Properties

Form	Liquid
Buffer	PBS
Preservative	No preservative
Storage	Store as concentrated solution. Centrifuge briefly prior to opening vial. For short-term storage (1-2 weeks), store at 4°C. For long-term storage, aliquot and store at -20°C or below. Avoid multiple freeze-thaw cycles.
Concentration	0.15 mg/ml (Please refer to the vial label for the specific concentration.)
Immunogen	Carrier-protein conjugated synthetic peptide surrounding phospho Tyr118 of human Paxillin. The exact sequence is proprietary.
Purification	Affinity purified by Protein A.
Conjugation	Unconjugated

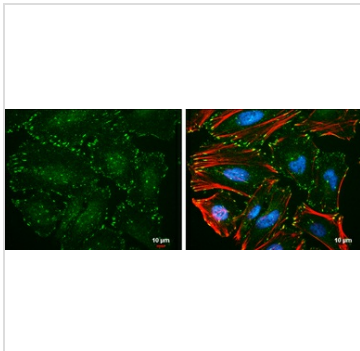
## Note

For laboratory research use only. Not for any clinical, therapeutic, or diagnostic use in humans or animals. Not for animal or human consumption.

Purchasers shall not, and agree not to enable third parties to, analyze, copy, reverse engineer or otherwise attempt to determine the structure or sequence of the product.



For full product information, images and publications, please visit our [website](#).

**DATA IMAGES**

**GTX633678 ICC/IF Image**

Paxillin (phospho Tyr118) antibody [GT162] detects Paxillin (phospho Tyr118) protein at focal adhesion sites by immunofluorescent analysis.

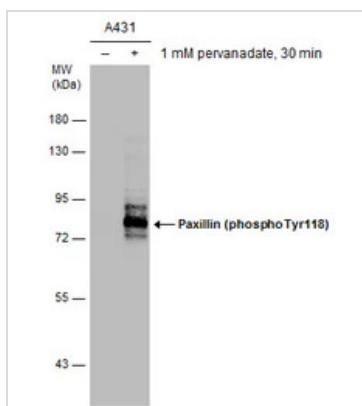
Sample: HeLa cells were fixed in 4% paraformaldehyde at RT for 15 min.

Green: Paxillin (phospho Tyr118) protein stained by Paxillin (phospho Tyr118) antibody [GT162] (GTX633678) diluted at 1:200.

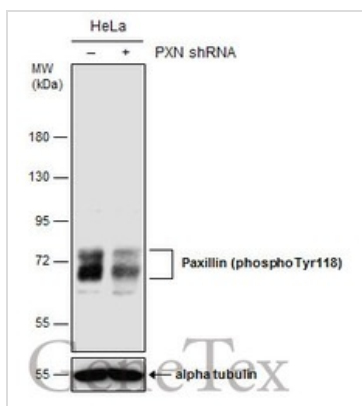
Red: Phalloidin, a cytoskeleton marker, diluted at 1:100.

Blue: Hoechst 33342 staining.

Scale bar = 10  $\mu$ m.


**GTX633678 WB Image**

Untreated (-) and treated (+) A431 whole cell extracts (5  $\mu$ g) were separated by 7.5% SDS-PAGE, and the membrane was blotted with Paxillin (phospho Tyr118) antibody [GT162] (GTX633678) diluted at 1:3000.


**GTX633678 WB Image**

Non-transfected (-) and transfected (+) HeLa whole cell extracts (50  $\mu$ g) were separated by 7.5% SDS-PAGE, and the membrane was blotted with Paxillin (phospho Tyr118) antibody [GT162] (GTX633678) diluted at 1:500.



For full product information, images and publications, please visit our [website](https://www.genetex.com).