

## Cytochrome C antibody [GT577]

Cat. No. GTX633691

Host	Mouse
Clonality	Monoclonal
Isotype	IgA
Applications	WB, IHC-P
Reactivity	Human, Mouse, Rat

References ( 1 )

Package

100 µl, 25 µl

## Applications

## Application Note

\*Optimal dilutions/concentrations should be determined by the researcher.

Suggested dilution	Recommended dilution
WB	1:500-1:3000
IHC-P	1:100-1:1000

Not tested in other applications.

Calculated MW 12 kDa. ( [Note](#) )

## Properties

Form	Liquid
Buffer	PBS
Preservative	No preservatives
Storage	Store as concentrated solution. Centrifuge briefly prior to opening vial. For short-term storage (1-2 weeks), store at 4°C. For long-term storage, aliquot and store at -20°C or below. Avoid multiple freeze-thaw cycles.
Concentration	1 mg/ml (Please refer to the vial label for the specific concentration.)
Immunogen	Full length human Cytochrome C recombinant protein.
Purification	Purified by antigen-affinity chromatography.
Conjugation	Unconjugated

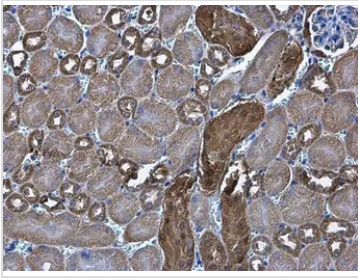
## Note

For laboratory research use only. Not for any clinical, therapeutic, or diagnostic use in humans or animals. Not for animal or human consumption.

Purchasers shall not, and agree not to enable third parties to, analyze, copy, reverse engineer or otherwise attempt to determine the structure or sequence of the product.



For full product information, images and publications, please visit our [website](#).

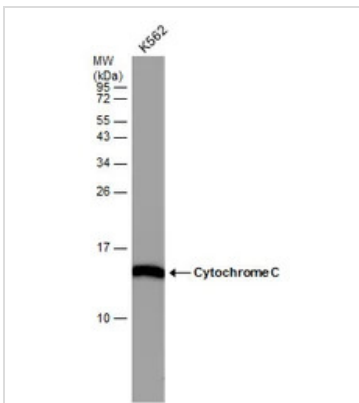
**DATA IMAGES**

**GTX633691 IHC-P Image**

Cytochrome C antibody [GT577] detects Cytochrome C protein at cytoplasm in mouse kidney by immunohistochemical analysis.

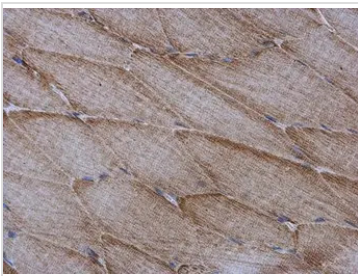
Sample: Paraffin-embedded mouse kidney.

Cytochrome C antibody [GT577] (GTX633691) diluted at 1:200.

Antigen Retrieval: Citrate buffer, pH 6.0, 15 min


**GTX633691 WB Image**

Whole cell extract (30 µg) was separated by 15% SDS-PAGE, and the membrane was blotted with Cytochrome C antibody (GTX633691) diluted at 1:3000.

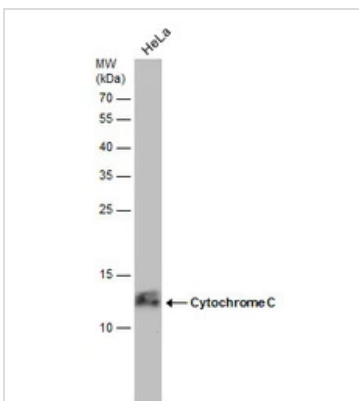

**GTX633691 IHC-P Image**

Cytochrome C antibody [GT577] detects Cytochrome C protein at cytoplasm in rat muscle by immunohistochemical analysis.

Sample: Paraffin-embedded rat muscle.

Cytochrome C antibody [GT577] (GTX633691) diluted at 1:200.

Antigen Retrieval: Citrate buffer, pH 6.0, 15 min


**GTX633691 WB Image**

Whole cell extract (30 µg) was separated by 15% SDS-PAGE, and the membrane was blotted with Cytochrome C antibody [GT577] (GTX633691) diluted at 1:500.



For full product information, images and publications, please visit our [website](https://www.genetex.com).