

# Paxillin (non-phospho Tyr118) antibody [GT722]

**Cat. No. GTX633707**

<b>Host</b>	Mouse
<b>Clonality</b>	Monoclonal
<b>Isotype</b>	IgG1
<b>Applications</b>	WB, ICC/IF
<b>Reactivity</b>	Human, Mouse, Rat

**Package**  
100 µl, 25 µl

## Applications

### Application Note

\*Optimal dilutions/concentrations should be determined by the researcher.

Suggested dilution	Recommended dilution
WB	1:500-1:3000
ICC/IF	1:100-1:1000

Not tested in other applications.

**Calculated MW** 65 kDa. ( [Note](#) )

## Properties

<b>Form</b>	Liquid
<b>Buffer</b>	PBS
<b>Preservative</b>	No preservative
<b>Storage</b>	Store as concentrated solution. Centrifuge briefly prior to opening vial. For short-term storage (1-2 weeks), store at 4°C. For long-term storage, aliquot and store at -20°C or below. Avoid multiple freeze-thaw cycles.
<b>Concentration</b>	1 mg/ml (Please refer to the vial label for the specific concentration.)
<b>Immunogen</b>	Carrier-protein conjugated synthetic peptide corresponding to residues around human Paxillin (non-phospho Tyr118). The exact sequence is proprietary.
<b>Purification</b>	Affinity purified by Protein G.
<b>Conjugation</b>	Unconjugated

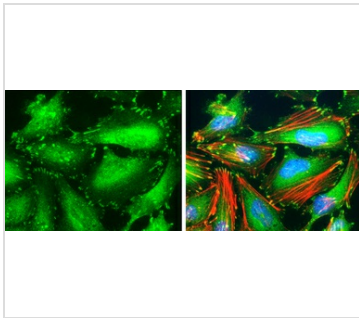
**Note**

For laboratory research use only. Not for any clinical, therapeutic, or diagnostic use in humans or animals. Not for animal or human consumption.

Purchasers shall not, and agree not to enable third parties to, analyze, copy, reverse engineer or otherwise attempt to determine the structure or sequence of the product.



For full product information, images and publications, please visit our [website](#).

**DATA IMAGES**

**GTX633707 ICC/IF Image**

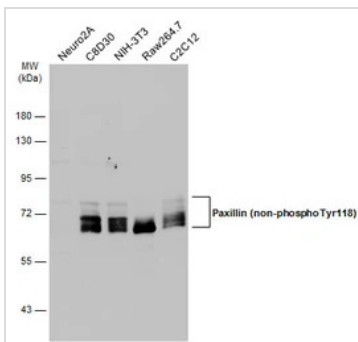
Paxillin (non-phospho Tyr118) antibody [GT722] detects Paxillin (non-phospho Tyr118) protein at focal adhesion by immunofluorescent analysis.

Sample: HeLa cells were fixed in 4% paraformaldehyde at RT for 15 min.

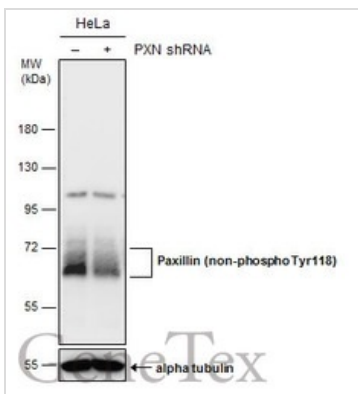
Green: Paxillin (non-phospho Tyr118) stained by Paxillin (non-phospho Tyr118) antibody [GT722] (GTX633707) diluted at 1:1000.

Red: phalloidin, a cytoskeleton marker, diluted at 1:100.

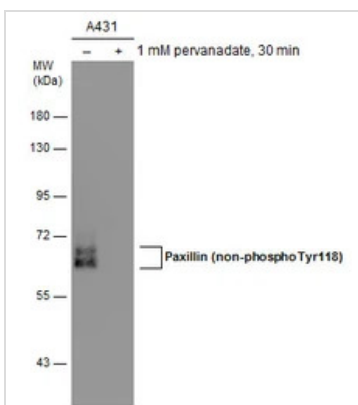
Blue: Hoechst 33342 staining.


**GTX633707 WB Image**

Various whole cell extracts (30 µg) were separated by 7.5% SDS-PAGE, and the membrane was blotted with Paxillin (non-phospho Tyr118) antibody [GT722] (GTX633707) diluted at 1:500. The HRP-conjugated anti-mouse IgG antibody (GTX213111-01) was used to detect the primary antibody.


**GTX633707 WB Image**

Non-transfected (-) and transfected (+) HeLa whole cell extracts (50 µg) were separated by 7.5% SDS-PAGE, and the membrane was blotted with Paxillin (non-phospho Tyr118) antibody [GT722] (GTX633707) diluted at 1:1000.


**GTX633707 WB Image**

Untreated (-) and treated (+) A431 whole cell extracts (5 µg) were separated by 7.5% SDS-PAGE, and the membrane was blotted with Paxillin (non-phospho Tyr118) antibody [GT722] (GTX633707) diluted at 1:3000. The HRP-conjugated anti-mouse IgG antibody (GTX213111-01) was used to detect the primary antibody.



For full product information, images and publications, please visit our [website](https://www.genetex.com).