

Paxillin antibody [GT7612]

Cat. No. GTX633769

Host	Mouse
Clonality	Monoclonal
Isotype	IgG1
Applications	WB, ICC/IF, IHC-P
Reactivity	Human, Mouse, Rat

References (2)

Package

100 µl, 25 µl

Applications

Application Note

*Optimal dilutions/concentrations should be determined by the researcher.

Suggested dilution	Recommended dilution
WB	1:500-1:3000
ICC/IF	1:100-1:1000
IHC-P	1:100-1:1000

Not tested in other applications.

Calculated MW 65 kDa. ([Note](#))

Properties

Form	Liquid
Buffer	PBS
Preservative	No preservative
Storage	Store as concentrated solution. Centrifuge briefly prior to opening vial. For short-term storage (1-2 weeks), store at 4°C. For long-term storage, aliquot and store at -20°C or below. Avoid multiple freeze-thaw cycles.
Concentration	1 mg/ml (Please refer to the vial label for the specific concentration.)
Immunogen	Recombinant protein encompassing a sequence within the center region of human Paxillin. The exact sequence is proprietary.
Purification	Affinity purified by Protein G.
Conjugation	Unconjugated

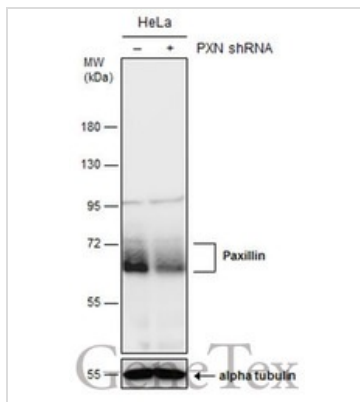
Note

For laboratory research use only. Not for any clinical, therapeutic, or diagnostic use in humans or animals. Not for animal or human consumption.

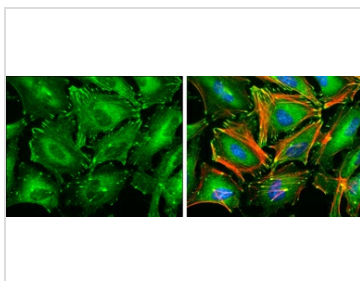
Purchasers shall not, and agree not to enable third parties to, analyze, copy, reverse engineer or otherwise attempt to determine the structure or sequence of the product.



For full product information, images and publications, please visit our [website](#).

DATA IMAGES

GTX633769 WB Image

Non-transfected (–) and transfected (+) HeLa whole cell extracts (50 µg) were separated by 7.5% SDS-PAGE, and the membrane was blotted with Paxillin antibody [GT7612] (GTX633769) diluted at 1:1000.


GTX633769 ICC/IF Image

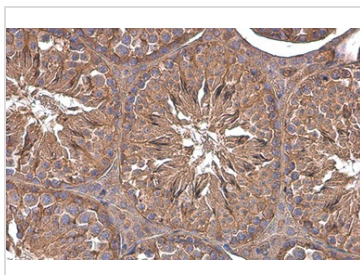
Paxillin antibody [GT7612] detects Paxillin protein at focal adhesion sites by immunofluorescent analysis.

Sample: HeLa cells were fixed in 4% paraformaldehyde at RT for 15 min.

Green: Paxillin protein stained by Paxillin antibody [GT7612] (GTX633769) diluted at 1:500.

Red: Phalloidin, a cytoskeleton marker, diluted at 1:100.

Blue: Hoechst 33342 staining.

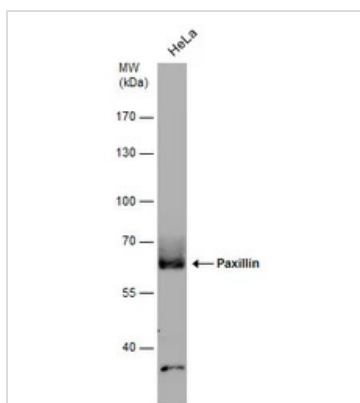

GTX633769 IHC-P Image

Paxillin antibody [GT7612] detects Paxillin protein at cytoplasm by immunohistochemical analysis.

Sample: Paraffin-embedded mouse testis.

Paxillin stained by Paxillin antibody [GT7612] (GTX633769) diluted at 1:200.

Antigen Retrieval: Citrate buffer, pH 6.0, 15 min


GTX633769 WB Image

Whole cell extract (30 µg) was separated by 7.5% SDS-PAGE, and the membrane was blotted with Paxillin antibody [GT7612] (GTX633769) diluted at 1:1000.



For full product information, images and publications, please visit our [website](https://www.genetex.com).