

# Japanese encephalitis virus NS1 antibody [GT481]

**Cat. No. GTX633812**

<b>Host</b>	Mouse
<b>Clonality</b>	Monoclonal
<b>Isotype</b>	IgG2a
<b>Applications</b>	WB, ICC/IF
<b>Reactivity</b>	Japanese encephalitis virus

★★★★★ Review ( 1 )

**Package**  
100 µl, 25 µl

## Applications

### Application Note

\*Optimal dilutions/concentrations should be determined by the researcher.

Suggested dilution	Recommended dilution
WB	1:5000-1:20000
ICC/IF	1:100-1:1000

Not tested in other applications.

## Properties

<b>Form</b>	Liquid
<b>Buffer</b>	PBS
<b>Preservative</b>	No preservatives
<b>Storage</b>	Store as concentrated solution. Centrifuge briefly prior to opening vial. For short-term storage (1-2 weeks), store at 4°C. For long-term storage, aliquot and store at -20°C or below. Avoid multiple freeze-thaw cycles.
<b>Concentration</b>	1 mg/ml (Please refer to the vial label for the specific concentration.)
<b>Immunogen</b>	Recombinant protein encompassing a sequence within the C-terminus region of NS1 (JEV). (Japanese Encephalitis Virus strain Jaoars982) The exact sequence is proprietary.
<b>Purification</b>	Affinity purified by Protein G.
<b>Conjugation</b>	Unconjugated

### Note

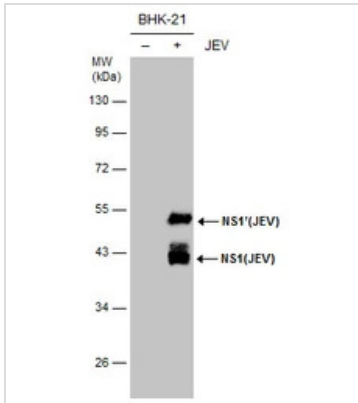
For laboratory research use only. Not for any clinical, therapeutic, or diagnostic use in humans or animals. Not for animal or human consumption.

Purchasers shall not, and agree not to enable third parties to, analyze, copy, reverse engineer or otherwise attempt to determine the structure or sequence of the product.



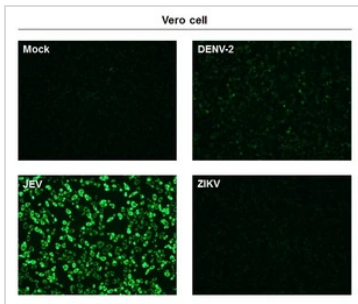
For full product information, images and publications, please visit our [website](#).

## DATA IMAGES



### GTX633812 WB Image

Non-infected (–) and infected (+) BHK-21 whole cell extracts (5 µg) were separated by 10% SDS-PAGE, and the membrane was blotted with TDP43 antibody [GT6310] (GTX633812) diluted at 1:20000.



### GTX633812 ICC/IF Image

Immunofluorescent analysis of non-infected and infected vero cells using NS1 (JEV) antibody [GT481] (GTX633812).

Green: NS1 (JEV) antibody [GT481] (GTX633812) diluted at 1:500.



For full product information, images and publications, please visit our [website](https://www.genetex.com).