

## Japanese encephalitis virus NS1 antibody [GT1410]

Cat. No. GTX633820

<b>Host</b>	Mouse
<b>Clonality</b>	Monoclonal
<b>Isotype</b>	IgG1
<b>Applications</b>	WB, ICC/IF, IHC-P (cell pellet)
<b>Reactivity</b>	Japanese encephalitis virus

References ( 13 )

★★★★★ Review ( 1 )

Package

100 µl, 25 µl

## Applications

## Application Note

\*Optimal dilutions/concentrations should be determined by the researcher.

Suggested dilution	Recommended dilution
WB	1:1000-1:10000
ICC/IF	1:100-1:1000
IHC-P (cell pellet)	Assay dependent

Not tested in other applications.

**Product Note** This antibody was raised against JEV NS1 protein, and it does not cross-react with Zika, DENV-1, DENV-2, DENV-3, and DENV-4 NS1 protein.

## Properties

<b>Form</b>	Liquid
<b>Buffer</b>	PBS, 20% Glycerol
<b>Preservative</b>	No preservatives
<b>Storage</b>	Store as concentrated solution. Centrifuge briefly prior to opening vial. For short-term storage (1-2 weeks), store at 4°C. For long-term storage, aliquot and store at -20°C or below. Avoid multiple freeze-thaw cycles.
<b>Concentration</b>	1 mg/ml (Please refer to the vial label for the specific concentration.)
<b>Immunogen</b>	Recombinant protein encompassing a sequence within the center region of NS1 (JEV). (Japanese Encephalitis Virus strain Jaoars982) The exact sequence is proprietary.
<b>Purification</b>	Affinity purified by Protein G.
<b>Conjugation</b>	Unconjugated



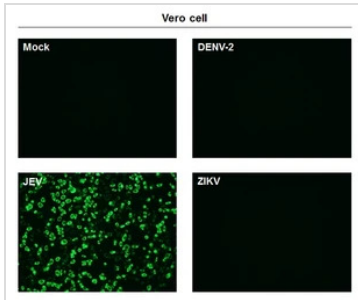
For full product information, images and publications, please visit our [website](#).

Date 2025 / 12 / 12 Page 1 of 2

For laboratory research use only. Not for any clinical, therapeutic, or diagnostic use in humans or animals. Not for animal or human consumption.

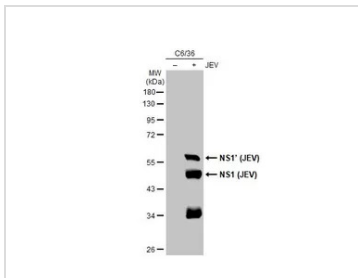
**Note**

Purchasers shall not, and agree not to enable third parties to, analyze, copy, reverse engineer or otherwise attempt to determine the structure or sequence of the product.

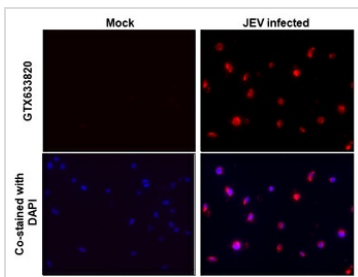
**DATA IMAGES**

**GTX633820 ICC/IF Image**

Immunofluorescent analysis of non-infected and infected vero cells using NS1 (JEV) antibody [GT1410] (GTX633820).

Green: NS1 (JEV) antibody [GT1410] (GTX633820) diluted at 1:500.


**GTX633820 WB Image**

Non-infected (-) and infected (+) C6/36 whole cell extracts (15 µg) were separated by 10% SDS-PAGE, and the membrane was blotted with Japanese encephalitis virus NS1 antibody [GT1410] (GTX633820) diluted at 1:5000. The HRP-conjugated anti-mouse IgG antibody (GTX213111-01) was used to detect the primary antibody.


**GTX633820 IHC-P (cell pellet) Image**

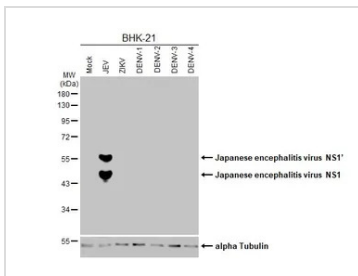
NS1 (JEV) antibody [GT1410] detects NS1 (JEV) protein at cytoplasm by immunohistochemical analysis.

Sample: Paraffin-embedded japanese encephalitis virus BHK-21.

Red: NS1 (JEV) stained by NS1 (JEV) antibody [GT1410] (GTX633820) diluted at 1:500.

Blue: Fluoroshield with DAPI (GTX30920).

Antigen Retrieval: Citrate buffer, pH 6.0, 15 min


**GTX633820 WB Image**

Non-infected and infected BHK-21 whole cell extracts (5 µg) were separated by 10% SDS-PAGE, and the membrane was blotted with Japanese encephalitis virus NS1 antibody [GT1410] (GTX633820) diluted at 1:1000. The HRP-conjugated anti-mouse IgG antibody (GTX213111-01) was used to detect the primary antibody.



For full product information, images and publications, please visit our [website](#).