

## Synaptophysin antibody [GT1825]

Cat. No. GTX633821

Host	Mouse
Clonality	Monoclonal
Isotype	IgG1
Applications	WB, IHC-P, IHC-Fr
Reactivity	Mouse, Rat

References ( 2 )

Package

100 µl, 25 µl

## Applications

## Application Note

\*Optimal dilutions/concentrations should be determined by the researcher.

Suggested dilution	Recommended dilution
WB	1:500-1:3000
IHC-P	1:100-1:1000
IHC-Fr	Assay dependent

Not tested in other applications.

Calculated MW 34 kDa. ( [Note](#) )

## Properties

Form	Liquid
Buffer	PBS
Preservative	No preservatives
Storage	Store as concentrated solution. Centrifuge briefly prior to opening vial. For short-term storage (1-2 weeks), store at 4°C. For long-term storage, aliquot and store at -20°C or below. Avoid multiple freeze-thaw cycles.
Concentration	1 mg/ml (Please refer to the vial label for the specific concentration.)
Immunogen	Recombinant protein encompassing a sequence within the C-terminus region of human Synaptophysin. The exact sequence is proprietary.
Purification	Affinity purified by Protein G.
Conjugation	Unconjugated

## Note

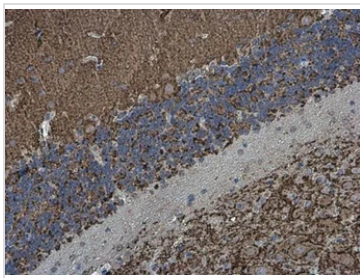
For laboratory research use only. Not for any clinical, therapeutic, or diagnostic use in humans or animals. Not for animal or human consumption.

Purchasers shall not, and agree not to enable third parties to, analyze, copy, reverse engineer or otherwise attempt to determine the structure or sequence of the product.



For full product information, images and publications, please visit our [website](#).

## DATA IMAGES



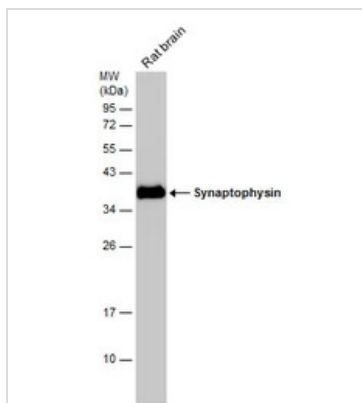
### GTX633821 IHC-P Image

Synaptophysin antibody [GT1825] detects Synaptophysin protein at cell membrane in mouse brain by immunohistochemical analysis.

Sample: Paraffin-embedded mouse brain.

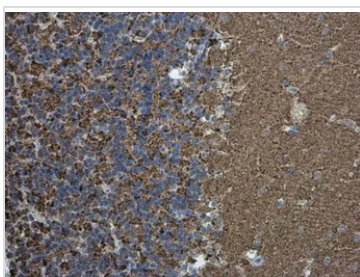
Synaptophysin antibody [GT1825] (GTX633821) diluted at 1:200.

Antigen Retrieval: Citrate buffer, pH 6.0, 15 min



### GTX633821 WB Image

Rat tissue extract (50 µg) was separated by 12% SDS-PAGE, and the membrane was blotted with Synaptophysin antibody (GTX633821) diluted at 1:3000.



### GTX633821 IHC-P Image

Synaptophysin antibody [GT1825] detects Synaptophysin protein at cell membrane in rat brain by immunohistochemical analysis.

Sample: Paraffin-embedded rat brain.

Synaptophysin antibody [GT1825] (GTX633821) diluted at 1:200.

Antigen Retrieval: Citrate buffer, pH 6.0, 15 min



For full product information, images and publications, please visit our [website](https://www.genetex.com).