

## ALDH1A3 antibody [GT926]

Cat. No. GTX633822

Host	Mouse
Clonality	Monoclonal
Isotype	IgG1
Applications	WB, ICC/IF, IHC-P
Reactivity	Human, Mouse, Rat

References ( 2 )

Package

100 µl, 25 µl

## Applications

## Application Note

\*Optimal dilutions/concentrations should be determined by the researcher.

Suggested dilution	Recommended dilution
WB	1:500-1:3000
ICC/IF	1:100-1:1000
IHC-P	1:100-1:1000

Not tested in other applications.

Calculated MW 56 kDa. ( [Note](#) )

## Properties

Form	Liquid
Buffer	PBS
Preservative	No preservative
Storage	Store as concentrated solution. Centrifuge briefly prior to opening vial. For short-term storage (1-2 weeks), store at 4°C. For long-term storage, aliquot and store at -20°C or below. Avoid multiple freeze-thaw cycles.
Concentration	1 mg/ml (Please refer to the vial label for the specific concentration.)
Immunogen	Recombinant protein encompassing a sequence within the center region of human ALDH1A3. The exact sequence is proprietary.
Purification	Affinity purified by Protein G.
Conjugation	Unconjugated

## Note

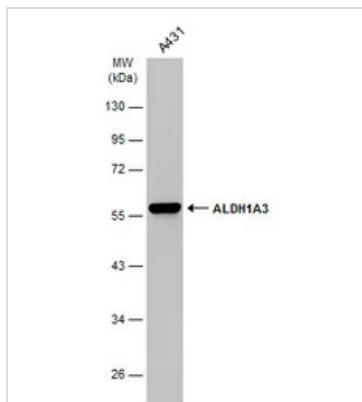
For laboratory research use only. Not for any clinical, therapeutic, or diagnostic use in humans or animals. Not for animal or human consumption.

Purchasers shall not, and agree not to enable third parties to, analyze, copy, reverse engineer or otherwise attempt to determine the structure or sequence of the product.

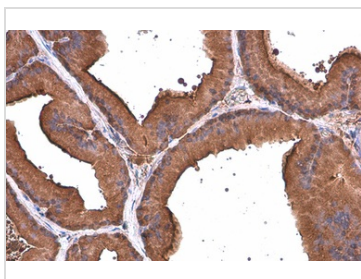


For full product information, images and publications, please visit our [website](#).

## DATA IMAGES

**GTX633822 WB Image**

Whole cell extract (30 µg) was separated by 10% SDS-PAGE, and the membrane was blotted with ALDH1A3 antibody [GT926] (GTX633822) diluted at 1:1000. The HRP-conjugated anti-mouse IgG antibody (GTX213111-01) was used to detect the primary antibody.

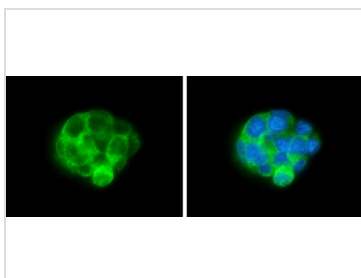
**GTX633822 IHC-P Image**

ALDH1A3 antibody [GT926] detects ALDH1A3 protein at cytoplasm by immunohistochemical analysis.

Sample: Paraffin-embedded rat prostate.

ALDH1A3 stained by ALDH1A3 antibody [GT926] (GTX633822) diluted at 1:200.

Antigen Retrieval: Citrate buffer, pH 6.0, 15 min

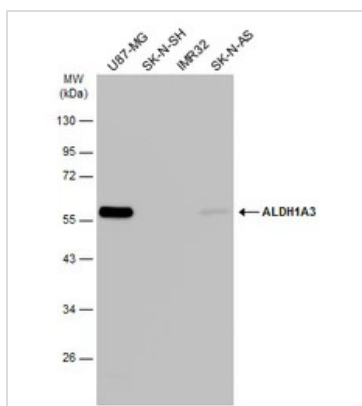
**GTX633822 ICC/IF Image**

ALDH1A3 antibody [GT926] detects ALDH1A3 protein at cytoplasm by immunofluorescent analysis.

Sample: Hep G2 cells were fixed in 4% paraformaldehyde at RT for 15 min.

Green: ALDH1A3 protein stained by ALDH1A3 antibody [GT926] (GTX633822) diluted at 1:500.

Blue: Hoechst 33342 staining.

**GTX633822 WB Image**

Various whole cell extracts (30 µg) were separated by 10% SDS-PAGE, and the membrane was blotted with ALDH1A3 antibody [GT926] (GTX633822) diluted at 1:1000. The HRP-conjugated anti-mouse IgG antibody (GTX213111-01) was used to detect the primary antibody.



For full product information, images and publications, please visit our [website](https://www.genetex.com).