

Histone H2B antibody [GT387]

Cat. No. GTX633909

Host	Mouse
Clonality	Monoclonal
Isotype	IgG2b
Application	WB
Reactivity	Human

Package
100 µl, 25 µl

APPLICATION

Application Note

*Optimal dilutions/concentrations should be determined by the researcher.

Suggested dilution	Recommended dilution
WB	1:5000-1:20000

Not tested in other applications.

PROPERTIES

Form	Liquid
Buffer	PBS
Preservative	No preservative
Storage	Store as concentrated solution. Centrifuge briefly prior to opening vial. For short-term storage (1-2 weeks), store at 4°C. For long-term storage, aliquot and store at -20°C or below. Avoid multiple freeze-thaw cycles.
Concentration	1 mg/ml (Please refer to the vial label for the specific concentration.)
Immunogen	Full length human Histone H2B recombinant protein.
Purification	Affinity purified by Protein A.
Conjugation	Unconjugated

Note

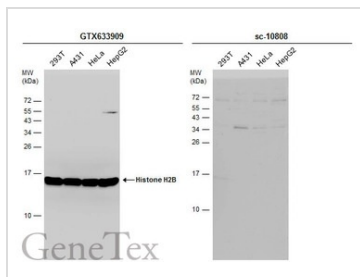
For laboratory research use only. Not for any clinical, therapeutic, or diagnostic use in humans or animals. Not for animal or human consumption.

Purchasers shall not, and agree not to enable third parties to, analyze, copy, reverse engineer or otherwise attempt to determine the structure or sequence of the product.



For full product information, images and publications, please visit our [website](#).

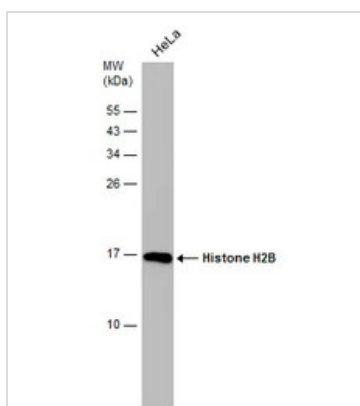
DATA IMAGES



GTX633909 WB Image

Various whole cell extracts (30 µg) were separated by 15% SDS-PAGE, and the membranes were blotted with Histone H2B antibody [GT387] (GTX633909) diluted at 1:10000 and competitor's antibody (sc-10808) diluted at 1:100. The HRP-conjugated anti-mouse IgG antibody (GTX213111-01) was used to detect the primary antibody.

*The competitor is not affiliated with GeneTex and does not endorse this product.



GTX633909 WB Image

Whole cell extract (10 µg) was separated by 15% SDS-PAGE, and the membrane was blotted with Histone H2B antibody [GT387] (GTX633909) diluted at 1:10000.



For full product information, images and publications, please visit our [website](https://www.genetex.com).