

MYH9 (phospho Ser1943) antibody [GT144]

Cat. No. GTX633955

Host	Mouse
Clonality	Monoclonal
Isotype	IgG1
Applications	WB, ICC/IF, IHC-P
Reactivity	Human, Mouse

★★★★★ Review (1)

Package
100 µl, 25 µl

Applications

Application Note

*Optimal dilutions/concentrations should be determined by the researcher.

Suggested dilution	Recommended dilution
WB	1:5000-1:20000
ICC/IF	1:100-1:1000
IHC-P	1:100-1:1000

Not tested in other applications.

Calculated MW 227 kDa. ([Note](#))

Properties

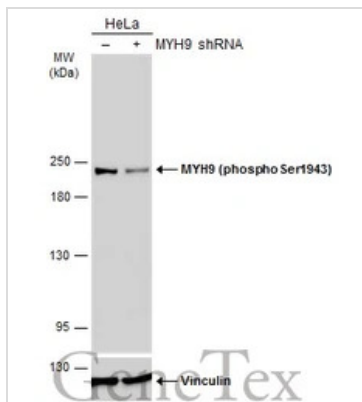
Form	Liquid
Buffer	PBS
Preservative	No preservatives
Storage	Store as concentrated solution. Centrifuge briefly prior to opening vial. For short-term storage (1-2 weeks), store at 4°C. For long-term storage, aliquot and store at -20°C or below. Avoid multiple freeze-thaw cycles.
Concentration	1 mg/ml (Please refer to the vial label for the specific concentration.)
Immunogen	Carrier-protein conjugated synthetic peptide surrounding phospho Ser1943 of human MYH9. The exact sequence is proprietary.
Purification	Affinity purified by Protein G.
Conjugation	Unconjugated

Note

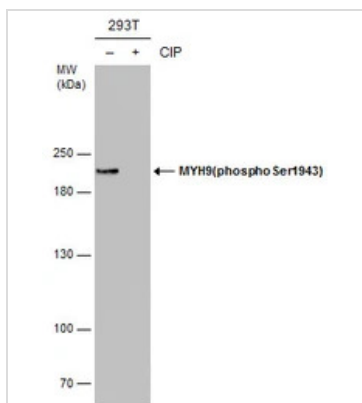
For laboratory research use only. Not for any clinical, therapeutic, or diagnostic use in humans or animals. Not for animal or human consumption.

Purchasers shall not, and agree not to enable third parties to, analyze, copy, reverse engineer or otherwise attempt to determine the structure or sequence of the product.

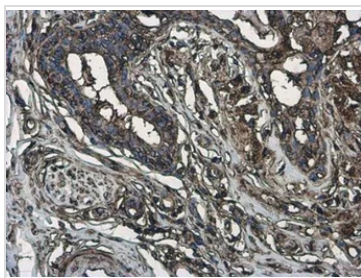
For full product information, images and publications, please visit our [website](#).

DATA IMAGES

GTX633955 WB Image

Non-transfected (–) and transfected (+) HeLa whole cell extracts (30 µg) were separated by 5% SDS-PAGE, and the membrane was blotted with MYH9 (phospho Ser1943) antibody [GT144] (GTX633955) diluted at 1:10000. The HRP-conjugated anti-mouse IgG antibody (GTX213111-01) was used to detect the primary antibody.


GTX633955 WB Image

Untreated (–) and treated (+) 293T whole cell extracts (30 µg) were separated by 5% SDS-PAGE, and the membrane was blotted with MYH9 (phospho Ser1943) antibody [GT144] (GTX633955) diluted at 1:10000.

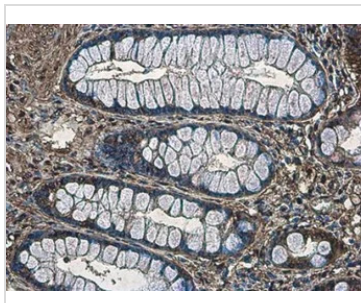

GTX633955 IHC-P Image

MYH9 (phospho Ser1943) antibody [GT144] detects MYH9 (phospho Ser1943) protein at cytoplasm in human mammary gland by immunohistochemical analysis.

Sample: Paraffin-embedded human mammary gland.

MYH9 (phospho Ser1943) antibody [GT144] (GTX633955) diluted at 1:200.

Antigen Retrieval: Citrate buffer, pH 6.0, 15 min


GTX633955 IHC-P Image

MYH9 (phospho Ser1943) antibody [GT144] detects MYH9 (phospho Ser1943) protein at cytoplasm in human colon by immunohistochemical analysis.

Sample: Paraffin-embedded human colon.

MYH9 (phospho Ser1943) antibody [GT144] (GTX633955) diluted at 1:200.

Antigen Retrieval: Citrate buffer, pH 6.0, 15 min



For full product information, images and publications, please visit our [website](https://www.genetex.com).