

Synaptophysin antibody [GT2589]

Cat. No. GTX633972

Host	Mouse
Clonality	Monoclonal
Isotype	IgG2b
Applications	WB, ICC/IF, IHC-P, IHC-Fr
Reactivity	Human, Mouse, Rat

★★★★★ Review (1)

Package
100 µl, 25 µl

Applications

Application Note

*Optimal dilutions/concentrations should be determined by the researcher.

Suggested dilution	Recommended dilution
WB	1:5000-1:20000
ICC/IF	1:100-1:1000
IHC-P	1:100-1:1000
IHC-Fr	Assay dependent

Not tested in other applications.

Observed MW (kDa) 40 kDa.

Properties

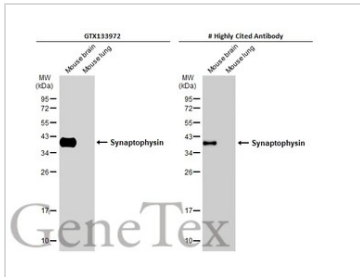
Form	Liquid
Buffer	PBS
Preservative	No preservatives
Storage	Store as concentrated solution. Centrifuge briefly prior to opening vial. For short-term storage (1-2 weeks), store at 4°C. For long-term storage, aliquot and store at -20°C or below. Avoid multiple freeze-thaw cycles.
Concentration	1 mg/ml (Please refer to the vial label for the specific concentration.)
Immunogen	Recombinant protein encompassing a sequence within the C-terminus region of human Synaptophysin. The exact sequence is proprietary.
Purification	Affinity purified by Protein A.
Conjugation	Unconjugated

For full product information, images and publications, please visit our [website](#).

For laboratory research use only. Not for any clinical, therapeutic, or diagnostic use in humans or animals. Not for animal or human consumption.

Note
Purchasers shall not, and agree not to enable third parties to, analyze, copy, reverse engineer or otherwise attempt to determine the structure or sequence of the product.

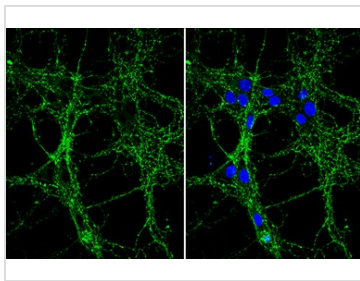
DATA IMAGES



GTX633972 WB Image

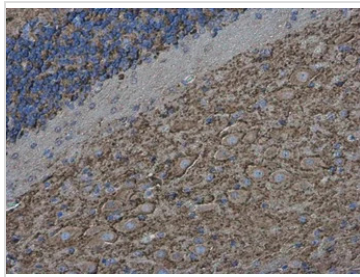
Various tissue extracts (50 µg) were separated by 12% SDS-PAGE, and the membrane was blotted with Synaptophysin antibody [GT2589] (GTX633972) diluted at 1:10000. The HRP-conjugated anti-mouse IgG antibody (GTX213111-01) was used to detect the primary antibody.

*The competitor is not affiliated with GeneTex and does not endorse this product.



GTX633972 ICC/IF Image

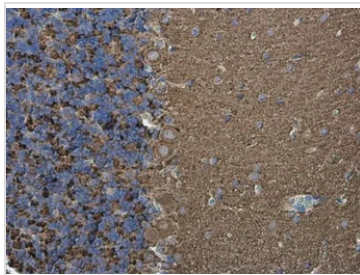
Synaptophysin antibody [GT2589] detects Synaptophysin protein by immunofluorescent analysis. Sample: DIV9 rat E18 primary hippocampal neuron cells were fixed in 4% paraformaldehyde at RT for 15 min. Green: Synaptophysin stained by Synaptophysin antibody [GT2589] (GTX633972) diluted at 1:500. Blue: Fluoroshield with DAPI (GTX30920).



GTX633972 IHC-P Image

Synaptophysin antibody [GT2589] detects Synaptophysin protein at cell membrane in mouse brain by immunohistochemical analysis. Sample: Paraffin-embedded mouse brain. Synaptophysin antibody [GT2589] (GTX633972) diluted at 1:200.

Antigen Retrieval: Citrate buffer, pH 6.0, 15 min



GTX633972 IHC-P Image

Synaptophysin antibody [GT2589] detects Synaptophysin protein at cell membrane in rat brain by immunohistochemical analysis. Sample: Paraffin-embedded rat brain. Synaptophysin antibody [GT2589] (GTX633972) diluted at 1:200.

Antigen Retrieval: Citrate buffer, pH 6.0, 15 min



For full product information, images and publications, please visit our [website](#).