

TDP43 antibody [GT6310]

Cat. No. GTX633973

Host	Mouse
Clonality	Monoclonal
Isotype	IgG2a
Applications	WB, IHC-P, IHC-Fr
Reactivity	Human, Mouse, Rat

Package
100 µl, 25 µl

Applications

Application Note

*Optimal dilutions/concentrations should be determined by the researcher.

Suggested dilution	Recommended dilution
WB	1:1000-1:10000
IHC-P	1:100-1:1000
IHC-Fr	1:100-1:1000

Not tested in other applications.

Calculated MW 45 kDa. ([Note](#))

Properties

Form	Liquid
Buffer	PBS, 20% Glycerol
Preservative	No preservatives
Storage	Store as concentrated solution. Centrifuge briefly prior to opening vial. For short-term storage (1-2 weeks), store at 4°C. For long-term storage, aliquot and store at -20°C or below. Avoid multiple freeze-thaw cycles.
Concentration	1 mg/ml (Please refer to the vial label for the specific concentration.)
Immunogen	Recombinant protein encompassing a sequence within the center region of human TDP43. The exact sequence is proprietary.
Purification	Affinity purified by Protein A.
Conjugation	Unconjugated

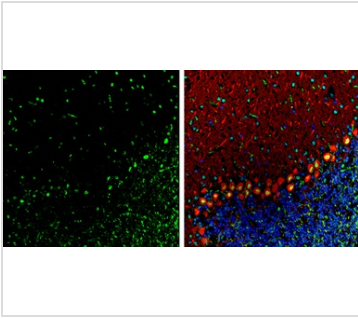
Note

For laboratory research use only. Not for any clinical, therapeutic, or diagnostic use in humans or animals. Not for animal or human consumption.

Purchasers shall not, and agree not to enable third parties to, analyze, copy, reverse engineer or otherwise attempt to determine the structure or sequence of the product.



For full product information, images and publications, please visit our [website](#).

DATA IMAGES

GTX633973 IHC-Fr Image

TDP43 antibody [GT6310] detects TDP43 Protein expression by immunohistochemical analysis.

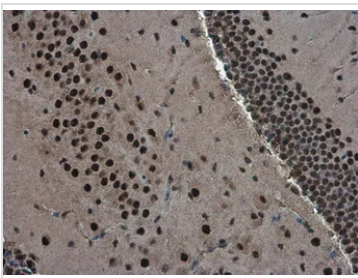
Sample: Frozen-sectioned adult mouse cerebellum.

Green: TDP43 stained by TDP43 antibody [GT6310] (GTX633973) diluted at 1:250.

Red: Calbindin, stained by Calbindin antibody (GTX130856) diluted at 1:500.

Blue: Fluoroshield with DAPI (GTX30920).

Antigen Retrieval: Citrate buffer, pH 6.0, 5 min

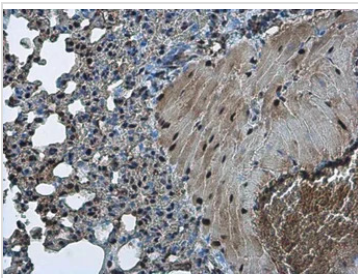

GTX633973 IHC-P Image

TDP43 antibody [GT6310] detects TDP43 protein at nucleus in mouse brain by immunohistochemical analysis.

Sample: Paraffin-embedded mouse brain.

TDP43 antibody [GT6310] (GTX633973) diluted at 1:200.

Antigen Retrieval: Citrate buffer, pH 6.0, 15 min

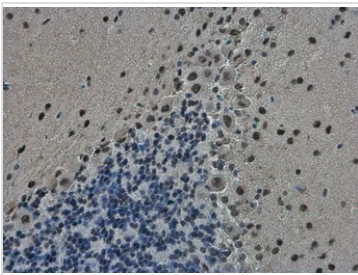

GTX633973 IHC-P Image

TDP43 antibody [GT6310] detects TDP43 protein at nucleus in mouse lung by immunohistochemical analysis.

Sample: Paraffin-embedded mouse lung.

TDP43 antibody [GT6310] (GTX633973) diluted at 1:200.

Antigen Retrieval: Citrate buffer, pH 6.0, 15 min

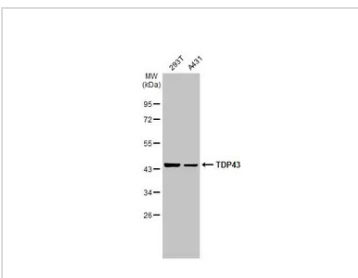

GTX633973 IHC-P Image

TDP43 antibody [GT6310] detects TDP43 protein at nucleus in rat brain by immunohistochemical analysis.

Sample: Paraffin-embedded rat brain.

TDP43 antibody [GT6310] (GTX633973) diluted at 1:200.

Antigen Retrieval: Citrate buffer, pH 6.0, 15 min


GTX633973 WB Image

Various whole cell extracts (30 µg) were separated by 10% SDS-PAGE, and the membrane was blotted with TDP43 antibody [GT6310] (GTX633973) diluted at 1:5000. The HRP-conjugated anti-mouse IgG antibody (GTX213111-01) was used to detect the primary antibody.



For full product information, images and publications, please visit our [website](https://www.genetex.com).