

## Zika virus Envelope protein antibody [GT363]

**Cat. No. GTX634155**

<b>Host</b>	Mouse
<b>Clonality</b>	Monoclonal
<b>Isotype</b>	IgG2b
<b>Applications</b>	WB, ICC/IF, ELISA, IHC, Sandwich ELISA
<b>Reactivity</b>	Zika virus

References ( 7 )

★★★★★ Review ( 3 )

Package

100 µl, 25 µl

## Applications

**Application Note**

\*Optimal dilutions/concentrations should be determined by the researcher.

Suggested dilution	Recommended dilution
WB	1:50-1:3000
ICC/IF	1:100-1:1000
ELISA	1:1000-1:10000
IHC	Assay dependent
Sandwich ELISA	Assay dependent

**Note : Capture : GTX634155 / GTX133326, Detection : GTX133326 / GTX634155 / GTX133325**

Not tested in other applications.

## Properties

<b>Form</b>	Liquid
<b>Buffer</b>	PBS
<b>Preservative</b>	No preservative
<b>Storage</b>	Store as concentrated solution. Centrifuge briefly prior to opening vial. For short-term storage (1-2 weeks), store at 4°C. For long-term storage, aliquot and store at -20°C or below. Avoid multiple freeze-thaw cycles.
<b>Concentration</b>	1 mg/ml (Please refer to the vial label for the specific concentration.)
<b>Immunogen</b>	Carrier-protein conjugated synthetic peptide encompassing a sequence within the center region of Zika virus Envelope protein (Zika virus (strain H/PF/2013)). The exact sequence is proprietary.
<b>Purification</b>	Affinity purified by Protein A.
<b>Conjugation</b>	Unconjugated



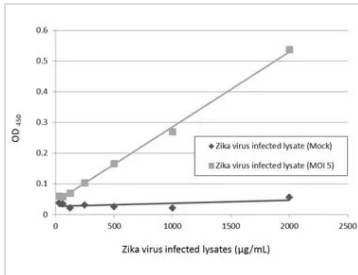
For full product information, images and publications, please visit our [website](#).

For laboratory research use only. Not for any clinical, therapeutic, or diagnostic use in humans or animals. Not for animal or human consumption.

#### Note

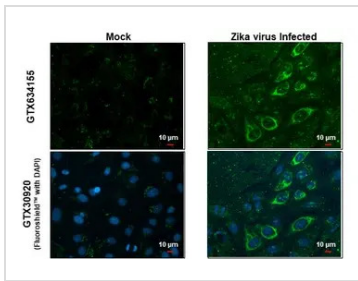
Purchasers shall not, and agree not to enable third parties to, analyze, copy, reverse engineer or otherwise attempt to determine the structure or sequence of the product.

#### DATA IMAGES



#### GTX634155 ELISA Image

Sandwich ELISA detection of Zika virus-infected lysate using GTX634155 as capture antibody at concentration of 5 µg/mL and GTX133326 as detection antibody at concentration of 1 µg/mL. Rabbit IgG antibody (HRP) (GTX213110-01) was diluted at 1:10000 and used to detect the primary antibody.

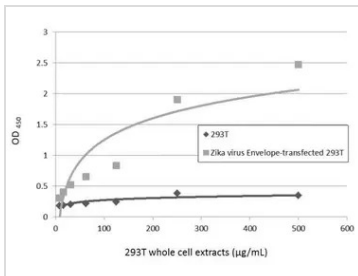


#### GTX634155 ICC/IF Image

Immunofluorescent analysis of arboviruses infected cells using Zika virus Envelope protein antibody [GT363] (GTX634155).

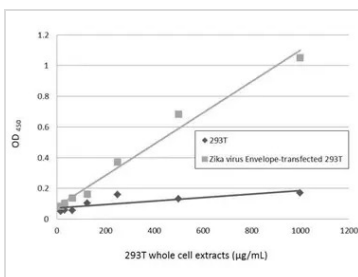
Sample: Mock and zika virus-infected cells.

Green: Zika virus Envelope protein antibody [GT363] (GTX634155) diluted at 1:100.



#### GTX634155 ELISA Image

Sandwich ELISA detection of non-transfected and transfected 293T whole cell extracts using GTX634155 as capture antibody at concentration of 5 µg/mL and GTX133326 as detection antibody at concentration of 1 µg/mL. Rabbit IgG antibody (HRP) (GTX213110-01) was diluted at 1:10000 and used to detect the primary antibody.



#### GTX634155 ELISA Image

Sandwich ELISA detection of non-transfected and transfected 293T whole cell extracts using GTX133326 as capture antibody at concentration of 5 µg/mL and GTX634155 as detection antibody at concentration of 1 µg/mL. Mouse IgG antibody (HRP) (GTX213111-01) was diluted at 1:10000 and used to detect the primary antibody.



For full product information, images and publications, please visit our [website](https://www.genetex.com).