

## PYK2 antibody [GT858]

**Cat. No. GTX634162**

<b>Host</b>	Mouse
<b>Clonality</b>	Monoclonal
<b>Isotype</b>	IgG2a
<b>Application</b>	WB, IHC-P
<b>Reactivity</b>	Human, Mouse, Rat

**Package**  
100 µl, 25 µl

### APPLICATION

#### Application Note

\*Optimal dilutions/concentrations should be determined by the researcher.

Suggested dilution	Recommended dilution
WB	1:1000-1:10000
IHC-P	1:100-1:1000

Not tested in other applications.

**Calculated MW** 116 kDa. ([Note](#))

### PROPERTIES

<b>Form</b>	Liquid
<b>Buffer</b>	PBS
<b>Preservative</b>	No preservative
<b>Storage</b>	Store as concentrated solution. Centrifuge briefly prior to opening vial. For short-term storage (1-2 weeks), store at 4°C. For long-term storage, aliquot and store at -20°C or below. Avoid multiple freeze-thaw cycles.
<b>Concentration</b>	1 mg/ml (Please refer to the vial label for the specific concentration.)
<b>Immunogen</b>	Recombinant protein encompassing a sequence within the center region of human PYK2. The exact sequence is proprietary.
<b>Purification</b>	Affinity purified by Protein A.
<b>Conjugation</b>	Unconjugated

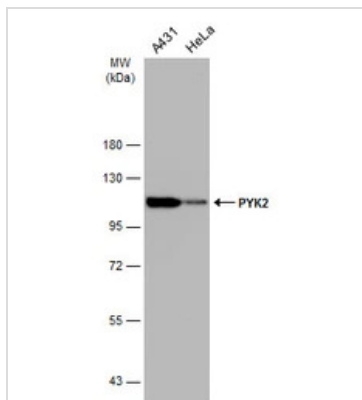
#### Note

For laboratory research use only. Not for any clinical, therapeutic, or diagnostic use in humans or animals. Not for animal or human consumption.

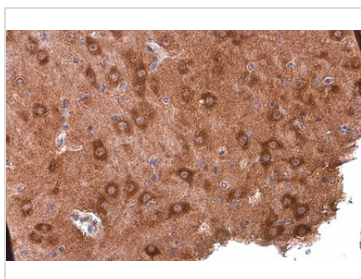
Purchasers shall not, and agree not to enable third parties to, analyze, copy, reverse engineer or otherwise attempt to determine the structure or sequence of the product.



For full product information, images and publications, please visit our [website](#).

**DATA IMAGES**

**GTX634162 WB Image**

Various whole cell extracts (30 µg) were separated by 7.5% SDS-PAGE, and the membrane was blotted with PYK2 antibody [GT858] (GTX634162) diluted at 1:5000. The HRP-conjugated anti-mouse IgG antibody (GTX213111-01) was used to detect the primary antibody.

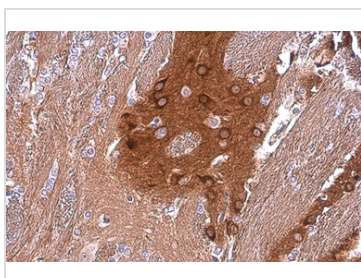

**GTX634162 IHC-P Image**

PYK2 antibody [GT858] detects PYK2 protein at cytoplasm by immunohistochemical analysis.

Sample: Paraffin-embedded mouse brain.

PYK2 stained by PYK2 antibody [GT858] (GTX634162) diluted at 1:200.

Antigen Retrieval: Citrate buffer, pH 6.0, 15 min

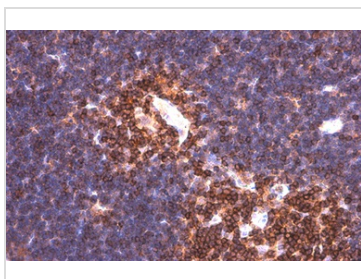

**GTX634162 IHC-P Image**

PYK2 antibody [GT858] detects PYK2 protein at cytoplasm by immunohistochemical analysis.

Sample: Paraffin-embedded rat brain.

PYK2 stained by PYK2 antibody [GT858] (GTX634162) diluted at 1:200.

Antigen Retrieval: Citrate buffer, pH 6.0, 15 min


**GTX634162 IHC-P Image**

PYK2 antibody [GT858] detects PYK2 protein at cytoplasm by immunohistochemical analysis.

Sample: Paraffin-embedded rat thymus gland.

PYK2 stained by PYK2 antibody [GT858] (GTX634162) diluted at 1:200.

Antigen Retrieval: Citrate buffer, pH 6.0, 15 min



For full product information, images and publications, please visit our [website](https://www.genetex.com).