

Anterior Gradient 2 antibody [GT5812]

Cat. No. GTX634163

Host	Mouse
Clonality	Monoclonal
Isotype	IgG2b
Applications	WB, ICC/IF, IHC-P
Reactivity	Human

References (1)

Package

100 µl, 25 µl

PRODUCT

Summary

Anterior gradient 2 (AGR2), also known as hAG-2 and Gob-4, is a member of the disulfide isomerase family of endoplasmic reticulum proteins with a predicted molecular weight of 20 kDa. AGR2 is overexpressed in human mucinous ovarian tumor tissues and in patient sera with early stage mucinous ovarian tumors. It was found to enhance tumor growth and metastasis, and is a potential tumor marker for detection of circulating tumor cells.

Applications

Application Note

*Optimal dilutions/concentrations should be determined by the researcher.

Suggested dilution	Recommended dilution
WB	1:1000-1:10000
ICC/IF	1:100-1:1000
IHC-P	1:100-1:1000

Not tested in other applications.

Calculated MW 20 kDa. ([Note](#))

Properties

Form	Liquid
Buffer	PBS
Preservative	No preservative
Storage	Store as concentrated solution. Centrifuge briefly prior to opening vial. For short-term storage (1-2 weeks), store at 4°C. For long-term storage, aliquot and store at -20°C or below. Avoid multiple freeze-thaw cycles.
Concentration	1 mg/ml (Please refer to the vial label for the specific concentration.)
Immunogen	Recombinant protein encompassing a sequence within the center region of human Anterior Gradient 2. The exact sequence is proprietary.
Purification	Affinity purified by Protein A.
Conjugation	Unconjugated



For full product information, images and publications, please visit our [website](#).

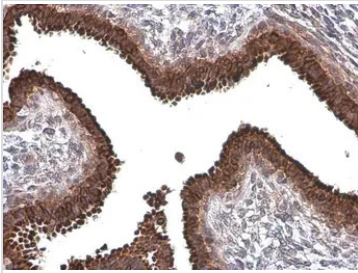
Date 2025 / 07 / 16 Page 1 of 2

For laboratory research use only. Not for any clinical, therapeutic, or diagnostic use in humans or animals. Not for animal or human consumption.

Note

Purchasers shall not, and agree not to enable third parties to, analyze, copy, reverse engineer or otherwise attempt to determine the structure or sequence of the product.

DATA IMAGES



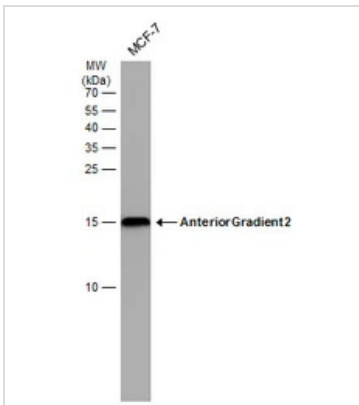
GTX634163 IHC-P Image

Anterior Gradient 2 antibody [GT5812] detects secreted Anterior Gradient 2 protein by immunohistochemical analysis.

Sample: Paraffin-embedded human breast carcinoma.

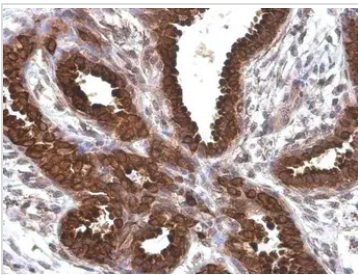
Anterior Gradient 2 stained by Anterior Gradient 2 antibody [GT5812] (GTX634163) diluted at 1:200.

Antigen Retrieval: Citrate buffer, pH 6.0, 15 min



GTX634163 WB Image

Whole cell extract (30 µg) was separated by 15% SDS-PAGE, and the membrane was blotted with Anterior Gradient 2 antibody [GT5812] (GTX634163) diluted at 1:5000. The HRP-conjugated anti-mouse IgG antibody (GTX213111-01) was used to detect the primary antibody.



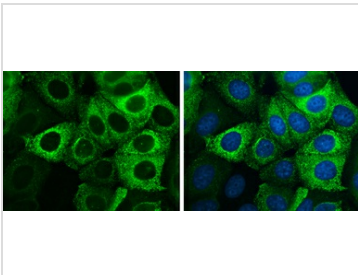
GTX634163 IHC-P Image

Anterior Gradient 2 antibody [GT5812] detects secreted Anterior Gradient 2 protein by immunohistochemical analysis.

Sample: Paraffin-embedded human breast carcinoma.

Anterior Gradient 2 stained by Anterior Gradient 2 antibody [GT5812] (GTX634163) diluted at 1:200.

Antigen Retrieval: Citrate buffer, pH 6.0, 15 min



GTX634163 ICC/IF Image

Anterior Gradient 2 antibody [GT5812] detects Anterior Gradient 2 protein at endoplasmic reticulum by immunofluorescent analysis.

Sample: MCF-7 cells were fixed in 4% paraformaldehyde at RT for 15 min.

Green: Anterior Gradient 2 stained by Anterior Gradient 2 antibody [GT5812] (GTX634163) diluted at 1:500.

Blue: Hoechst 33342 staining.



For full product information, images and publications, please visit our [website](https://www.genetex.com).