

## p53 (phospho Ser46) antibody [GT1018]

Cat. No. GTX634168

Host	Mouse
Clonality	Monoclonal
Isotype	IgG2a
Applications	WB, ICC/IF, IHC-P
Reactivity	Human

References ( 1 )

Package

100 µl, 25 µl

## Applications

## Application Note

\*Optimal dilutions/concentrations should be determined by the researcher.

Suggested dilution	Recommended dilution
WB	1:500-1:3000
ICC/IF	1:100-1:1000
IHC-P	1:100-1:1000

Not tested in other applications.

Calculated MW 44 kDa. ( [Note](#) )

## Properties

Form	Liquid
Buffer	PBS
Preservative	No preservative
Storage	Store as concentrated solution. Centrifuge briefly prior to opening vial. For short-term storage (1-2 weeks), store at 4°C. For long-term storage, aliquot and store at -20°C or below. Avoid multiple freeze-thaw cycles.
Concentration	1 mg/ml (Please refer to the vial label for the specific concentration.)
Immunogen	Carrier-protein conjugated synthetic peptide surrounding phospho Ser46 of human p53. The exact sequence is proprietary.
Purification	Affinity purified by Protein A.
Conjugation	Unconjugated

## Note

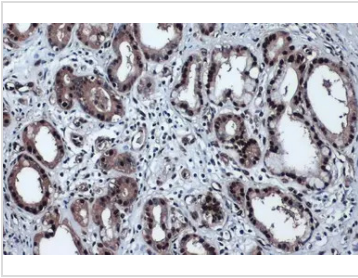
For laboratory research use only. Not for any clinical, therapeutic, or diagnostic use in humans or animals. Not for animal or human consumption.

Purchasers shall not, and agree not to enable third parties to, analyze, copy, reverse engineer or otherwise attempt to determine the structure or sequence of the product.



For full product information, images and publications, please visit our [website](#).

DATA IMAGES



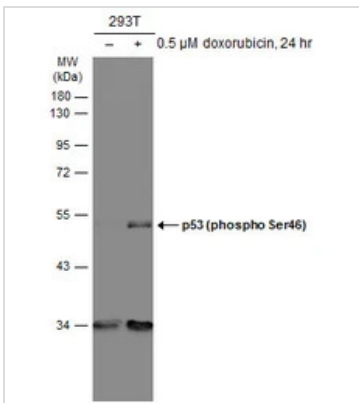
**GTX634168 IHC-P Image**

p53 (phospho Ser46) antibody [GT1018] detects p53 (phospho Ser46) protein at cytoplasm and nucleus by immunohistochemical analysis.

Sample: Paraffin-embedded human pancreatic cancer.

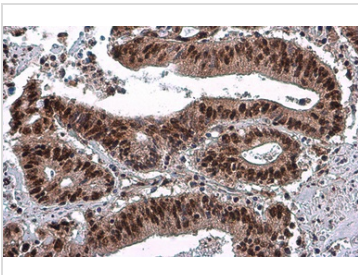
p53 (phospho Ser46) stained by p53 (phospho Ser46) antibody [GT1018] (GTX634168) diluted at 1:200.

Antigen Retrieval: Citrate buffer, pH 6.0, 15 min



**GTX634168 WB Image**

Untreated (-) and treated (+) 293T whole cell extracts (30 μg) were separated by 10% SDS-PAGE, and the membrane was blotted with p53 (phospho Ser46) antibody [GT1018] (GTX634168) diluted at 1:1000. The HRP-conjugated anti-mouse IgG antibody (GTX213111-01) was used to detect the primary antibody.



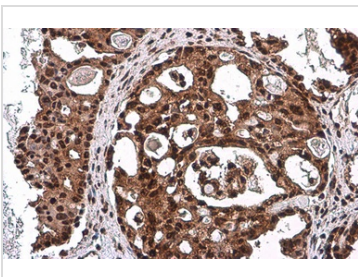
**GTX634168 IHC-P Image**

p53 (phospho Ser46) antibody [GT1018] detects p53 (phospho Ser46) protein at cytoplasm and nucleus by immunohistochemical analysis.

Sample: Paraffin-embedded human colon cancer.

p53 (phospho Ser46) stained by p53 (phospho Ser46) antibody [GT1018] (GTX634168) diluted at 1:200.

Antigen Retrieval: Citrate buffer, pH 6.0, 15 min



**GTX634168 IHC-P Image**

p53 (phospho Ser46) antibody [GT1018] detects p53 (phospho Ser46) protein at cytoplasm and nucleus by immunohistochemical analysis.

Sample: Paraffin-embedded human ovarian cancer.

p53 (phospho Ser46) stained by p53 (phospho Ser46) antibody [GT1018] (GTX634168) diluted at 1:200.

Antigen Retrieval: Citrate buffer, pH 6.0, 15 min



For full product information, images and publications, please visit our [website](https://www.genetex.com).