

EEA1 antibody [GT10811]

Cat. No. GTX634169

Host	Mouse
Clonality	Monoclonal
Isotype	IgG1
Applications	WB, ICC/IF, IHC-P
Reactivity	Human, Mouse, Rat

References (2)

Package

100 µl, 25 µl

Applications

Application Note

*Optimal dilutions/concentrations should be determined by the researcher.

Suggested dilution	Recommended dilution
WB	1:1000-1:10000
ICC/IF	1:100-1:1000
IHC-P	1:100-1:1000

Not tested in other applications.

Calculated MW 162 kDa. ([Note](#))

Properties

Form	Liquid
Buffer	PBS
Preservative	No preservatives
Storage	Store as concentrated solution. Centrifuge briefly prior to opening vial. For short-term storage (1-2 weeks), store at 4°C. For long-term storage, aliquot and store at -20°C or below. Avoid multiple freeze-thaw cycles.
Concentration	1 mg/ml (Please refer to the vial label for the specific concentration.)
Immunogen	Carrier-protein conjugated synthetic peptide encompassing a sequence within the C-terminus region of human EEA1. The exact sequence is proprietary.
Purification	Affinity purified by Protein G.
Conjugation	Unconjugated

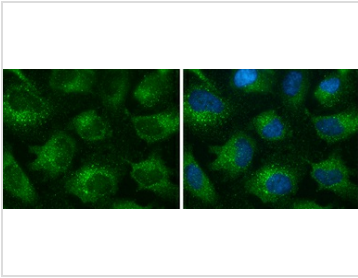
Note

For laboratory research use only. Not for any clinical, therapeutic, or diagnostic use in humans or animals. Not for animal or human consumption.

Purchasers shall not, and agree not to enable third parties to, analyze, copy, reverse engineer or otherwise attempt to determine the structure or sequence of the product.



For full product information, images and publications, please visit our [website](#).

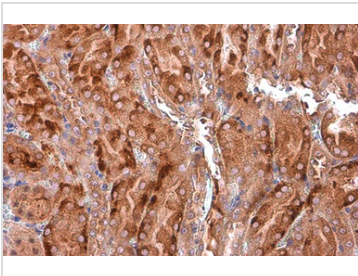
DATA IMAGES

GTX634169 ICC/IF Image

EEA1 antibody [GT10811] detects EEA1 protein at cytoplasm by immunofluorescent analysis.

Sample: HeLa cells were fixed in 4% paraformaldehyde at RT for 15 min.

Green: EEA1 stained by EEA1 antibody [GT10811] (GTX634169) diluted at 1:500.

Blue: Hoechst 33342 staining.

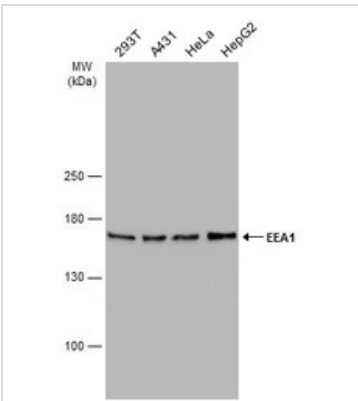

GTX634169 IHC-P Image

EEA1 antibody [GT10811] detects EEA1 protein at cytoplasm by immunohistochemical analysis.

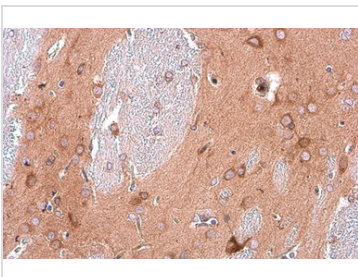
Sample: Paraffin-embedded mouse kidney.

EEA1 stained by EEA1 antibody [GT10811] (GTX634169) diluted at 1:200.

Antigen Retrieval: Citrate buffer, pH 6.0, 15 min


GTX634169 WB Image

Various whole cell extracts (30 µg) were separated by 5% SDS-PAGE, and the membrane was blotted with EEA1 antibody [GT10811] (GTX634169) diluted at 1:5000. The HRP-conjugated anti-mouse IgG antibody (GTX213111-01) was used to detect the primary antibody.


GTX634169 IHC-P Image

EEA1 antibody [GT10811] detects EEA1 protein at cytoplasm by immunohistochemical analysis.

Sample: Paraffin-embedded rat brain.

EEA1 stained by EEA1 antibody [GT10811] (GTX634169) diluted at 1:200.

Antigen Retrieval: Citrate buffer, pH 6.0, 15 min



For full product information, images and publications, please visit our [website](https://www.genetex.com).