

## IL1 beta antibody [GT289]

Cat. No. GTX634188

Host	Mouse
Clonality	Monoclonal
Isotype	IgG2a
Application	WB, ICC/IF
Reactivity	Human

Reference ( 1 )

Package

100 µl, 25 µl

## APPLICATION

## Application Note

\*Optimal dilutions/concentrations should be determined by the researcher.

Suggested dilution	Recommended dilution
WB	1:500-1:3000
ICC/IF	1:100-1:1000

Not tested in other applications.

Calculated MW 31 kDa. ( [Note](#) )

## PROPERTIES

Form	Liquid
Buffer	PBS
Preservative	No preservative
Storage	Store as concentrated solution. Centrifuge briefly prior to opening vial. For short-term storage (1-2 weeks), store at 4°C. For long-term storage, aliquot and store at -20°C or below. Avoid multiple freeze-thaw cycles.
Concentration	1 mg/ml (Please refer to the vial label for the specific concentration.)
Immunogen	Carrier-protein conjugated synthetic peptide encompassing a sequence within the C-terminus region of human IL1 beta. The exact sequence is proprietary.
Purification	Affinity purified by Protein A.
Conjugation	Unconjugated

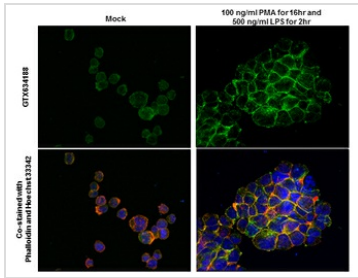
## Note

For laboratory research use only. Not for any clinical, therapeutic, or diagnostic use in humans or animals. Not for animal or human consumption.

Purchasers shall not, and agree not to enable third parties to, analyze, copy, reverse engineer or otherwise attempt to determine the structure or sequence of the product.



For full product information, images and publications, please visit our [website](#).

**DATA IMAGES**

**GTx634188 ICC/IF Image**

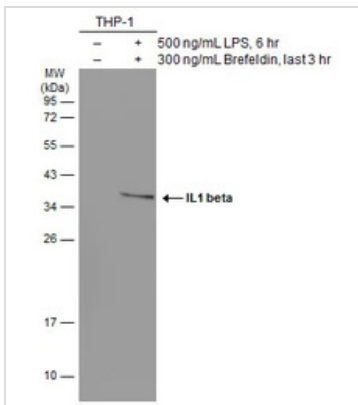
IL1 beta antibody [GT289] detects IL1 beta protein by immunofluorescent analysis.

Sample: Mock and treated THP-1 cells were fixed in 4% paraformaldehyde at RT for 15 min.

Green: IL1 beta stained by IL1 beta antibody [GT289] (GTx634188) diluted at 1:200.

Red: phalloidin, a cytoskeleton marker, diluted at 1:100.

Blue: Fluoroshield with DAPI (GTx30920).


**GTx634188 WB Image**

Untreated (-) and treated (+) THP-1 whole cell extracts (30 µg) were separated by 12% SDS-PAGE, and the membrane was blotted with IL1 beta antibody [GT289] (GTx634188) diluted at 1:1000. The HRP-conjugated anti-mouse IgG antibody (GTx213111-01) was used to detect the primary antibody.



For full product information, images and publications, please visit our [website](https://www.genetex.com).