

## Porcine circovirus type 2 / PCV2 Capsid antibody [GT863]

**Cat. No. GTX634210**

<b>Host</b>	Mouse
<b>Clonality</b>	Monoclonal
<b>Isotype</b>	IgG1
<b>Applications</b>	WB, IHC-P
<b>Reactivity</b>	Porcine circovirus type 2

References ( 4 )

Package

100 µl, 25 µl

## Applications

**Application Note**

\*Optimal dilutions/concentrations should be determined by the researcher.

Suggested dilution	Recommended dilution
WB	1:500-1:3000
IHC-P	1:100-1:1000

Not tested in other applications.

**Calculated MW** 28 kDa. ( [Note](#) )

## Properties

<b>Form</b>	Liquid
<b>Buffer</b>	PBS
<b>Preservative</b>	No preservatives
<b>Storage</b>	Store as concentrated solution. Centrifuge briefly prior to opening vial. For short-term storage (1-2 weeks), store at 4°C. For long-term storage, aliquot and store at -20°C or below. Avoid multiple freeze-thaw cycles.
<b>Concentration</b>	1 mg/ml (Please refer to the vial label for the specific concentration.)
<b>Immunogen</b>	Recombinant fragment of Porcine circovirus type 2 / PCV2 Capsid. (strain Taiwan: Pingtung/Z/1/2014/3)
<b>Purification</b>	Affinity purified by Protein G.
<b>Conjugation</b>	Unconjugated

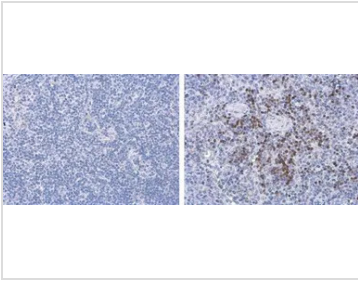
**Note**

For laboratory research use only. Not for any clinical, therapeutic, or diagnostic use in humans or animals. Not for animal or human consumption.

Purchasers shall not, and agree not to enable third parties to, analyze, copy, reverse engineer or otherwise attempt to determine the structure or sequence of the product.

For full product information, images and publications, please visit our [website](#).

## DATA IMAGES



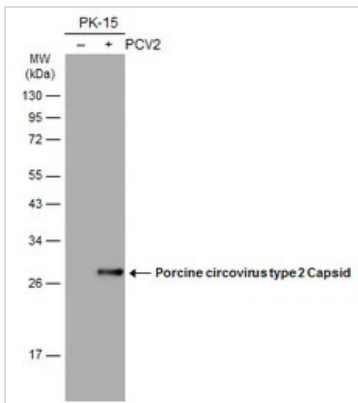
### GTX634210 IHC-P Image

Porcine circovirus type 2 Capsid antibody [GT863] detects PCV2 on lymph node by immunohistochemical analysis.

Sample: Paraffin-embedded PCV2 free (left) and infected (right) swine lymph node.

Porcine circovirus type 2 Capsid antibody [GT863] (GTX634210) diluted at 1:200.

Antigen Retrieval: Citrate buffer, pH 6.0, 15 min



### GTX634210 WB Image

Non-infected (-) and infected (+) PK-15 whole cell extracts (15 µg) were separated by 12% SDS-PAGE, and the membrane was blotted with Porcine circovirus type 2 Capsid antibody [GT863] (GTX634210) diluted at 1:1000. The HRP-conjugated anti-mouse IgG antibody (GTX213111-01) was used to detect the primary antibody.



For full product information, images and publications, please visit our [website](https://www.genetex.com).