

Arginase 1 antibody [GT5811]

Cat. No. GTX634218

Host	Mouse
Clonality	Monoclonal
Isotype	IgG2a
Applications	WB, IHC-P, FCM, ELISA, Sandwich ELISA
Reactivity	Human, Mouse, Rat

References (2)

Package

100 µl, 25 µl

PRODUCT

Summary

Arginase 1 antibody detects arginase 1, an enzyme with a predicted molecular weight of ~35 kDa. Arginase 1 is cytosolic and expressed primarily in hepatocytes, catalyzing the conversion of L-arginine to urea and L-ornithine. The activity of this enzyme has an immunoregulatory function in M2 macrophages.

Applications

Application Note

*Optimal dilutions/concentrations should be determined by the researcher.

Suggested dilution	Recommended dilution
WB	1:500-1:3000
IHC-P	1:100-1:1000
FCM	1:50-1:200
ELISA	1:1000-1:10000
Sandwich ELISA	Assay dependent

Note : Capture : GTX634218 / GTX113131 / GTX109242, Detection : GTX109242 / GTX113131 / GTX634218

Not tested in other applications.

Calculated MW 35 kDa. ([Note](#))

Product Note This antibody is specific for human Arginase 1 protein, and it does not cross react with human Arginase 2 protein.

Properties

Form	Liquid
Buffer	PBS
Preservative	No preservatives
Storage	Store as concentrated solution. Centrifuge briefly prior to opening vial. For short-term storage (1-2 weeks), store at 4°C. For long-term storage, aliquot and store at -20°C or below. Avoid multiple freeze-thaw cycles.
Concentration	3.26 mg/ml (Please refer to the vial label for the specific concentration.)



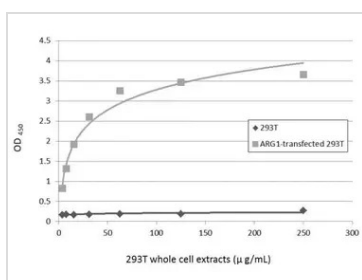
For full product information, images and publications, please visit our [website](#).

Immunogen	Full length human Arginase 1 recombinant protein.
Purification	Affinity purified by Protein A.
Conjugation	Unconjugated

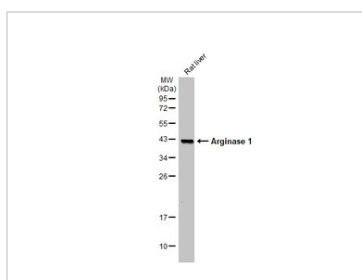
Note

For laboratory research use only. Not for any clinical, therapeutic, or diagnostic use in humans or animals. Not for animal or human consumption.

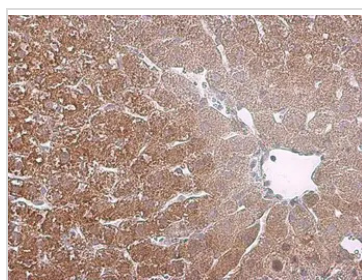
Purchasers shall not, and agree not to enable third parties to, analyze, copy, reverse engineer or otherwise attempt to determine the structure or sequence of the product.

DATA IMAGES

GTX634218 ELISA Image

Sandwich ELISA detection of non-transfected and transfected 293T whole cell extracts using GTX634218 as capture antibody at concentration of 5 μg/mL and GTX109242 as detection antibody at concentration of 1 μg/mL. Rabbit IgG antibody (HRP) (GTX213110-01) was diluted at 1:10000 and used to detect the primary antibody.


GTX634218 WB Image

Rat tissue extract (50 μg) was separated by 12% SDS-PAGE, and the membrane was blotted with Arginase 1 antibody [GT5811] (GTX634218) diluted at 1:1000. The HRP-conjugated anti-mouse IgG antibody (GTX213111-01) was used to detect the primary antibody.

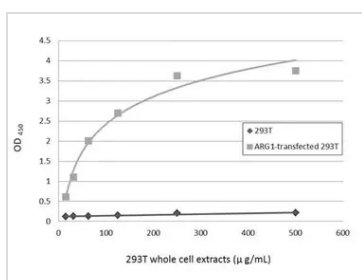

GTX634218 IHC-P Image

Arginase 1 antibody [GT5811] detects Arginase 1 protein at cytoplasm in mouse liver by immunohistochemical analysis.

Sample: Paraffin-embedded mouse liver.

Arginase 1 antibody [GT5811] (GTX634218) diluted at 1:1000.

Antigen Retrieval: Citrate buffer, pH 6.0, 15 min


GTX634218 ELISA Image

Sandwich ELISA detection of non-transfected and transfected 293T whole cell extracts using GTX634218 as capture antibody at concentration of 5 μg/mL and GTX113131 as detection antibody at concentration of 1 μg/mL. Rabbit IgG antibody (HRP) (GTX213110-01) was diluted at 1:10000 and used to detect the primary antibody.



For full product information, images and publications, please visit our [website](https://www.genetex.com).