

ANP antibody [GT1068]

Cat. No. GTX634219

Host	Mouse
Clonality	Monoclonal
Isotype	IgG1
Application	WB, ICC/IF, IHC-P, ELISA, Sandwich ELISA
Reactivity	Human, Mouse

Package
100 µl, 25 µl

APPLICATION

Application Note

*Optimal dilutions/concentrations should be determined by the researcher.

Suggested dilution	Recommended dilution
WB	1:500-1:3000
ICC/IF	Assay dependent
IHC-P	Assay dependent
ELISA	Assay dependent
Sandwich ELISA	Assay dependent

Note : Capture: GTX634219, Detection: GTX639071

Not tested in other applications.

Calculated MW 17 kDa. ([Note](#))

PROPERTIES

Form	Liquid
Buffer	PBS, 20% Glycerol
Preservative	No Preservative
Storage	Store as concentrated solution. Centrifuge briefly prior to opening vial. For short-term storage (1-2 weeks), store at 4°C. For long-term storage, aliquot and store at -20°C or below. Avoid multiple freeze-thaw cycles.
Concentration	1 mg/ml (Please refer to the vial label for the specific concentration.)
Immunogen	Full length human ANP recombinant protein.
Purification	Affinity purified by Protein G.
Conjugation	Unconjugated

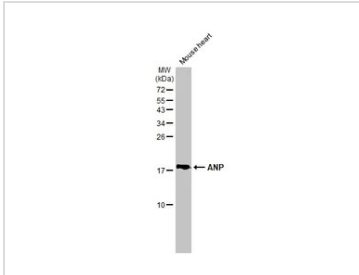


For full product information, images and publications, please visit our [website](#).

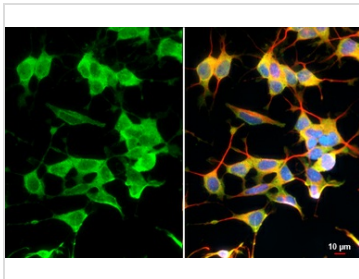
For laboratory research use only. Not for any clinical, therapeutic, or diagnostic use in humans or animals. Not for animal or human consumption.

Note

Purchasers shall not, and agree not to enable third parties to, analyze, copy, reverse engineer or otherwise attempt to determine the structure or sequence of the product.

DATA IMAGES

GTX634219 WB Image

Mouse tissue extract (50 µg) was separated by 15% SDS-PAGE, and the membrane was blotted with ANP antibody [GT1068] (GTX634219) diluted at 1:1000. The HRP-conjugated anti-mouse IgG antibody (GTX213111-01) was used to detect the primary antibody.


GTX634219 ICC/IF Image

ANP antibody [GT1068] detects ANP protein at cytoplasm by immunofluorescent analysis.

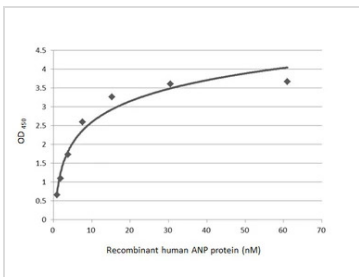
Sample: SH-SY-5Y cells were fixed in 4% paraformaldehyde at RT for 15 min.

Green: ANP stained by ANP antibody [GT1068] (GTX634219) diluted at 1:500.

Red: beta Tubulin, a cytoskeleton marker, stained by beta Tubulin antibody (GTX101279) diluted at 1:1000.

Blue: Fluoroshield with DAPI (GTX30920).

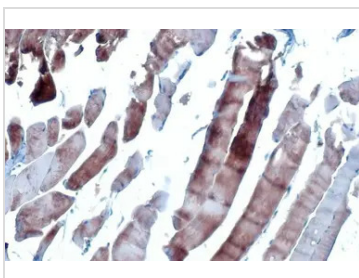
Scale bar= 10µm.


GTX634219 ELISA Image

Sandwich ELISA detection of recombinant Human ANP protein, GST tag (GTX109255-pro) using antibodies as below.

Capture: ANP antibody [GT1068] (GTX634219) (5 µg/mL)

Detection: ANP antibody [HL2617] (GTX639071) (1 µg/mL)


GTX634219 IHC-P Image

ANP antibody [GT1068] detects secreted ANP protein by immunohistochemical analysis.

Sample: Paraffin-embedded mouse heart.

ANP stained by ANP antibody [GT1068] (GTX634219) diluted at 1:200.

Antigen Retrieval: Citrate buffer, pH 6.0, 15 min



For full product information, images and publications, please visit our [website](https://www.genetex.com).