

Myelin basic protein antibody [GT3412]

Cat. No. GTX634292

Host	Mouse
Clonality	Monoclonal
Isotype	IgG1
Application	WB, IHC-P, IHC-Fr
Reactivity	Mouse, Rat

 Review (1)Package
100 µl, 25 µl

APPLICATION

Application Note

*Optimal dilutions/concentrations should be determined by the researcher.

Suggested dilution	Recommended dilution
WB	1:5000-1:20000
IHC-P	1:100-1:1000
IHC-Fr	1:100-1:1000

Not tested in other applications.

Calculated MW 27 kDa. ([Note](#))

PROPERTIES

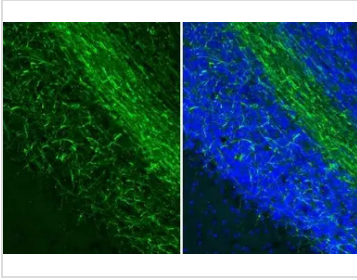
Form	Liquid
Buffer	PBS
Preservative	No preservative
Storage	Store as concentrated solution. Centrifuge briefly prior to opening vial. For short-term storage (1-2 weeks), store at 4°C. For long-term storage, aliquot and store at -20°C or below. Avoid multiple freeze-thaw cycles.
Concentration	0.1 mg/ml (Please refer to the vial label for the specific concentration.)
Immunogen	Carrier-protein conjugated synthetic peptide encompassing a sequence within the C-terminus region of mouse Myelin basic Protein. The exact sequence is proprietary.
Purification	Affinity purified by Protein G.
Conjugation	Unconjugated

Note

For laboratory research use only. Not for any clinical, therapeutic, or diagnostic use in humans or animals. Not for animal or human consumption.

Purchasers shall not, and agree not to enable third parties to, analyze, copy, reverse engineer or otherwise attempt to determine the structure or sequence of the product.

For full product information, images and publications, please visit our [website](#).

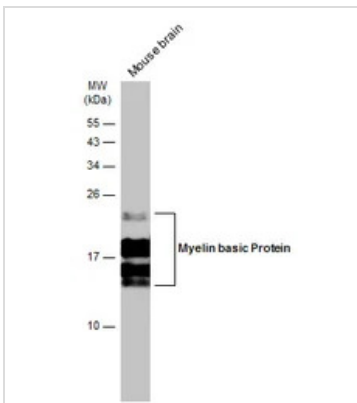
DATA IMAGES

GTX634292 IHC-Fr Image

Myelin basic protein antibody [GT3412] detects Myelin basic protein protein at cell membrane by immunohistochemical analysis.

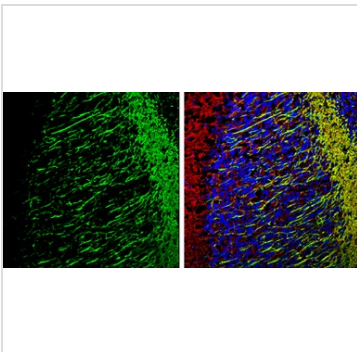
Sample: Frozen-sectioned mouse cerebellum.

Green: Myelin basic protein stained by Myelin basic protein antibody [GT3412] (GTX634292) diluted at 1:200.

Antigen Retrieval: 4% paraformaldehyde


GTX634292 WB Image

Mouse tissue extract (50 µg) was separated by 15% SDS-PAGE, and the membrane was blotted with Myelin basic Protein antibody [GT3412] (GTX634292) diluted at 1:10000. The HRP-conjugated anti-mouse IgG antibody (GTX213111-01) was used to detect the primary antibody.


GTX634292 IHC-Fr Image

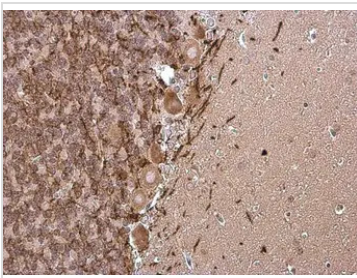
Myelin basic Protein antibody [GT3412] detects Myelin basic Protein expression by immunohistochemical analysis.

Sample: Frozen-sectioned adult mouse cerebellum.

Green: Myelin basic Protein stained by Myelin basic Protein antibody [GT3412] (GTX634292) diluted at 1:500.

Red: beta Tubulin 3/ TUJ1, stained by beta Tubulin 3/ Tuj1 antibody (GTX130245) diluted at 1:500.

Blue: Fluoroshield with DAPI (GTX30920).


GTX634292 IHC-P Image

Myelin basic Protein antibody [GT3412] detects Myelin basic Protein protein at cell membrane and cytoplasm in rat brain by immunohistochemical analysis.

Sample: Paraffin-embedded rat brain.

Myelin basic Protein antibody [GT3412] (GTX634292) diluted at 1:1000.

Antigen Retrieval: Citrate buffer, pH 6.0, 15 min



For full product information, images and publications, please visit our [website](https://www.genetex.com).