

Human Papillomavirus type 18 E7 antibody [GT881]

Cat. No. GTX634337

Host	Mouse
Clonality	Monoclonal
Isotype	IgG1
Applications	WB, ICC/IF, ELISA, Lateral Flow
Reactivity	Human papillomavirus type 18

Package
100 µl, 25 µl

Applications

Application Note

*Optimal dilutions/concentrations should be determined by the researcher.

Suggested dilution	Recommended dilution
WB	1:1000-1:10000
ICC/IF	1:100-1:1000
ELISA	Assay dependent
Lateral Flow	Assay dependent

Note : Capture : GTX638883 / GTX639656, Detection : GTX634337.

Capture : GTX638883, Detection : GTX634337 or Capture : GTX634337, Detection : GTX638883.

Not tested in other applications.

Product Note

This antibody is specific for Human Papillomavirus type 18 E7 protein, and it does not cross-react with Human Papillomavirus type 16 E7 protein.

Properties

Form	Liquid
Buffer	PBS, 20% Glycerol
Preservative	No preservatives
Storage	Store as concentrated solution. Centrifuge briefly prior to opening vial. For short-term storage (1-2 weeks), store at 4°C. For long-term storage, aliquot and store at -20°C or below. Avoid multiple freeze-thaw cycles.
Concentration	1 mg/ml (Please refer to the vial label for the specific concentration.)
Immunogen	Full length Human Papilloma virus type 18 E7 recombinant protein.
Purification	Affinity purified by Protein G.
Conjugation	Unconjugated

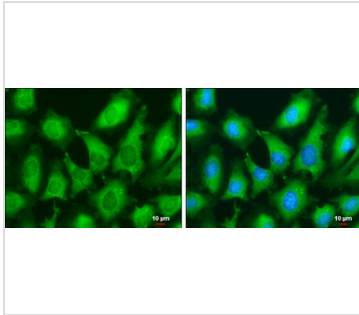


For full product information, images and publications, please visit our [website](#).

For laboratory research use only. Not for any clinical, therapeutic, or diagnostic use in humans or animals. Not for animal or human consumption.

Note

Purchasers shall not, and agree not to enable third parties to, analyze, copy, reverse engineer or otherwise attempt to determine the structure or sequence of the product.

DATA IMAGES

GTG634337 ICC/IF Image

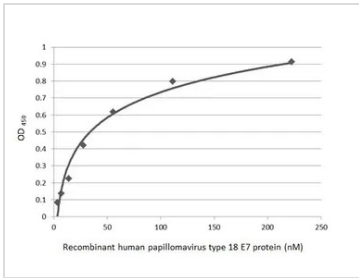
Human Papillomavirus type 18 E7 antibody [GT881] detects Human Papillomavirus type 18 E7 protein at cytoplasm by immunofluorescent analysis.

Sample: HeLa cells were fixed in 4% paraformaldehyde at RT for 15 min.

Green: Human Papillomavirus type 18 E7 stained by Human Papillomavirus type 18 E7 antibody [GT881] (GTG634337) diluted at 1:500.

Blue: Hoechst 33342 staining.

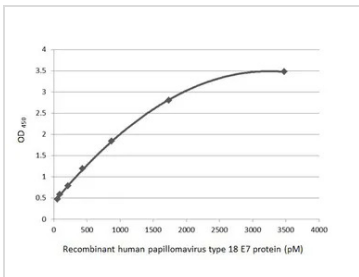
Scale bar= 10μm.


GTG634337 ELISA Image

Sandwich ELISA detection of recombinant Human Papillomavirus type 18 E7 protein, His tag (GTG133412-pro) using antibodies as below.

Capture: Human Papillomavirus type 18 E7 antibody [HL2522] (GTG638883) (5 μg/mL)

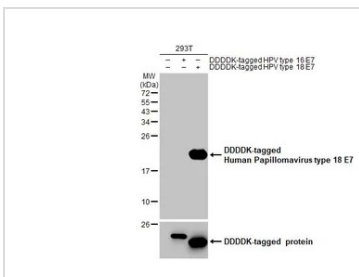
Detection: Human Papillomavirus type 18 E7 antibody [GT881] (GTG634337) (1 μg/mL)


GTG634337 ELISA Image

Sandwich ELISA detection of recombinant Human Papillomavirus type 18 E7 protein, His tag (GTG133412-pro) using antibodies as below.

Capture: Human Papillomavirus type 18 E7 antibody [GT881] (GTG634337) (5 μg/mL)

Detection: Human Papillomavirus type 18 E7 antibody [HL2522] (GTG638883) (1 μg/mL)


GTG634337 WB Image

Non-transfected (-) and transfected (+) 293T whole cell extracts (30 μg) were separated by 15% SDS-PAGE, and the membrane was blotted with Human Papillomavirus type 18 E7 antibody [GT881] (GTG634337) diluted at 1:5000. The HRP-conjugated anti-mouse IgG antibody (GTG213111-01) was used to detect the primary antibody.



For full product information, images and publications, please visit our [website](https://www.genetex.com).