

Perilipin 1 antibody [GT2781]

Cat. No. GTX634406

Host	Mouse
Clonality	Monoclonal
Isotype	IgG1
Application	WB, ICC/IF, IHC-P
Reactivity	Human, Mouse

 Review (1)Package
100 µl, 25 µl

APPLICATION

Application Note

*Optimal dilutions/concentrations should be determined by the researcher.

Suggested dilution	Recommended dilution
WB	1:1000-1:10000
ICC/IF	Assay dependent
IHC-P	Assay dependent

Not tested in other applications.

Calculated MW 56 kDa. ([Note](#))

PROPERTIES

Form	Liquid
Buffer	PBS, 20% Glycerol
Preservative	No Preservative
Storage	Store as concentrated solution. Centrifuge briefly prior to opening vial. For short-term storage (1-2 weeks), store at 4°C. For long-term storage, aliquot and store at -20°C or below. Avoid multiple freeze-thaw cycles.
Concentration	1 mg/ml (Please refer to the vial label for the specific concentration.)
Immunogen	Recombinant protein encompassing a sequence within the center region of human Perilipin 1. The exact sequence is proprietary.
Purification	Affinity purified by Protein G.
Conjugation	Unconjugated

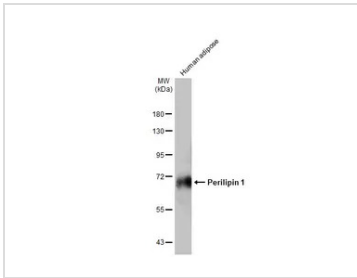
Note

For laboratory research use only. Not for any clinical, therapeutic, or diagnostic use in humans or animals. Not for animal or human consumption.

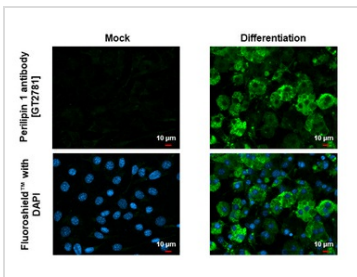
Purchasers shall not, and agree not to enable third parties to, analyze, copy, reverse engineer or otherwise attempt to determine the structure or sequence of the product.



For full product information, images and publications, please visit our [website](#).

DATA IMAGES

GTX634406 WB Image

Human tissue extract (30 µg) was separated by 7.5% SDS-PAGE, and the membrane was blotted with Perilipin 1 antibody [GT2781] (GTX634406) diluted at 1:2000. The HRP-conjugated anti-mouse IgG antibody (GTX213111-01) was used to detect the primary antibody, and the signal was developed with Trident ECL plus-Enhanced.

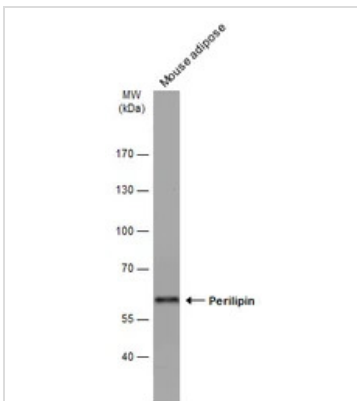

GTX634406 ICC/IF Image

Perilipin 1 antibody [GT2781] detects Perilipin 1 protein at lipid droplet by immunofluorescent analysis. Sample: Mock and differentiated 3T3-L1 cells were fixed in ice-cold MeOH for 5 min.

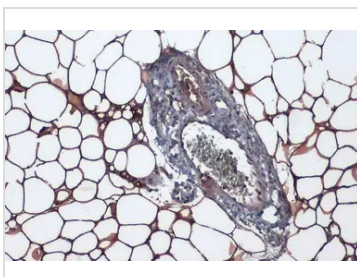
Green: Perilipin 1 stained by Perilipin 1 antibody [GT2781] (GTX634406) diluted at 1:500.

Blue: Fluoroshield with DAPI (GTX30920).

The observed subcellular location is based on the publication: PMID: 36204273


GTX634406 WB Image

Mouse tissue extract (50 µg) was separated by 7.5% SDS-PAGE, and the membrane was blotted with Perilipin antibody [GT2781] (GTX634406) diluted at 1:5000. The HRP-conjugated anti-mouse IgG antibody (GTX213111-01) was used to detect the primary antibody.


GTX634406 IHC-P Image

Perilipin 1 antibody [GT2781] detects Perilipin 1 protein at cytoplasm by immunohistochemical analysis.

Sample: Paraffin-embedded mouse white adipocyte.

Perilipin 1 stained by Perilipin 1 antibody [GT2781] (GTX634406) diluted at 1:200.

Antigen Retrieval: Citrate buffer, pH 6.0, 15 min



For full product information, images and publications, please visit our [website](https://www.genetex.com).