

Cyclin A2 antibody [GT2547]

Cat. No. GTX634420

Host	Mouse
Clonality	Monoclonal
Isotype	IgG1
Application	WB, ICC/IF, IHC-P
Reactivity	Human

Reference (5)
 Package
 100 µl, 25 µl

APPLICATION

Application Note

*Optimal dilutions/concentrations should be determined by the researcher.

Suggested dilution	Recommended dilution
WB	1:1000-1:10000
ICC/IF	1:100-1:1000
IHC-P	1:100-1:1000

Not tested in other applications.

Calculated MW 49 kDa. ([Note](#))

PROPERTIES

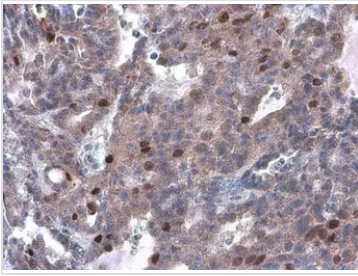
Form	Liquid
Buffer	PBS
Preservative	No preservative
Storage	Store as concentrated solution. Centrifuge briefly prior to opening vial. For short-term storage (1-2 weeks), store at 4°C. For long-term storage, aliquot and store at -20°C or below. Avoid multiple freeze-thaw cycles.
Concentration	1 mg/ml (Please refer to the vial label for the specific concentration.)
Immunogen	Recombinant protein encompassing a sequence within the center region of human Cyclin A2. The exact sequence is proprietary.
Purification	Affinity purified by Protein G.
Conjugation	Unconjugated

Note For laboratory research use only. Not for any clinical, therapeutic, or diagnostic use in humans or animals. Not for animal or human consumption.

Purchasers shall not, and agree not to enable third parties to, analyze, copy, reverse engineer or otherwise attempt to determine the structure or sequence of the product.



For full product information, images and publications, please visit our [website](#).

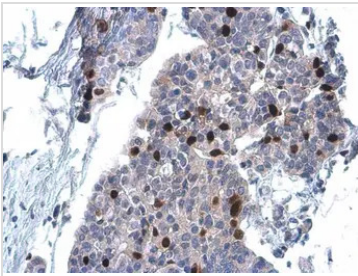
DATA IMAGES

GTX634420 IHC-P Image

Cyclin A2 antibody [GT2547] detects Cyclin A2 protein at nucleus by immunohistochemical analysis.

Sample: Paraffin-embedded human endometrial carcinoma.

Cyclin A2 stained by Cyclin A2 antibody [GT2547] (GTX634420) diluted at 1:200.

Antigen Retrieval: Citrate buffer, pH 6.0, 15 min

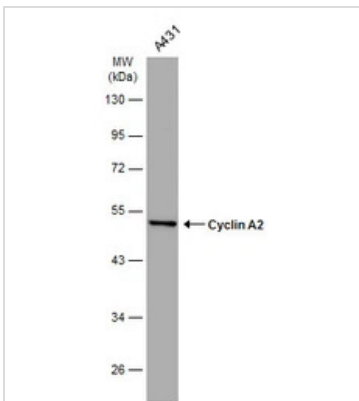

GTX634420 IHC-P Image

Cyclin A2 antibody [GT2547] detects Cyclin A2 protein at nucleus by immunohistochemical analysis.

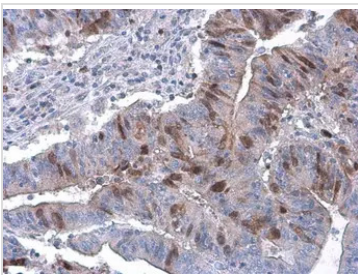
Sample: Paraffin-embedded human breast carcinoma.

Cyclin A2 stained by Cyclin A2 antibody [GT2547] (GTX634420) diluted at 1:200.

Antigen Retrieval: Citrate buffer, pH 6.0, 15 min


GTX634420 WB Image

Whole cell extract (30 µg) was separated by 10% SDS-PAGE, and the membrane was blotted with Cyclin A2 antibody [GT2547] (GTX634420) diluted at 1:5000. The HRP-conjugated anti-mouse IgG antibody (GTX213111-01) was used to detect the primary antibody.


GTX634420 IHC-P Image

Cyclin A2 antibody [GT2547] detects Cyclin A2 protein at nucleus by immunohistochemical analysis.

Sample: Paraffin-embedded human colon cancer.

Cyclin A2 stained by Cyclin A2 antibody [GT2547] (GTX634420) diluted at 1:200.

Antigen Retrieval: Citrate buffer, pH 6.0, 15 min



For full product information, images and publications, please visit our [website](https://www.genetex.com).