

# HSP27 antibody [GT6310]

**Cat. No. GTX634459**

<b>Host</b>	Mouse
<b>Clonality</b>	Monoclonal
<b>Isotype</b>	IgG1
<b>Applications</b>	WB, ICC/IF, IHC-P
<b>Reactivity</b>	Human, Mouse, Rat

**Package**  
100 µl, 25 µl

## Applications

### Application Note

\*Optimal dilutions/concentrations should be determined by the researcher.

Suggested dilution	Recommended dilution
WB	1:1000-1:10000
ICC/IF	1:100-1:1000
IHC-P	1:100-1:1000

Not tested in other applications.

**Observed MW (kDa)** 27 kDa.

## Properties

<b>Form</b>	Liquid
<b>Buffer</b>	PBS
<b>Preservative</b>	No preservatives
<b>Storage</b>	Store as concentrated solution. Centrifuge briefly prior to opening vial. For short-term storage (1-2 weeks), store at 4°C. For long-term storage, aliquot and store at -20°C or below. Avoid multiple freeze-thaw cycles.
<b>Concentration</b>	1 mg/ml (Please refer to the vial label for the specific concentration.)
<b>Immunogen</b>	Recombinant protein encompassing a sequence within the center region of human HSP27. The exact sequence is proprietary.
<b>Purification</b>	Affinity purified by Protein G.
<b>Conjugation</b>	Unconjugated

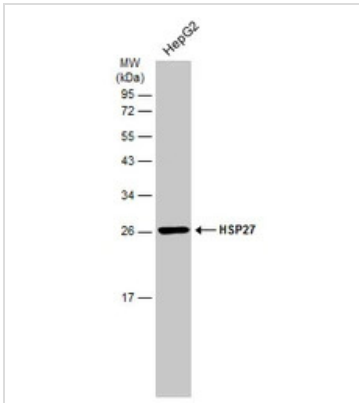
### Note

For laboratory research use only. Not for any clinical, therapeutic, or diagnostic use in humans or animals. Not for animal or human consumption.

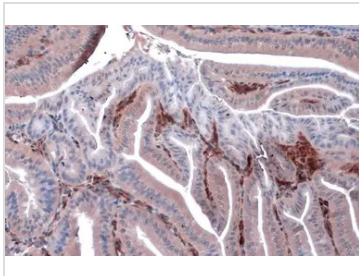
Purchasers shall not, and agree not to enable third parties to, analyze, copy, reverse engineer or otherwise attempt to determine the structure or sequence of the product.



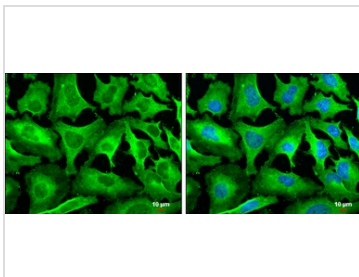
For full product information, images and publications, please visit our [website](#).

**DATA IMAGES**

**GTX634459 WB Image**

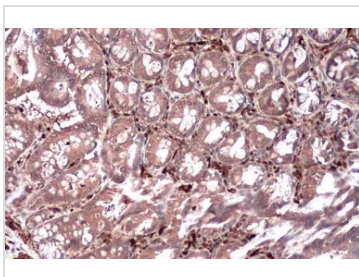
Whole cell extract (30 µg) was separated by 12% SDS-PAGE, and the membrane was blotted with HSP27 antibody [GT6310] (GTX634459) diluted at 1:5000. The HRP-conjugated anti-mouse IgG antibody (GTX213111-01) was used to detect the primary antibody.


**GTX634459 IHC-P Image**

HSP27 antibody [GT6310] detects HSP27 protein at cytoplasm by immunohistochemical analysis.  
Sample: Paraffin-embedded mouse duodenum.  
HSP27 stained by HSP27 antibody [GT6310] (GTX634459) diluted at 1:200.  
Antigen Retrieval: Citrate buffer, pH 6.0, 15 min


**GTX634459 ICC/IF Image**

HSP27 antibody [GT6310] detects HSP27 protein at cytoplasm by immunofluorescent analysis.  
Sample: HeLa cells were fixed in 4% paraformaldehyde at RT for 15 min.  
Green: HSP27 stained by HSP27 antibody [GT6310] (GTX634459) diluted at 1:500.  
Blue: Hoechst 33342 staining.  
Scale bar= 10µm.


**GTX634459 IHC-P Image**

HSP27 antibody [GT6310] detects HSP27 protein at cytoplasm by immunohistochemical analysis.  
Sample: Paraffin-embedded rat colon.  
HSP27 stained by HSP27 antibody [GT6310] (GTX634459) diluted at 1:200.  
Antigen Retrieval: Citrate buffer, pH 6.0, 15 min



For full product information, images and publications, please visit our [website](https://www.genetex.com).