

MAP2 antibody [GT378]

Cat. No. GTX634471

Host	Mouse
Clonality	Monoclonal
Isotype	IgG2a
Applications	WB, ICC/IF, IHC-P
Reactivity	Mouse, Rat

Package
100 µl, 25 µl

Applications

Application Note

*Optimal dilutions/concentrations should be determined by the researcher.

Suggested dilution	Recommended dilution
WB	1:500-1:3000
ICC/IF	1:100-1:1000
IHC-P	1:100-1:1000

Not tested in other applications.

Calculated MW 199 kDa. ([Note](#))

Properties

Form	Liquid
Buffer	PBS; 1% BSA
Preservative	No preservatives
Storage	Store as concentrated solution. Centrifuge briefly prior to opening vial. For short-term storage (1-2 weeks), store at 4°C. For long-term storage, aliquot and store at -20°C or below. Avoid multiple freeze-thaw cycles.
Concentration	0.2 mg/ml (Please refer to the vial label for the specific concentration.)
Immunogen	Carrier-protein conjugated synthetic peptide encompassing a sequence within the N-terminus region of mouse MAP2. The exact sequence is proprietary.
Purification	Affinity purified by Protein A.
Conjugation	Unconjugated

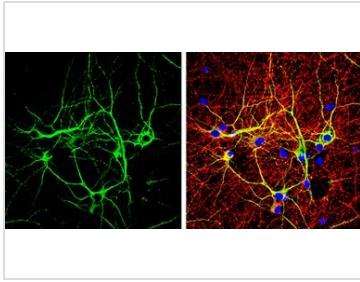
Note For laboratory research use only. Not for any clinical, therapeutic, or diagnostic use in humans or animals. Not for animal or human consumption.

Purchasers shall not, and agree not to enable third parties to, analyze, copy, reverse engineer or otherwise attempt to determine the structure or sequence of the product.



For full product information, images and publications, please visit our [website](#).

DATA IMAGES

**GTX634471 ICC/IF Image**

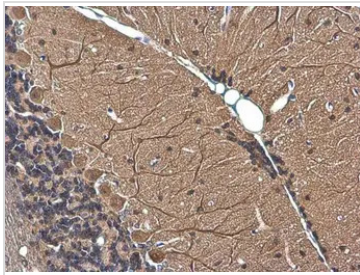
MAP2 antibody [GT378] detects MAP2 protein in dendrites, but not in axons, by immunofluorescent analysis.

Sample: DIV10 rat E18 primary cortical neuron cells were fixed in 4% paraformaldehyde at RT for 15 min.

Green: Dendrite marker MAP2 stained by MAP2 antibody [GT378] (GTX634471) diluted at 1:1000.

Red: Axon marker Tau, stained by Tau antibody (GTX130462) diluted at 1:500.

Blue: Fluoroshield with DAPI (GTX30920).

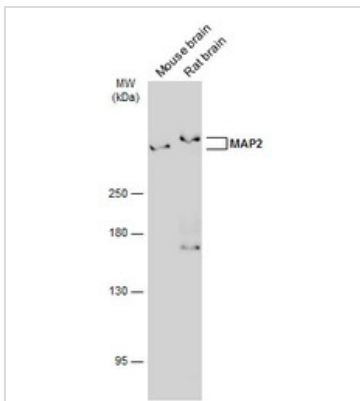
**GTX634471 IHC-P Image**

MAP2 antibody [GT378] detects MAP2 protein at cytoplasm by immunohistochemical analysis.

Sample: Paraffin-embedded mouse cerebellum.

MAP2 stained by MAP2 antibody [GT378] (GTX634471) diluted at 1:200.

Antigen Retrieval: Citrate buffer, pH 6.0, 15 min

**GTX634471 WB Image**

Various tissue extracts (50 μ g) were separated by 5% SDS-PAGE, and the membrane was blotted with MAP2 antibody [GT378] (GTX634471) diluted at 1:1000. The HRP-conjugated anti-mouse IgG antibody (GTX213111-01) was used to detect the primary antibody.



For full product information, images and publications, please visit our [website](#).