

Tyrosine Hydroxylase antibody [GT234]

Cat. No. GTX634481

Host	Mouse
Clonality	Monoclonal
Isotype	IgG1
Applications	WB, ICC/IF, IHC-P
Reactivity	Mouse, Rat

References (2)

★★★★★ Review (1)

Package

100 µl, 25 µl

Applications

Application Note

*Optimal dilutions/concentrations should be determined by the researcher.

Suggested dilution	Recommended dilution
WB	1:500-1:3000
ICC/IF	Assay dependent
IHC-P	1:100-1:1000

Not tested in other applications.

Calculated MW 59 kDa. ([Note](#))

Properties

Form	Liquid
Buffer	PBS
Preservative	No preservative
Storage	Store as concentrated solution. Centrifuge briefly prior to opening vial. For short-term storage (1-2 weeks), store at 4°C. For long-term storage, aliquot and store at -20°C or below. Avoid multiple freeze-thaw cycles.
Concentration	1 mg/ml (Please refer to the vial label for the specific concentration.)
Immunogen	Recombinant protein encompassing a sequence within the center region of human Tyrosine Hydroxylase. The exact sequence is proprietary.
Purification	Affinity purified by Protein G.
Conjugation	Unconjugated

Note

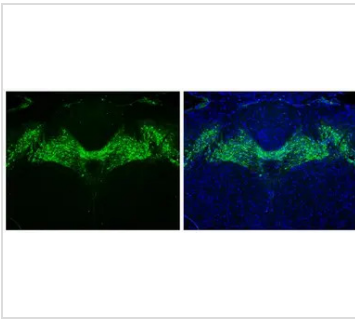
For laboratory research use only. Not for any clinical, therapeutic, or diagnostic use in humans or animals. Not for animal or human consumption.

Purchasers shall not, and agree not to enable third parties to, analyze, copy, reverse engineer or otherwise attempt to determine the structure or sequence of the product.



For full product information, images and publications, please visit our [website](#).

Date 2025 / 08 / 02 Page 1 of 2

DATA IMAGES

GTX634481 IHC-P Image

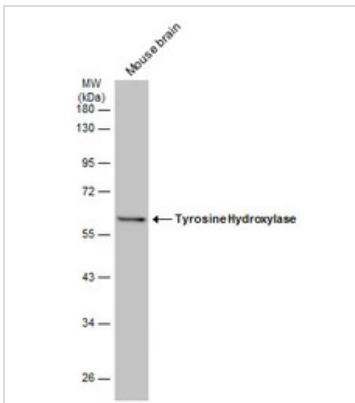
Tyrosine Hydroxylase antibody [GT234] detects Tyrosine Hydroxylase protein in midbrain dopaminergic neurons by immunohistochemical analysis.

Sample: Paraffin-embedded mouse brain.

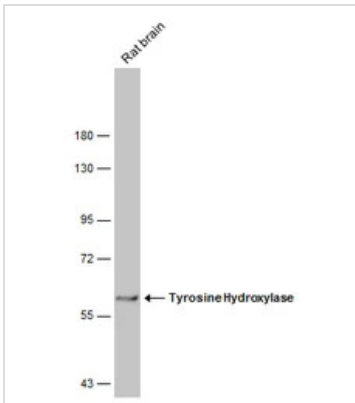
Green: Tyrosine Hydroxylase stained by Tyrosine Hydroxylase antibody [GT234] (GTX634481) diluted at 1:250.

Blue: Fluoroshield with DAPI (GTX30920).

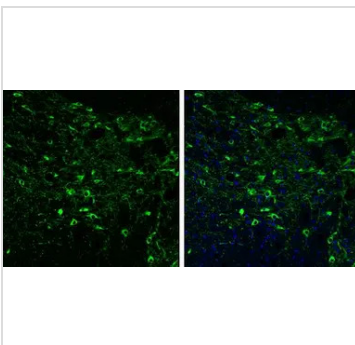
Antigen Retrieval: Citrate buffer, pH 6.0, 15 min


GTX634481 WB Image

Mouse tissue extract (30 µg) was separated by 10% SDS-PAGE, and the membrane was blotted with Tyrosine Hydroxylase antibody [GT234] (GTX634481) diluted at 1:1000. The HRP-conjugated anti-mouse IgG antibody (GTX213111-01) was used to detect the primary antibody.


GTX634481 WB Image

Rat tissue extract (50 µg) was separated by 7.5% SDS-PAGE, and the membrane was blotted with Tyrosine Hydroxylase antibody [GT234] (GTX634481) diluted at 1:1000. The HRP-conjugated anti-mouse IgG antibody (GTX213111-01) was used to detect the primary antibody.


GTX634481 IHC-P Image

Tyrosine Hydroxylase antibody [GT234] detects Tyrosine Hydroxylase protein at cytoplasm of dopaminergic neurons by immunohistochemical analysis.

Sample: Paraffin-embedded mouse midbrain.

Green: Tyrosine Hydroxylase stained by Tyrosine Hydroxylase antibody [GT234] (GTX634481) diluted at 1:250.

Blue: Fluoroshield with DAPI (GTX30920).

Antigen Retrieval: Citrate buffer, pH 6.0, 15 min



For full product information, images and publications, please visit our [website](https://www.genetex.com).