

C9orf72 antibody [GT1553]

Cat. No. GTX634482

Host	Mouse
Clonality	Monoclonal
Isotype	IgG2a
Applications	WB, ICC/IF, IHC-P
Reactivity	Human, Mouse, Rat

References (10)

Package

100 µl, 25 µl

PRODUCT

Summary

C9orf72 antibody detects the C9orf72 protein, which is 481 amino acids in length and has a predicted molecular weight of 54 kDa. The accumulation of abnormal nucleotide repeats in the C9orf72 gene is the most common genetic cause of amyotrophic lateral sclerosis (ALS) and frontotemporal dementia (FTD), accounting for approximately 34.2% and 25.9% of cases according to van Blitterswijk et al. (PMID: 23160421).

Applications

Application Note

*Optimal dilutions/concentrations should be determined by the researcher.

Suggested dilution	Recommended dilution
WB	1:100-1:1000
ICC/IF	Assay dependent
IHC-P	1:100-1:1000

Not tested in other applications.

Observed MW (kDa) 54 kDa.

Product Note KO/KD validation is based on published data (PMID: 31651360).

Properties

Form	Liquid
Buffer	PBS
Preservative	No preservatives
Storage	Store as concentrated solution. Centrifuge briefly prior to opening vial. For short-term storage (1-2 weeks), store at 4°C. For long-term storage, aliquot and store at -20°C or below. Avoid multiple freeze-thaw cycles.
Concentration	1 mg/ml (Please refer to the vial label for the specific concentration.)
Immunogen	Recombinant protein encompassing a sequence within the N-terminus region of human C9orf72. The exact sequence is proprietary.
Purification	Affinity purified by Protein A.



For full product information, images and publications, please visit our [website](#).

Date 2025 / 08 / 16 Page 1 of 2

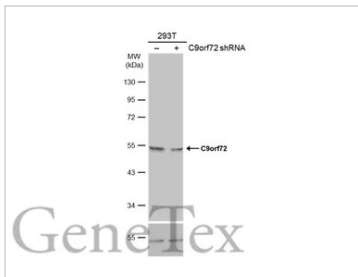
Conjugation

Unconjugated

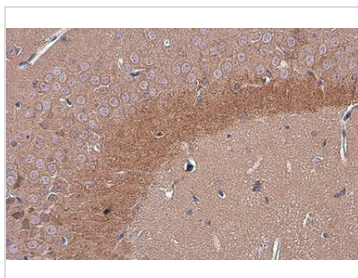
Note

For laboratory research use only. Not for any clinical, therapeutic, or diagnostic use in humans or animals. Not for animal or human consumption.

Purchasers shall not, and agree not to enable third parties to, analyze, copy, reverse engineer or otherwise attempt to determine the structure or sequence of the product.

DATA IMAGES

GTX634482 WB Image

Non-transfected (–) and transfected (+) 293T whole cell extracts (60 µg) were separated by 10% SDS-PAGE, and the membrane was blotted with C9orf72 antibody [GT1553] (GTX634482) diluted at 1:500. The HRP-conjugated anti-mouse IgG antibody (GTX213111-01) was used to detect the primary antibody, and the signal was developed with Trident ECL plus-Enhanced.

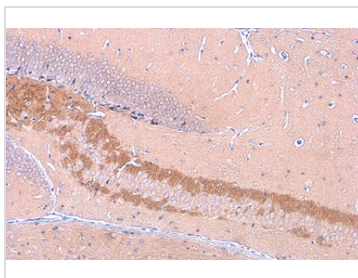

GTX634482 IHC-P Image

C9orf72 antibody [GT1553] detects C9orf72 protein at cytoplasm by immunohistochemical analysis.

Sample: Paraffin-embedded mouse hippocampus.

C9orf72 stained by C9orf72 antibody [GT1553] (GTX634482) diluted at 1:100.

Antigen Retrieval: Citrate buffer, pH 6.0, 15 min

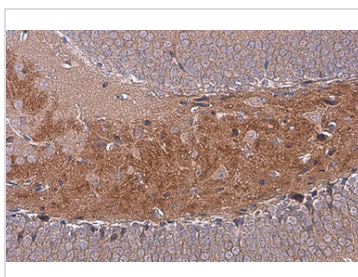

GTX634482 IHC-P Image

C9orf72 antibody [GT1553] detects C9orf72 protein at cytoplasm by immunohistochemical analysis.

Sample: Paraffin-embedded mouse hippocampus.

C9orf72 stained by C9orf72 antibody [GT1553] (GTX634482) diluted at 1:100.

Antigen Retrieval: Citrate buffer, pH 6.0, 15 min


GTX634482 IHC-P Image

C9orf72 antibody [GT1553] detects C9orf72 protein at cytoplasm by immunohistochemical analysis.

Sample: Paraffin-embedded mouse hippocampus.

C9orf72 stained by C9orf72 antibody [GT1553] (GTX634482) diluted at 1:100.

Antigen Retrieval: Citrate buffer, pH 6.0, 15 min



For full product information, images and publications, please visit our [website](https://www.genetex.com).