

## NF-M antibody [GT883]

Cat. No. GTX634483

Host	Mouse
Clonality	Monoclonal
Isotype	IgG1
Applications	WB, ICC/IF, IHC-P, IHC-Fr
Reactivity	Human, Mouse, Rat

References ( 2 )

Package

100 µl, 25 µl

## Applications

## Application Note

\*Optimal dilutions/concentrations should be determined by the researcher.

Suggested dilution	Recommended dilution
WB	1:5000-1:25000
ICC/IF	Assay dependent
IHC-P	1:100-1:1000
IHC-Fr	1:100-1:1000

Not tested in other applications.

Calculated MW 96 kDa. ( [Note](#) )

## Properties

Form	Liquid
Buffer	PBS
Preservative	No preservatives
Storage	Store as concentrated solution. Centrifuge briefly prior to opening vial. For short-term storage (1-2 weeks), store at 4°C. For long-term storage, aliquot and store at -20°C or below. Avoid multiple freeze-thaw cycles.
Concentration	1.25 mg/ml (Please refer to the vial label for the specific concentration.)
Immunogen	Carrier-protein conjugated synthetic peptide encompassing a sequence within the N-terminus region of mouse NF-M. The exact sequence is proprietary.
Purification	Affinity purified by Protein G.
Conjugation	Unconjugated



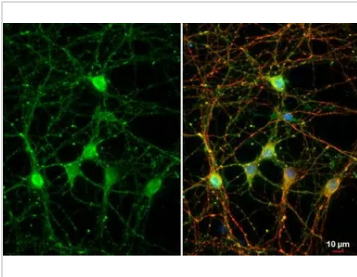
For full product information, images and publications, please visit our [website](#).

For laboratory research use only. Not for any clinical, therapeutic, or diagnostic use in humans or animals. Not for animal or human consumption.

## Note

Purchasers shall not, and agree not to enable third parties to, analyze, copy, reverse engineer or otherwise attempt to determine the structure or sequence of the product.

## DATA IMAGES



### GTX634483 ICC/IF Image

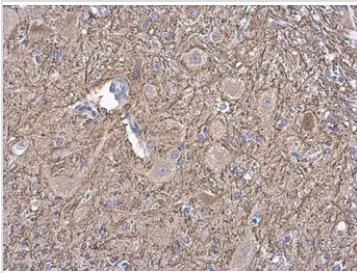
NF-M antibody [GT883] detects NF-M protein at axon by immunofluorescent analysis.

Sample: DIV10 rat E18 primary hippocampal neuron and glia cells were fixed in 4% paraformaldehyde at RT for 15 min.

Green: NF-M stained by NF-M antibody [GT883] (GTX634483) diluted at 1:250.

Red: Tau, a cytoskeleton marker, stained by Tau antibody (GTX130462) diluted at 1:500.

Blue: Fluoroshield with DAPI (GTX30920).



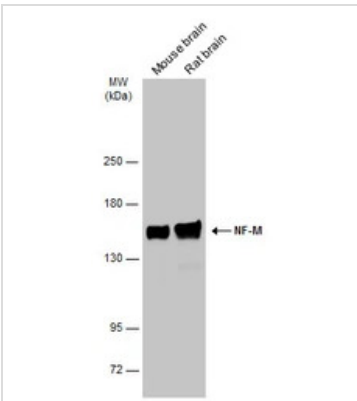
### GTX634483 IHC-P Image

NF-M antibody [GT883] detects NF-M protein at by immunohistochemical analysis.

Sample: Paraffin-embedded rat brain.

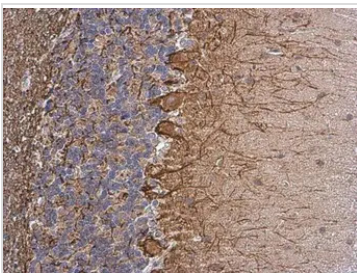
NF-M stained by NF-M antibody [GT883] (GTX634483) diluted at 1:200.

Antigen Retrieval: Citrate buffer, pH 6.0, 15 min



### GTX634483 WB Image

Various tissue extracts (50 µg) were separated by 5% SDS-PAGE, and the membrane was blotted with NF-M antibody [GT883] (GTX634483) diluted at 1:25000. The HRP-conjugated anti-mouse IgG antibody (GTX213111-01) was used to detect the primary antibody.



### GTX634483 IHC-P Image

NF-M antibody [GT883] detects NF-M protein at by immunohistochemical analysis.

Sample: Paraffin-embedded rat brain.

NF-M stained by NF-M antibody [GT883] (GTX634483) diluted at 1:200.

Antigen Retrieval: Citrate buffer, pH 6.0, 15 min



For full product information, images and publications, please visit our [website](https://www.genetex.com).