

Vinculin antibody [GT3210]

Cat. No. GTX634535

Host	Mouse
Clonality	Monoclonal
Isotype	IgG1
Applications	WB, IHC-P
Reactivity	Human, Mouse, Rat

Package
100 µl, 25 µl

Applications

Application Note

*Optimal dilutions/concentrations should be determined by the researcher.

Suggested dilution	Recommended dilution
WB	1:100-1:1000
IHC-P	1:100-1:1000

Not tested in other applications.

Calculated MW 124 kDa. ([Note](#))

Properties

Form	Liquid
Buffer	PBS
Preservative	No preservatives
Storage	Store as concentrated solution. Centrifuge briefly prior to opening vial. For short-term storage (1-2 weeks), store at 4°C. For long-term storage, aliquot and store at -20°C or below. Avoid multiple freeze-thaw cycles.
Concentration	1 mg/ml (Please refer to the vial label for the specific concentration.)
Immunogen	Recombinant protein encompassing a sequence within the center region of human Vinculin. The exact sequence is proprietary.
Purification	Affinity purified by Protein G.
Conjugation	Unconjugated

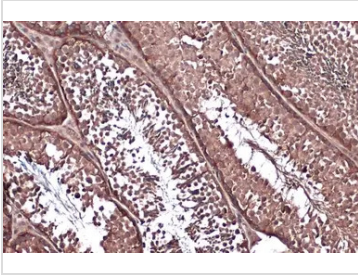
Note

For laboratory research use only. Not for any clinical, therapeutic, or diagnostic use in humans or animals. Not for animal or human consumption.

Purchasers shall not, and agree not to enable third parties to, analyze, copy, reverse engineer or otherwise attempt to determine the structure or sequence of the product.



For full product information, images and publications, please visit our [website](#).

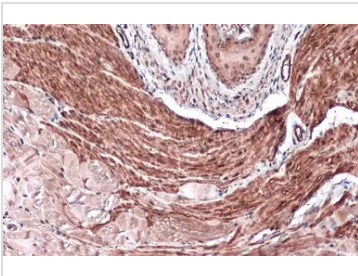
DATA IMAGES

GTX634535 IHC-P Image

Vinculin antibody [GT3210] detects Vinculin protein at cell membrane and cytoplasm by immunohistochemical analysis.

Sample: Paraffin-embedded mouse testis.

Vinculin stained by Vinculin antibody [GT3210] (GTX634535) diluted at 1:200.

Antigen Retrieval: Citrate buffer, pH 6.0, 15 min

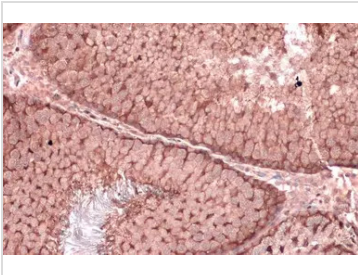

GTX634535 IHC-P Image

Vinculin antibody [GT3210] detects Vinculin protein at cell membrane and cytoplasm by immunohistochemical analysis.

Sample: Paraffin-embedded mouse muscle.

Vinculin stained by Vinculin antibody [GT3210] (GTX634535) diluted at 1:200.

Antigen Retrieval: Citrate buffer, pH 6.0, 15 min

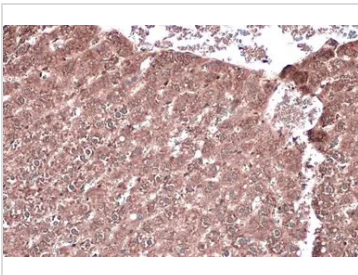

GTX634535 IHC-P Image

Vinculin antibody [GT3210] detects Vinculin protein at cell membrane and cytoplasm by immunohistochemical analysis.

Sample: Paraffin-embedded rat testis.

Vinculin stained by Vinculin antibody [GT3210] (GTX634535) diluted at 1:200.

Antigen Retrieval: Citrate buffer, pH 6.0, 15 min

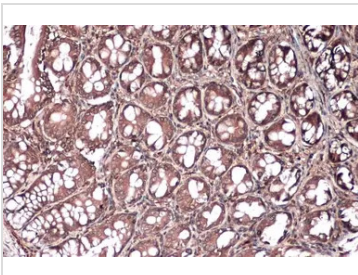

GTX634535 IHC-P Image

Vinculin antibody [GT3210] detects Vinculin protein at cytoplasm by immunohistochemical analysis.

Sample: Paraffin-embedded rat liver.

Vinculin stained by Vinculin antibody [GT3210] (GTX634535) diluted at 1:200.

Antigen Retrieval: Citrate buffer, pH 6.0, 15 min


GTX634535 IHC-P Image

Vinculin antibody [GT3210] detects Vinculin protein at cell membrane and cytoplasm by immunohistochemical analysis.

Sample: Paraffin-embedded rat colon.

Vinculin stained by Vinculin antibody [GT3210] (GTX634535) diluted at 1:200.

Antigen Retrieval: Citrate buffer, pH 6.0, 15 min



For full product information, images and publications, please visit our [website](https://www.genetex.com).