

IDO1 antibody [GT273]

Cat. No. GTX634652

Host	Mouse
Clonality	Monoclonal
Isotype	IgG2a
Application	WB, IHC-P
Reactivity	Human, Mouse

Reference (2)

Package

100 µl, 25 µl

APPLICATION

Application Note

*Optimal dilutions/concentrations should be determined by the researcher.

Suggested dilution	Recommended dilution
WB	1:1000-1:10000
IHC-P	1:100-1:1000

Not tested in other applications.

Calculated MW 45 kDa. ([Note](#))

PROPERTIES

Form	Liquid
Buffer	PBS, 20% Glycerol
Preservative	No Preservative
Storage	Store as concentrated solution. Centrifuge briefly prior to opening vial. For short-term storage (1-2 weeks), store at 4°C. For long-term storage, aliquot and store at -20°C or below. Avoid multiple freeze-thaw cycles.
Concentration	1 mg/ml (Please refer to the vial label for the specific concentration.)
Immunogen	Recombinant protein encompassing a sequence within the N-terminus region of human IDO1. The exact sequence is proprietary.
Purification	Affinity purified by Protein G.
Conjugation	Unconjugated

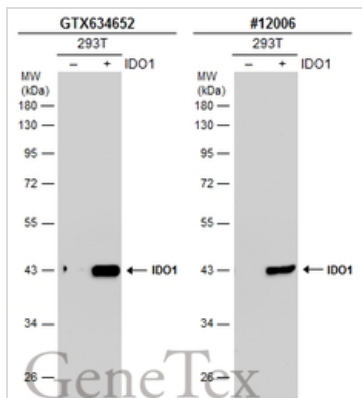
Note

For laboratory research use only. Not for any clinical, therapeutic, or diagnostic use in humans or animals. Not for animal or human consumption.

Purchasers shall not, and agree not to enable third parties to, analyze, copy, reverse engineer or otherwise attempt to determine the structure or sequence of the product.

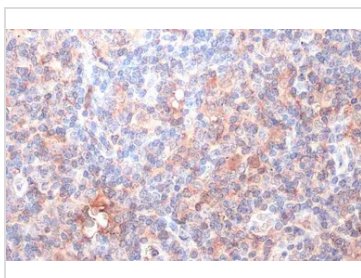


For full product information, images and publications, please visit our [website](#).

DATA IMAGES

GTX634652 WB Image

Non-transfected (-) and transfected (+) 293T whole cell extracts (30 µg) were separated by 10% SDS-PAGE, and the membranes were blotted with IDO1 antibody [GT273] (GTX634652) diluted at 1:5000 and competitor's antibody (CST#12006) diluted at 1:1000. The HRP-conjugated anti-mouse IgG antibody (GTX213111-01) was used to detect the primary antibody.

*The competitor is not affiliated with GeneTex and does not endorse this product.

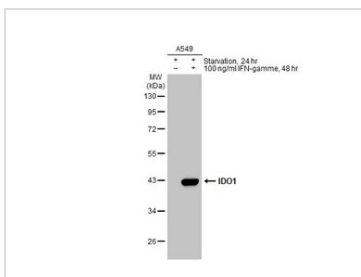

GTX634652 IHC-P Image

IDO1 antibody [GT273] detects IDO1 protein at cell membrane and cytoplasm by immunohistochemical analysis.

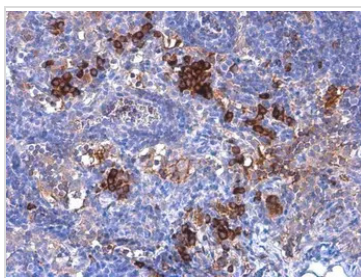
Sample: Paraffin-embedded human tonsil.

IDO1 stained by IDO1 antibody [GT273] (GTX634652) diluted at 1:200.

Antigen Retrieval: Citrate buffer, pH 6.0, 15 min


GTX634652 WB Image

Untreated (-) and treated (+) A549 whole cell extracts (30 µg) were separated by 10% SDS-PAGE, and the membrane was blotted with IDO1 antibody [GT273] (GTX634652) diluted at 1:5000. The HRP-conjugated anti-mouse IgG antibody (GTX213111-01) was used to detect the primary antibody.


GTX634652 IHC-P Image

IDO1 antibody [GT273] detects IDO1 protein at cytoplasm by immunohistochemical analysis.

Sample: Paraffin-embedded mouse mammary gland.

IDO1 stained by IDO1 antibody [GT273] (GTX634652) diluted at 1:200.

Antigen Retrieval: Citrate buffer, pH 6.0, 15 min



For full product information, images and publications, please visit our [website](https://www.genetex.com).