

# Glucocorticoid Receptor antibody [GT1073]

**Cat. No. GTX634705**

<b>Host</b>	Mouse
<b>Clonality</b>	Monoclonal
<b>Isotype</b>	IgG2a
<b>Application</b>	WB, IHC-P
<b>Reactivity</b>	Human, Mouse, Rat

**Package**  
100 µl, 25 µl

## APPLICATION

### Application Note

\*Optimal dilutions/concentrations should be determined by the researcher.

Suggested dilution	Recommended dilution
WB	1:500-1:3000
IHC-P	1:100-1:1000

Not tested in other applications.

**Calculated MW** 86 kDa. ( [Note](#) )

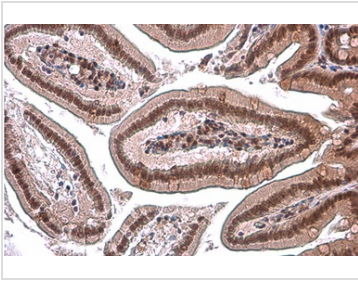
## PROPERTIES

<b>Form</b>	Liquid
<b>Buffer</b>	PBS
<b>Preservative</b>	No preservative
<b>Storage</b>	Store as concentrated solution. Centrifuge briefly prior to opening vial. For short-term storage (1-2 weeks), store at 4°C. For long-term storage, aliquot and store at -20°C or below. Avoid multiple freeze-thaw cycles.
<b>Concentration</b>	2.21 mg/ml (Please refer to the vial label for the specific concentration.)
<b>Immunogen</b>	Recombinant protein encompassing a sequence within the N-terminus region of human Glucocorticoid receptor. The exact sequence is proprietary.
<b>Purification</b>	Affinity purified by Protein A.
<b>Conjugation</b>	Unconjugated
<b>Note</b>	For laboratory research use only. Not for any clinical, therapeutic, or diagnostic use in humans or animals. Not for animal or human consumption.  Purchasers shall not, and agree not to enable third parties to, analyze, copy, reverse engineer or otherwise attempt to determine the structure or sequence of the product.



For full product information, images and publications, please visit our [website](#).

## DATA IMAGES



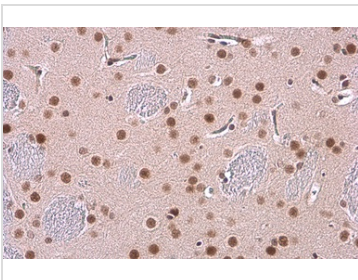
### GTX634705 IHC-P Image

Glucocorticoid Receptor antibody [GT1073] detects Glucocorticoid Receptor protein at nucleus by immunohistochemical analysis.

Sample: Paraffin-embedded mouse intestine.

Glucocorticoid Receptor stained by Glucocorticoid Receptor antibody [GT1073] (GTX634705) diluted at 1:1000.

Antigen Retrieval: Citrate buffer, pH 6.0, 15 min



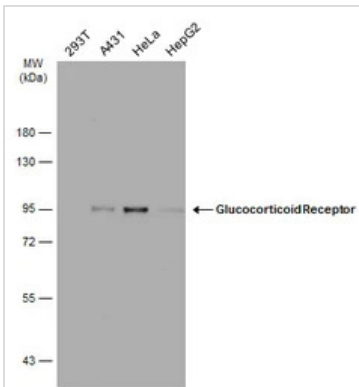
### GTX634705 IHC-P Image

Glucocorticoid Receptor antibody [GT1073] detects Glucocorticoid Receptor protein at nucleus by immunohistochemical analysis.

Sample: Paraffin-embedded rat brain.

Glucocorticoid Receptor stained by Glucocorticoid Receptor antibody [GT1073] (GTX634705) diluted at 1:1000.

Antigen Retrieval: Citrate buffer, pH 6.0, 15 min



### GTX634705 WB Image

Various whole cell extracts (30 µg) were separated by 7.5% SDS-PAGE, and the membrane was blotted with Glucocorticoid Receptor antibody [GT1073] (GTX634705) diluted at 1:1000. The HRP-conjugated anti-mouse IgG antibody (GTX213111-01) was used to detect the primary antibody.



For full product information, images and publications, please visit our [website](https://www.genetex.com).