

## NCAM antibody [GT135]

Cat. No. GTX634792

Host	Mouse
Clonality	Monoclonal
Isotype	IgG1
Applications	WB, ICC/IF, IHC-P, IHC-Fr
Reactivity	Human, Mouse, Rat

References ( 1 )

Package

100 µl, 25 µl

## Applications

## Application Note

\*Optimal dilutions/concentrations should be determined by the researcher.

Suggested dilution	Recommended dilution
WB	1:1000-1:10000
ICC/IF	1:100-1:1000
IHC-P	1:100-1:1000
IHC-Fr	Assay dependent

Not tested in other applications.

Observed MW (kDa)	120-250 kDa.
Product Note	This antibody was raised against mouse NCAM Intracellular domain.

## Properties

Form	Liquid
Buffer	PBS
Preservative	No preservative
Storage	Store as concentrated solution. Centrifuge briefly prior to opening vial. For short-term storage (1-2 weeks), store at 4°C. For long-term storage, aliquot and store at -20°C or below. Avoid multiple freeze-thaw cycles.
Concentration	1.07 mg/ml (Please refer to the vial label for the specific concentration.)
Immunogen	Recombinant protein encompassing a sequence within the Intracellular domain of mouse NCAM. The exact sequence is proprietary.
Purification	Affinity purified by Protein G.
Conjugation	Unconjugated

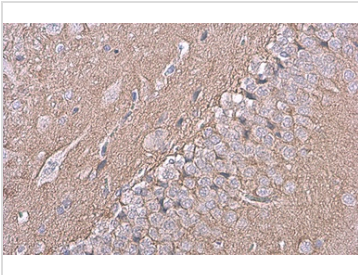


For full product information, images and publications, please visit our [website](#).

For laboratory research use only. Not for any clinical, therapeutic, or diagnostic use in humans or animals. Not for animal or human consumption.

**Note**

Purchasers shall not, and agree not to enable third parties to, analyze, copy, reverse engineer or otherwise attempt to determine the structure or sequence of the product.

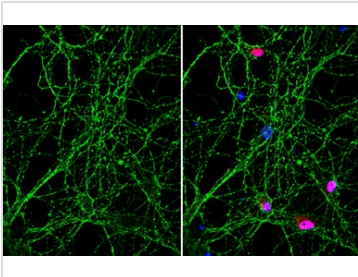
**DATA IMAGES**

**GTX634792 IHC-P Image**

NCAM antibody [GT135] detects NCAM protein at cell membrane by immunohistochemical analysis.

Sample: Paraffin-embedded rat brain.

NCAM stained by NCAM antibody [GT135] (GTX634792) diluted at 1:400.

Antigen Retrieval: Citrate buffer, pH 6.0, 15 min


**GTX634792 ICC/IF Image**

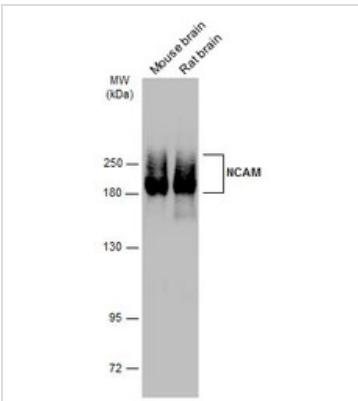
NCAM antibody [GT135] detects NCAM protein by immunofluorescent analysis.

Sample: DIV9 rat E18 primary hippocampal neuron cells were fixed in 4% paraformaldehyde at RT for 15 min.

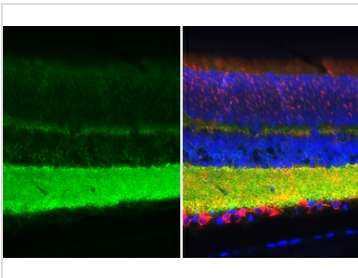
Green: NCAM stained by NCAM antibody [GT135] (GTX634792) diluted at 1:500.

Red: NeuN, stained by NeuN antibody (GTX132974) diluted at 1:1000.

Blue: Fluoroshield with DAPI (GTX30920).


**GTX634792 WB Image**

Various tissue extracts (50 µg) were separated by 5% SDS-PAGE, and the membrane was blotted with NCAM antibody [GT135] (GTX634792) diluted at 1:5000. The HRP-conjugated anti-mouse IgG antibody (GTX213111-01) was used to detect the primary antibody, and the signal was developed with Trident ECL plus-Enhanced.


**GTX634792 IHC-P Image**

NCAM antibody [GT135] detects NCAM protein by immunohistochemical analysis.

Sample: Paraffin-embedded mouse eye.

Green: NCAM stained by NCAM antibody [GT135] (GTX634792) diluted at 1:250.

Red: beta Tubulin 3/ Tuj1 stained by beta Tubulin 3/ Tuj1 antibody (GTX130245) diluted at 1:250.

Blue: Fluoroshield with DAPI (GTX30920).

Antigen Retrieval: Citrate buffer, pH 6.0, 15 min



For full product information, images and publications, please visit our [website](https://www.genetex.com).