

NCAM antibody [GT249]

Cat. No. GTX634807

Host	Mouse
Clonality	Monoclonal
Isotype	IgG1
Applications	WB, ICC/IF, IHC-P
Reactivity	Mouse, Rat

Package
100 µl, 25 µl

Applications

Application Note

*Optimal dilutions/concentrations should be determined by the researcher.

Suggested dilution	Recommended dilution
WB	1:500-1:3000
ICC/IF	1:100-1:1000
IHC-P	1:100-1:1000

Not tested in other applications.

Observed MW (kDa) 95-250 kDa.

Product Note This antibody was raised against mouse NCAM Intracellular domain.

Properties

Form	Liquid
Buffer	PBS
Preservative	No preservatives
Storage	Store as concentrated solution. Centrifuge briefly prior to opening vial. For short-term storage (1-2 weeks), store at 4°C. For long-term storage, aliquot and store at -20°C or below. Avoid multiple freeze-thaw cycles.
Concentration	2.16 mg/ml (Please refer to the vial label for the specific concentration.)
Immunogen	Recombinant protein encompassing a sequence within the Intracellular domain of mouse NCAM. The exact sequence is proprietary.
Purification	Affinity purified by Protein G.
Conjugation	Unconjugated



For full product information, images and publications, please visit our [website](#).

For laboratory research use only. Not for any clinical, therapeutic, or diagnostic use in humans or animals. Not for animal or human consumption.

Note

Purchasers shall not, and agree not to enable third parties to, analyze, copy, reverse engineer or otherwise attempt to determine the structure or sequence of the product.

DATA IMAGES



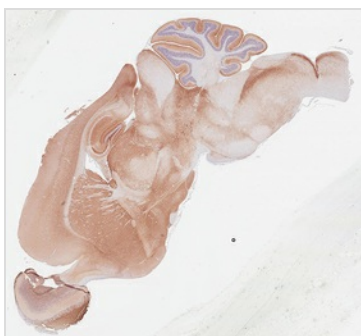
GTX634807 IHC-P Image

NCAM antibody [GT249] detects NCAM protein by immunohistochemical analysis.

Sample: Paraffin-embedded mouse hippocampus.

NCAM stained by NCAM antibody [GT249] (GTX634807) diluted at 1:1250.

Antigen Retrieval: Citrate buffer, pH 6.0, 15 min



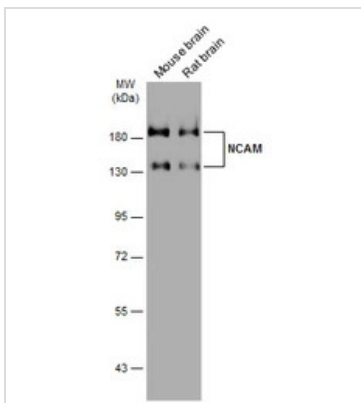
GTX634807 IHC-P Image

NCAM antibody [GT249] detects NCAM protein by immunohistochemical analysis.

Sample: Paraffin-embedded mouse brain.

NCAM stained by NCAM antibody [GT249] (GTX634807) diluted at 1:1250.

Antigen Retrieval: Citrate buffer, pH 6.0, 15 min



GTX634807 WB Image

Various tissue extracts (50 µg) were separated by 7.5% SDS-PAGE, and the membrane was blotted with NCAM antibody [GT249] (GTX634807) diluted at 1:1000. The HRP-conjugated anti-mouse IgG antibody (GTX213111-01) was used to detect the primary antibody.



For full product information, images and publications, please visit our [website](https://www.genetex.com).