

VAMP2 antibody [GT766]

Cat. No. GTX634829

Host	Mouse
Clonality	Monoclonal
Isotype	IgG2a
Application	WB, ICC/IF, IHC-P
Reactivity	Mouse, Rat

Package
100 µl, 25 µl

APPLICATION

Application Note

*Optimal dilutions/concentrations should be determined by the researcher.

Suggested dilution	Recommended dilution
WB	1:1000
ICC/IF	Assay dependent
IHC-P	Assay dependent

Not tested in other applications.

Calculated MW 13 kDa. ([Note](#))

PROPERTIES

Form	Liquid
Buffer	PBS, 20% Glycerol
Preservative	No Preservative
Storage	Store as concentrated solution. Centrifuge briefly prior to opening vial. For short-term storage (1-2 weeks), store at 4°C. For long-term storage, aliquot and store at -20°C or below. Avoid multiple freeze-thaw cycles.
Concentration	1 mg/ml (Please refer to the vial label for the specific concentration.)
Immunogen	full length human VAMP2 recombinant protein.
Purification	Affinity purified by Protein A.
Conjugation	Unconjugated

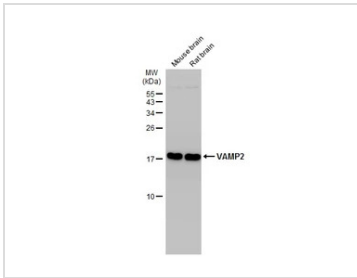
Note

For laboratory research use only. Not for any clinical, therapeutic, or diagnostic use in humans or animals. Not for animal or human consumption.

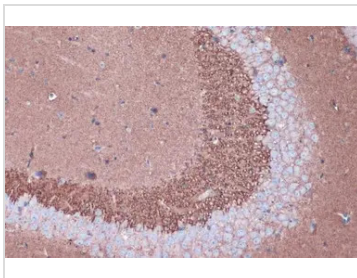
Purchasers shall not, and agree not to enable third parties to, analyze, copy, reverse engineer or otherwise attempt to determine the structure or sequence of the product.



For full product information, images and publications, please visit our [website](#).

DATA IMAGES

GTX634829 WB Image

Various tissue extracts (50 µg) were separated by 15% SDS-PAGE, and the membrane was blotted with VAMP2 antibody [GT766] (GTX634829) diluted at 1:1000. The HRP-conjugated anti-mouse IgG antibody (GTX213111-01) was used to detect the primary antibody.

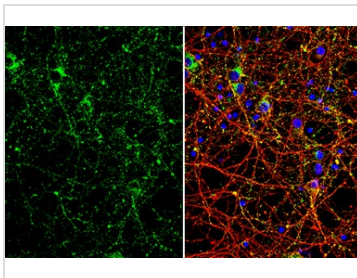

GTX634829 IHC-P Image

VAMP2 antibody [GT766] detects VAMP2 protein at cell membrane and cytoplasm by immunohistochemical analysis.

Sample: Paraffin-embedded mouse brain.

VAMP2 stained by VAMP2 antibody [GT766] (GTX634829) diluted at 1:500.

Antigen Retrieval: Citrate buffer, pH 6.0, 15 min


GTX634829 ICC/IF Image

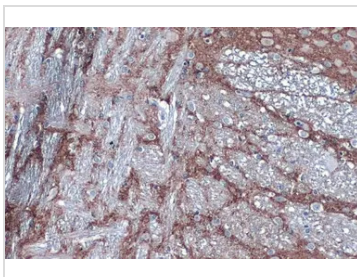
VAMP2 antibody [GT766] detects VAMP2 protein by immunofluorescent analysis.

Sample: DIV10 rat E18 primary cortical neuron cells were fixed in 4% paraformaldehyde at RT for 15 min.

Green: VAMP2 stained by VAMP2 antibody [GT766] (GTX634829) diluted at 1:500.

Red: Tau, stained by Tau antibody (GTX130462) diluted at 1:500.

Blue: Fluoroshield with DAPI (GTX30920).


GTX634829 IHC-P Image

VAMP2 antibody [GT766] detects VAMP2 protein at cell membrane and cytoplasm by immunohistochemical analysis.

Sample: Paraffin-embedded rat brain.

VAMP2 stained by VAMP2 antibody [GT766] (GTX634829) diluted at 1:500.

Antigen Retrieval: Citrate buffer, pH 6.0, 15 min



For full product information, images and publications, please visit our [website](https://www.genetex.com).