

## Park7 / DJ-1 antibody [GT136]

Cat. No. GTX634831

|             |                   |
|-------------|-------------------|
| Host        | Mouse             |
| Clonality   | Monoclonal        |
| Isotype     | IgG1              |
| Application | WB, ICC/IF        |
| Reactivity  | Human, Mouse, Rat |

Package  
100 µl, 25 µl

## APPLICATION

## Application Note

\*Optimal dilutions/concentrations should be determined by the researcher.

| Suggested dilution | Recommended dilution |
|--------------------|----------------------|
| WB                 | 1:5000-1:20000       |
| ICC/IF             | 1:100-1:1000         |

Not tested in other applications.

Calculated MW 20 kDa. ( [Note](#) )

## PROPERTIES

|               |  |
|---------------|--|
| Form          | Liquid   |
| Buffer        | PBS  |
| Preservative  | No preservative  |
| Storage       | Store as concentrated solution. Centrifuge briefly prior to opening vial. For short-term storage (1-2 weeks), store at 4°C. For long-term storage, aliquot and store at -20°C or below. Avoid multiple freeze-thaw cycles. |
| Concentration | 2 mg/ml (Please refer to the vial label for the specific concentration.)   |
| Immunogen     | Full length human Park7 / DJ-1 recombinant protein.  |
| Purification  | Affinity purified by Protein G.  |
| Conjugation   | Unconjugated   |

## Note

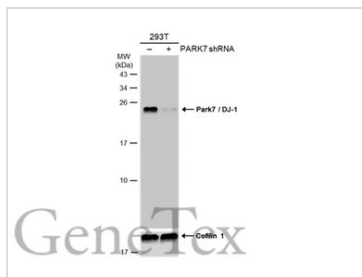
For laboratory research use only. Not for any clinical, therapeutic, or diagnostic use in humans or animals. Not for animal or human consumption.

Purchasers shall not, and agree not to enable third parties to, analyze, copy, reverse engineer or otherwise attempt to determine the structure or sequence of the product.

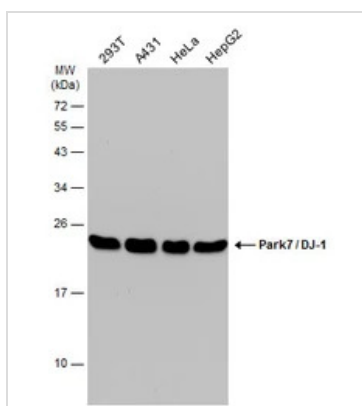


For full product information, images and publications, please visit our [website](#).

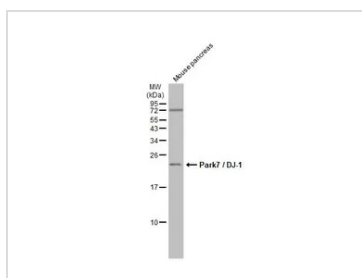
## DATA IMAGES


**GTx634831 WB Image**

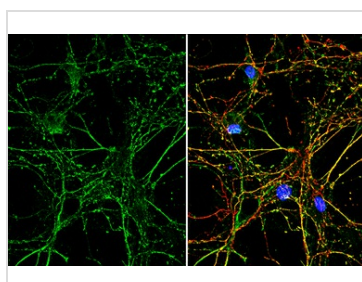
293T whole cell extracts (30 µg) were separated by 15% SDS-PAGE, and the membrane was blotted with Park7 / DJ-1 antibody [GT136] (GTx634831) diluted at 1:10000. The HRP-conjugated anti-mouse IgG antibody (GTx213111-01) was used to detect the primary antibody.


**GTx634831 WB Image**

Various whole cell extracts (30 µg) were separated by 12% SDS-PAGE, and the membrane was blotted with Park7 / DJ-1 antibody [GT136] (GTx634831) diluted at 1:1000. The HRP-conjugated anti-mouse IgG antibody (GTx213111-01) was used to detect the primary antibody.


**GTx634831 WB Image**

Mouse tissue extract (50 µg) was separated by 15% SDS-PAGE, and the membrane was blotted with Park7 / DJ-1 antibody [GT136] (GTx634831) diluted at 1:1000. The HRP-conjugated anti-mouse IgG antibody (GTx213111-01) was used to detect the primary antibody, and the signal was developed with Trident ECL plus-Enhanced.


**GTx634831 ICC/IF Image**

Park7 / DJ-1 antibody [GT136] detects Park7 / DJ-1 protein by immunofluorescent analysis. Sample: DIV9 rat E18 primary hippocampal neuron cells were fixed in 4% paraformaldehyde at RT for 15 min. Green: Park7 / DJ-1 stained by Park7 / DJ-1 antibody [GT136] (GTx634831) diluted at 1:500. Red: Tau, stained by Tau antibody (GTx112981) diluted at 1:500. Blue: Fluoroshield with DAPI (GTx30920).



For full product information, images and publications, please visit our [website](https://www.genetex.com).