

# Calbindin antibody [GT386]

**Cat. No. GTX634833**

<b>Host</b>	Mouse
<b>Clonality</b>	Monoclonal
<b>Isotype</b>	IgG2a
<b>Application</b>	WB, IHC-P, IHC (Free Floating)
<b>Reactivity</b>	Mouse, Rat

Reference ( 1 )

★★★★★ Review ( 3 )

Package

100 µl, 25 µl

## APPLICATION

### Application Note

\*Optimal dilutions/concentrations should be determined by the researcher.

Suggested dilution	Recommended dilution
WB	1:1000
IHC-P	Assay dependent
IHC (Free Floating)	Assay dependent

Not tested in other applications.

**Calculated MW** 30 kDa. ( [Note](#) )

## PROPERTIES

<b>Form</b>	Liquid
<b>Buffer</b>	PBS, 20% Glycerol
<b>Preservative</b>	No Preservative
<b>Storage</b>	Store as concentrated solution. Centrifuge briefly prior to opening vial. For short-term storage (1-2 weeks), store at 4°C. For long-term storage, we recommend adding 50% glycerol, then aliquot and store at -20°C or below. Avoid multiple freeze-thaw cycles.
<b>Concentration</b>	1 mg/ml (Please refer to the vial label for the specific concentration.)
<b>Immunogen</b>	Recombinant protein encompassing a sequence within the N-terminus region of human Calbindin. The exact sequence is proprietary.
<b>Purification</b>	Affinity purified by Protein A.
<b>Conjugation</b>	Unconjugated

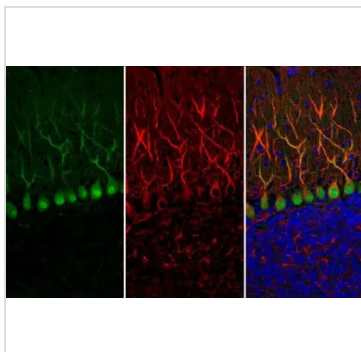


For full product information, images and publications, please visit our [website](#).

For laboratory research use only. Not for any clinical, therapeutic, or diagnostic use in humans or animals. Not for animal or human consumption.

**Note**

Purchasers shall not, and agree not to enable third parties to, analyze, copy, reverse engineer or otherwise attempt to determine the structure or sequence of the product.

**DATA IMAGES**

**GTX634833 IHC-P Image**

Calbindin antibody [GT386] detects Calbindin protein at cytoplasm and nucleus by immunohistochemical analysis.

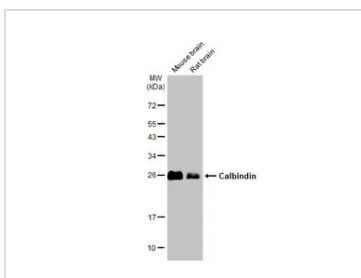
Sample: Paraffin-embedded mouse cerebellum.

Green: Calbindin stained by Calbindin antibody [GT386] (GTX634833) diluted at 1:250.

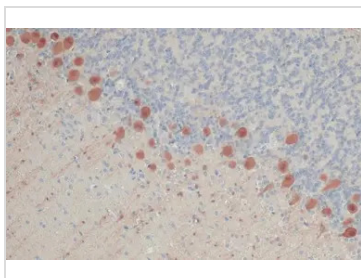
Red: beta Tubulin 3/ Tuj1, a Cytoskeleton marker, stained by beta Tubulin 3/ Tuj1 antibody (GTX130245) diluted at 1:250.

Blue: Fluoroshield with DAPI (GTX30920).

Antigen Retrieval: Citrate buffer, pH 6.0, 15 min


**GTX634833 WB Image**

Various tissue extracts (50 µg) were separated by 12% SDS-PAGE, and the membrane was blotted with Calbindin antibody [GT386] (GTX634833) diluted at 1:1000. The HRP-conjugated anti-mouse IgG antibody (GTX213111-01) was used to detect the primary antibody.

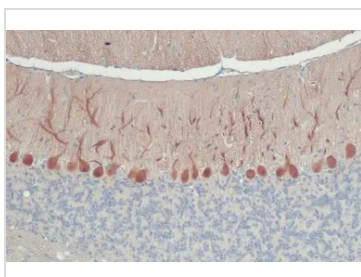

**GTX634833 IHC-P Image**

Calbindin antibody [GT386] detects Calbindin protein at cytoplasm and nucleus by immunohistochemical analysis.

Sample: Paraffin-embedded rat cerebellum.

Calbindin stained by Calbindin antibody [GT386] (GTX634833) diluted at 1:200.

Antigen Retrieval: Citrate buffer, pH 6.0, 15 min


**GTX634833 IHC-P Image**

Calbindin antibody [GT386] detects Calbindin protein at cytoplasm and nucleus by immunohistochemical analysis.

Sample: Paraffin-embedded mouse cerebellum.

Calbindin stained by Calbindin antibody [GT386] (GTX634833) diluted at 1:200.

Antigen Retrieval: Citrate buffer, pH 6.0, 15 min



For full product information, images and publications, please visit our [website](https://www.genetex.com).