

PAX6 antibody [GT9412]

Cat. No. GTX634863

| | |
|-------------|-------------------|
| Host | Mouse |
| Clonality | Monoclonal |
| Isotype | IgG1 |
| Application | WB, ICC/IF, IHC-P |
| Reactivity | Human, Mouse, Rat |

Reference (2)

Package

100 µl, 25 µl

APPLICATION

Application Note

*Optimal dilutions/concentrations should be determined by the researcher.

| Suggested dilution | Recommended dilution |
|--------------------|----------------------|
| WB | 1:1000 |
| ICC/IF | Assay dependent |
| IHC-P | Assay dependent |

Not tested in other applications.

Calculated MW 47 kDa. ([Note](#))

PROPERTIES

| | |
|---------------|---|
| Form | Liquid |
| Buffer | PBS, 20% Glycerol |
| Preservative | No Preservative |
| Storage | Store as concentrated solution. Centrifuge briefly prior to opening vial. For short-term storage (1-2 weeks), store at 4°C. For long-term storage, we recommend adding 50% glycerol, then aliquot and store at -20°C or below. Avoid multiple freeze-thaw cycles. |
| Concentration | 1.42 mg/ml (Please refer to the vial label for the specific concentration.) |
| Immunogen | Recombinant protein encompassing a sequence within the center region of human PAX6. The exact sequence is proprietary. |
| Purification | Affinity purified by Protein G. |
| Conjugation | Unconjugated |

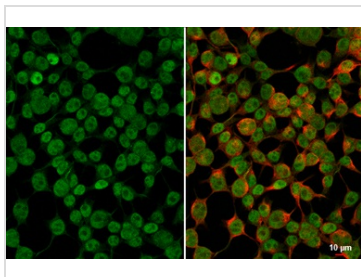
Note

For laboratory research use only. Not for any clinical, therapeutic, or diagnostic use in humans or animals. Not for animal or human consumption.

Purchasers shall not, and agree not to enable third parties to, analyze, copy, reverse engineer or otherwise attempt to determine the structure or sequence of the product.



For full product information, images and publications, please visit our [website](#).

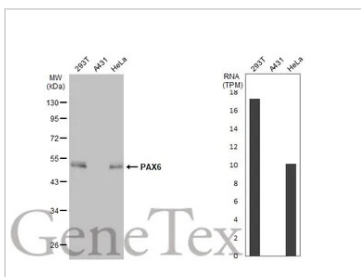
DATA IMAGES

GTx634863 ICC/IF Image

PAX6 antibody [GT9412] detects PAX6 protein at nucleus by immunofluorescent analysis.

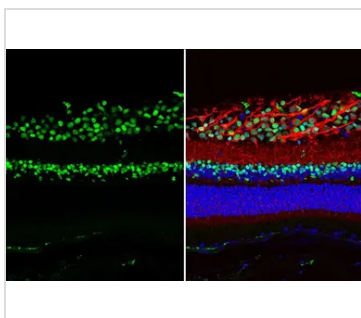
Sample: 293T cells were fixed in 4% paraformaldehyde at RT for 15 min.

Green: PAX6 stained by PAX6 antibody [GT9412] (GTx634863) diluted at 1:500.

Red: beta Tubulin, a cytoskeleton marker, stained by beta Tubulin antibody (GTx101279) diluted at 1:1000.


GTx634863 WB Image

Various whole cell extracts (30 µg) were separated by 10% SDS-PAGE, and the membrane was blotted with PAX6 antibody [GT9412] (GTx634863) diluted at 1:1000. The HRP-conjugated anti-mouse IgG antibody (GTx213111-01) was used to detect the primary antibody, and the signal was developed with Trident ECL plus-Enhanced. Corresponding RNA expression data for the same cell lines are based on Human Protein Atlas program.


GTx634863 IHC-P Image

PAX6 antibody [GT9412] detects PAX6 protein at nucleus by immunohistochemical analysis.

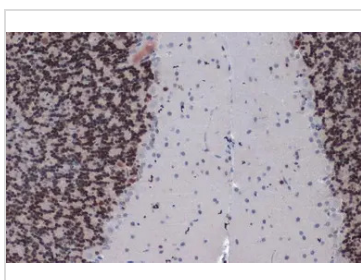
Sample: Paraffin-embedded mouse eye.

Green: PAX6 stained by PAX6 antibody [GT9412] (GTx634863) diluted at 1:500.

Red: beta Tubulin 3/ Tuj1, a cytoskeleton marker, stained by beta Tubulin 3/ Tuj1 antibody (GTx130245) diluted at 1:250.

Blue: Fluoroshield with DAPI (GTx30920).

Antigen Retrieval: Citrate buffer, pH 6.0, 15 min


GTx634863 IHC-P Image

PAX6 antibody [GT9412] detects PAX6 protein at nucleus by immunohistochemical analysis.

Sample: Paraffin-embedded rat cerebellum.

PAX6 stained by PAX6 antibody [GT9412] (GTx634863) diluted at 1:500.

Antigen Retrieval: Citrate buffer, pH 6.0, 15 min



For full product information, images and publications, please visit our [website](https://www.genetex.com).