

# Vimentin antibody [GT7812] - VetSignal

**Cat. No. GTX635085**

<b>Host</b>	Mouse
<b>Clonality</b>	Monoclonal
<b>Isotype</b>	IgG2a
<b>Applications</b>	WB, ICC/IF, IHC-P
<b>Reactivity</b>	Cat, Dog

**Package**  
100 µl

## Applications

### Application Note

\*Optimal dilutions/concentrations should be determined by the researcher.

Suggested dilution	Recommended dilution
WB	1:1000-1:10000
ICC/IF	Assay dependent
IHC-P	1:100-1:1000

Not tested in other applications.

## Properties

<b>Form</b>	Liquid
<b>Buffer</b>	PBS
<b>Preservative</b>	No Preservative
<b>Storage</b>	Store as concentrated solution. Centrifuge briefly prior to opening vial. For short-term storage (1-2 weeks), store at 4°C. For long-term storage, aliquot and store at -20°C or below. Avoid multiple freeze-thaw cycles.
<b>Concentration</b>	0.64 mg/ml (Please refer to the vial label for the specific concentration.)
<b>Immunogen</b>	Recombinant protein corresponding to dog Vimentin.
<b>Purification</b>	Affinity purified by Protein G.
<b>Conjugation</b>	Unconjugated

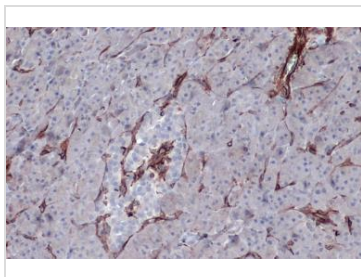
### Note

For laboratory research use only. Not for any clinical, therapeutic, or diagnostic use in humans or animals. Not for animal or human consumption.

Purchasers shall not, and agree not to enable third parties to, analyze, copy, reverse engineer or otherwise attempt to determine the structure or sequence of the product.



For full product information, images and publications, please visit our [website](#).

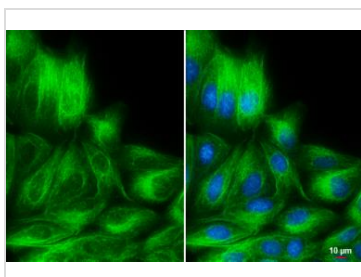
**DATA IMAGES**

**GTX635085 IHC-P Image**

Vimentin antibody [GT7812] detects Vimentin protein by immunohistochemical analysis.

Sample: Paraffin-embedded dog pancreas.

Vimentin stained by Vimentin antibody [GT7812] (GTX635085) diluted at 1:200.

Antigen Retrieval: Citrate buffer, pH 6.0, 15 min


**GTX635085 ICC/IF Image**

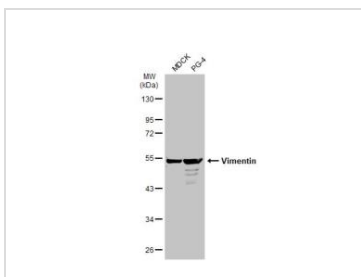
Vimentin antibody [GT7812] detects Vimentin protein at cytoskeleton by immunofluorescent analysis.

Sample: MDCK cells were fixed in 4% paraformaldehyde at RT for 15 min.

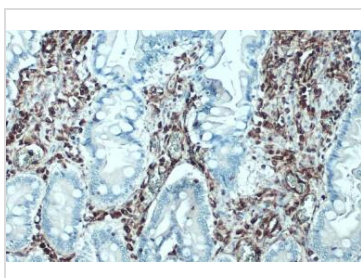
Green: Vimentin stained by Vimentin antibody [GT7812] (GTX635085) diluted at 1:100.

Blue: Hoechst 33342 staining.

Scale bar= 10 μm.


**GTX635085 WB Image**

Various whole cell extracts (30 μg) were separated by 10% SDS-PAGE, and the membrane was blotted with Vimentin antibody [GT7812] - VetSignal (GTX635085) diluted at 1:10000. The HRP-conjugated anti-mouse IgG antibody (GTX213111-01) was used to detect the primary antibody.

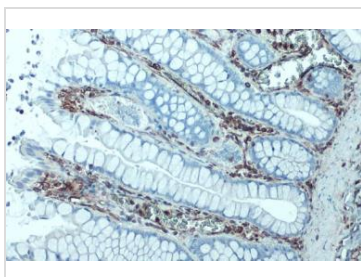

**GTX635085 IHC-P Image**

Vimentin antibody [GT7812] - VetSignal detects Vimentin protein at cytoplasm by immunohistochemical analysis.

Sample: Paraffin-embedded dog intestine.

Vimentin stained by Vimentin antibody [GT7812] - VetSignal (GTX635085) diluted at 1:200.

Antigen Retrieval: Citrate buffer, pH 6.0, 15 min


**GTX635085 IHC-P Image**

Vimentin antibody [GT7812] - VetSignal detects Vimentin protein at cytoplasm by immunohistochemical analysis.

Sample: Paraffin-embedded dog colon.

Vimentin stained by Vimentin antibody [GT7812] - VetSignal (GTX635085) diluted at 1:200.

Antigen Retrieval: Citrate buffer, pH 6.0, 15 min



For full product information, images and publications, please visit our [website](https://www.genetex.com).