

## Galectin 3 antibody [GT1473]

Cat. No. GTX635151

Host	Mouse
Clonality	Monoclonal
Isotype	IgG1
Applications	WB, IHC-P, ELISA, Sandwich ELISA
Reactivity	Human

Package  
100 µl, 25 µl

## Applications

## Application Note

\*Optimal dilutions/concentrations should be determined by the researcher.

Suggested dilution	Recommended dilution
WB	1:500-1:3000
IHC-P	1:100-1:1000
ELISA	Assay dependent
Sandwich ELISA	Assay dependent

**Note : Capture : GTX635151, Detection: GTX113486**

Not tested in other applications.

**Calculated MW** 26 kDa. ( [Note](#) )

## Properties

Form	Liquid
Buffer	PBS
Preservative	No preservatives
Storage	Store as concentrated solution. Centrifuge briefly prior to opening vial. For short-term storage (1-2 weeks), store at 4°C. For long-term storage, aliquot and store at -20°C or below. Avoid multiple freeze-thaw cycles.
Concentration	1.35 mg/ml (Please refer to the vial label for the specific concentration.)
Immunogen	Recombinant protein encompassing a sequence within the C-terminus region of human Galectin 3. The exact sequence is proprietary.
Purification	Affinity purified by Protein G. PBS
Conjugation	Unconjugated

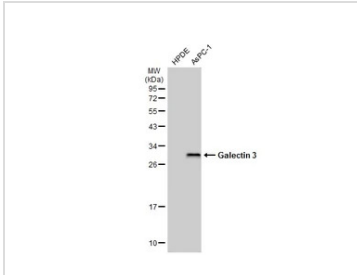


For full product information, images and publications, please visit our [website](#).

For laboratory research use only. Not for any clinical, therapeutic, or diagnostic use in humans or animals. Not for animal or human consumption.

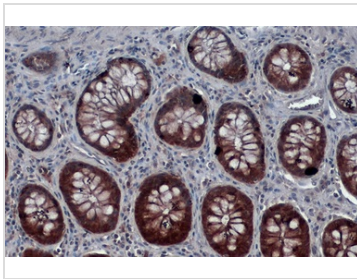
**Note**

Purchasers shall not, and agree not to enable third parties to, analyze, copy, reverse engineer or otherwise attempt to determine the structure or sequence of the product.

**DATA IMAGES**

**GTX635151 WB Image**

Various whole cell extracts (30 µg) were separated by 12% SDS-PAGE, and the membrane was blotted with Galectin 3 antibody [GT1473] (GTX635151) diluted at 1:1000. The HRP-conjugated anti-mouse IgG antibody (GTX213111-01) was used to detect the primary antibody.

The observed expression level is based on the publication: [PMID: 29274868](https://pubmed.ncbi.nlm.nih.gov/29274868/)

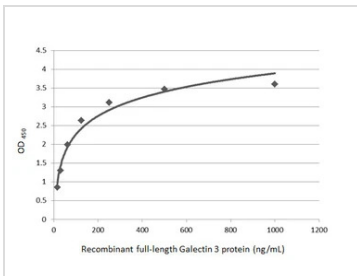

**GTX635151 IHC-P Image**

Galectin 3 antibody [GT1473] detects Galectin 3 protein by immunohistochemical analysis.

Sample: Paraffin-embedded human colon.

Galectin 3 stained by Galectin 3 antibody [GT1473] (GTX635151) diluted at 1:200.

Antigen Retrieval: Citrate buffer, pH 6.0, 15 min


**GTX635151 ELISA Image**

Sandwich ELISA detection of recombinant full-length Galectin 3 protein using GTX635151 as capture antibody at concentration of 5 µg/mL and GTX113486 as detection antibody at concentration of 1 µg/mL. Rabbit IgG antibody (HRP) (GTX213110-01) was diluted at 1:10000 and used to detect the primary antibody.



For full product information, images and publications, please visit our [website](https://www.genetex.com).