

DAG1 / beta Dystroglycan antibody [GT9112]

Cat. No. GTX635178

Host	Mouse
Clonality	Monoclonal
Isotype	IgG1
Applications	WB, IHC-P
Reactivity	Human, Mouse

Package
100 µl, 25 µl

Applications

Application Note

*Optimal dilutions/concentrations should be determined by the researcher.

Suggested dilution	Recommended dilution
WB	1:500-1:3000
IHC-P	1:100-1:1000

Not tested in other applications.

Calculated MW 97 kDa. ([Note](#))

Product Note This antibody was raised against human DAG1 / beta Dystroglycan Extracellular domain.

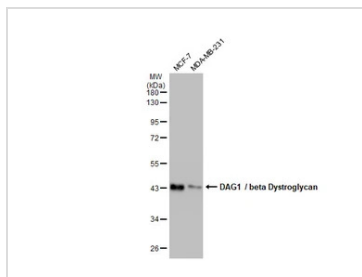
Properties

Form	Liquid
Buffer	PBS, 20% Glycerol
Preservative	No preservatives
Storage	Store as concentrated solution. Centrifuge briefly prior to opening vial. For short-term storage (1-2 weeks), store at 4°C. For long-term storage, aliquot and store at -20°C or below. Avoid multiple freeze-thaw cycles.
Concentration	1 mg/ml (Please refer to the vial label for the specific concentration.)
Immunogen	Recombinant protein encompassing a sequence within the Extracellular domain of human DAG1 / beta Dystroglycan. The exact sequence is proprietary.
Purification	Affinity purified by Protein G.
Conjugation	Unconjugated
Note	For laboratory use only. Not for any clinical, therapeutic, or diagnostic use in humans or animals. Not for animal or human consumption.



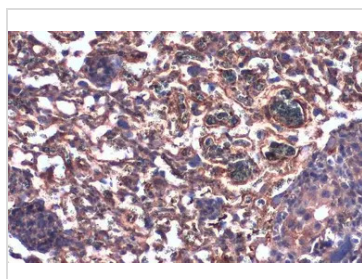
For full product information, images and publications, please visit our [website](#).

DATA IMAGES



GTX635178 WB Image

Various whole cell extracts (30 µg) were separated by 10% SDS-PAGE, and the membrane was blotted with DAG1 / beta Dystroglycan antibody [GT9112] (GTX635178) diluted at 1:500. The HRP-conjugated anti-mouse IgG antibody (GTX213111-01) was used to detect the primary antibody.



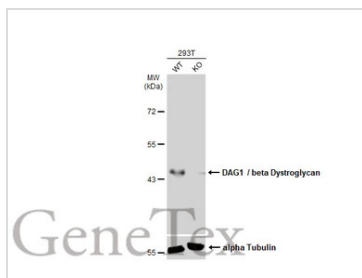
GTX635178 IHC-P Image

DAG1 / beta Dystroglycan antibody [GT9112] detects DAG1 / beta Dystroglycan protein at cell membrane and cytoplasm by immunohistochemical analysis.

Sample: Paraffin-embedded mouse placenta.

DAG1 / beta Dystroglycan stained by DAG1 / beta Dystroglycan antibody [GT9112] (GTX635178) diluted at 1:200.

Antigen Retrieval: Citrate buffer, pH 6.0, 15 min



GTX635178 WB Image

Wild-type (WT) and DAG1 / beta Dystroglycan knockout (KO) 293T cell extracts (30 µg) were separated by 10% SDS-PAGE, and the membrane was blotted with DAG1 / beta Dystroglycan antibody [GT9112] (GTX635178) diluted at 1:500. The HRP-conjugated anti-mouse IgG antibody (GTX213111-01) was used to detect the primary antibody.



For full product information, images and publications, please visit our [website](https://www.genetex.com).