

RAS (G12D Mutant) antibody [HL10]

Cat. No. GTX635362

Host	Rabbit
Clonality	Monoclonal
Isotype	IgG
Application	WB, ICC/IF, IHC-P
Reactivity	Human, Mouse

Reference (3)

★★★★★ Review (5)

Package

100 µl, 25 µl

PRODUCT

Summary

KRAS has the distinction of being a preminent oncoprotein as it is mutated in more than 85% of RAS-altered cancers. The RAS (G12D Mutant) antibody [HL10] is the first commercially available recombinant antibody that demonstrates exceptional specificity by paraffin-embedded immunohistochemistry and western blot for the RAS G12D mutant protein.

APPLICATION

Application Note

*Optimal dilutions/concentrations should be determined by the researcher.

Suggested dilution	Recommended dilution
WB	1:500-1:3000
ICC/IF	Assay dependent
IHC-P	1:25-1:100

Note : Suggest using high sensitivity ECL for optimization. GTX14698 Trident femto Western HRP Substrate is recommended.

Not tested in other applications.

PROPERTIES

Form	Liquid
Buffer	PBS
Preservative	No preservative
Storage	Store as concentrated solution. Centrifuge briefly prior to opening vial. For short-term storage (1-2 weeks), store at 4°C. For long-term storage, aliquot and store at -20°C or below. Avoid multiple freeze-thaw cycles.
Concentration	1.5 mg/ml (Please refer to the vial label for the specific concentration.)
Immunogen	Carrier-protein conjugated synthetic peptide surrounding mutant G12D of human K-Ras. The exact sequence is proprietary.
Purification	Affinity purified by Protein A.
Conjugation	Unconjugated

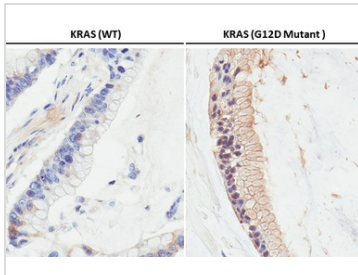


For full product information, images and publications, please visit our [website](#).

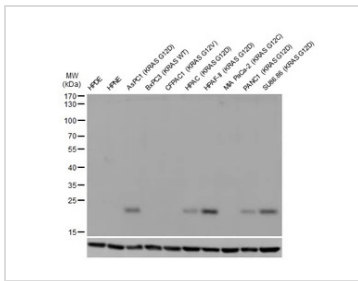
For laboratory research use only. Not for any clinical, therapeutic, or diagnostic use in humans or animals. Not for animal or human consumption.

Note

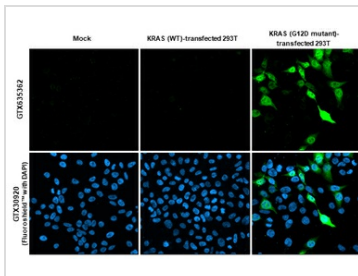
Purchasers shall not, and agree not to enable third parties to, analyze, copy, reverse engineer or otherwise attempt to determine the structure or sequence of the product.

DATA IMAGES

GTX635362 IHC-P Image

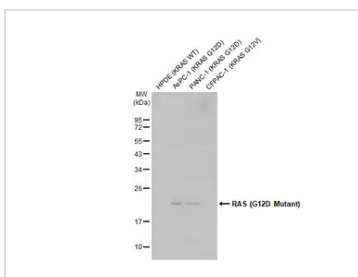
RAS (G12D Mutant) antibody [HL10] detects RAS (G12D Mutant) protein by immunohistochemical analysis. Sample: Paraffin-embedded human wild-type (left) and KRAS G12D mutant (right) pancreatic tumor. RAS (G12D Mutant) stained by RAS (G12D Mutant) antibody [HL10] (GTX635362) diluted at 1:50.


GTX635362 WB Image

Various whole cell extracts were separated by SDS-PAGE, and the membrane was blotted with RAS (G12D Mutant) antibody [HL10] (GTX635362) diluted at 1:1000.


GTX635362 ICC/IF Image

RAS (G12D Mutant) antibody [HL10] detects RAS (G12D Mutant) protein by immunofluorescent analysis. Sample: Mock and transfected 293T cells were fixed in 4% paraformaldehyde at RT for 15 min. Green: RAS (G12D Mutant) stained by RAS (G12D Mutant) antibody [HL10] (GTX635362) diluted at 1:500. Blue: Fluoroshield with DAPI (GTX30920).


GTX635362 WB Image

Various whole cell extracts (30 µg) were separated by 12% SDS-PAGE, and the membrane was blotted with RAS (G12D Mutant) antibody [HL10] (GTX635362) diluted at 1:1000. The HRP-conjugated anti-rabbit IgG antibody (GTX213110-01) was used to detect the primary antibody.



For full product information, images and publications, please visit our [website](https://www.genetex.com).