

Iba1 antibody [HL22]

Cat. No. GTX635363

Host	Rabbit
Clonality	Monoclonal
Isotype	IgG
Applications	WB, ICC/IF, IHC-P, IHC-Fr, IHC (Free Floating)
Reactivity	Human, Mouse, Rat, Pig

References (21)

★★★★★ Review (4)

Package

100 µl, 25 µl

PRODUCT

Summary

Iba1 antibody detects Iba1, a protein widely used by neuroscientists as a microglial marker and to gauge microglial activation. It is also expressed in macrophages. Discrimination between these two cell populations can be achieved via double staining with TMEM119 antibody (GTX134087), another useful microglia-specific marker, by identifying brain-residing microglia as Iba1+/TMEM119+ while CNS-infiltrating macrophages are Iba1+/TMEM119-.

Applications

Application Note

*Optimal dilutions/concentrations should be determined by the researcher.

Suggested dilution	Recommended dilution
WB	1:500-1:3000
ICC/IF	Assay dependent
IHC-P	1:100-1:1000
IHC-Fr	1:100-1:1000
IHC (Free Floating)	Assay dependent

Not tested in other applications.

Observed MW (kDa) 17 kDa.

Properties

Form	Liquid
Buffer	PBS
Preservative	No preservatives
Storage	Store as concentrated solution. Centrifuge briefly prior to opening vial. For short-term storage (1-2 weeks), store at 4°C. For long-term storage, aliquot and store at -20°C or below. Avoid multiple freeze-thaw cycles.
Concentration	1 mg/ml (Please refer to the vial label for the specific concentration.)
Immunogen	Carrier-protein conjugated synthetic peptide encompassing a sequence within the C-terminus region of human Iba1. The exact sequence is proprietary.



For full product information, images and publications, please visit our [website](#).

Date 2025 / 08 / 21 Page 1 of 2

Purification Affinity purified by Protein A.

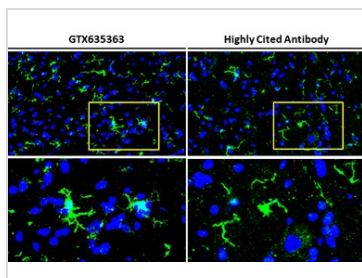
Conjugation Unconjugated

Note

For laboratory research use only. Not for any clinical, therapeutic, or diagnostic use in humans or animals. Not for animal or human consumption.

Purchasers shall not, and agree not to enable third parties to, analyze, copy, reverse engineer or otherwise attempt to determine the structure or sequence of the product.

DATA IMAGES



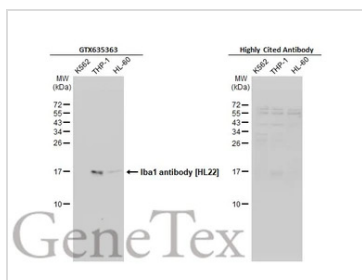
GTX635363 IHC-Fr Image

Iba1 antibody [HL22] detects Iba1 protein by immunohistochemical analysis.

Sample: Frozen-sectioned mouse spinal cord.

Green: Iba1 stained by Iba1 antibody [HL22] (GTX635363) diluted at 1:200.

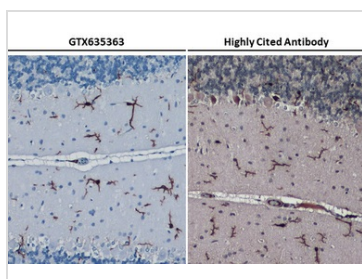
Blue: Fluoroshield with DAPI (GTX30920).



GTX635363 WB Image

Various whole cell extracts (30 µg) were separated by 15% SDS-PAGE, and the membranes were blotted with Iba1 antibody [HL22] (GTX635363) diluted at 1:1000 and competitor's antibody diluted at 1:1000. The HRP-conjugated anti-rabbit IgG antibody (GTX213110-01) was used to detect the primary antibody, and the signal was developed with Trident ECL plus-Enhanced.

*The competitor is not affiliated with GeneTex and does not endorse this product.



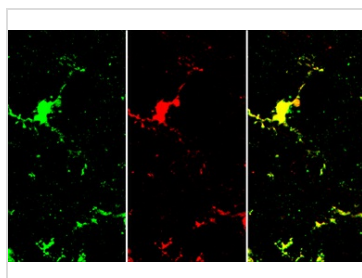
GTX635363 IHC-P Image

Iba1 antibody [HL22] detects Iba1 protein by immunohistochemical analysis.

Sample: Paraffin-embedded rat cerebellum.

Iba1 stained by Iba1 antibody [HL22] (GTX635363) diluted at 1:1000.

Antigen Retrieval: Citrate buffer, pH 6.0, 15 min



GTX635363 IHC-Fr Image

Iba1 antibody [HL22] detects Iba1 protein by immunohistochemical analysis.

Sample: Frozen-sectioned mouse brain.

Green: Iba1 stained by Iba1 antibody [HL22] (GTX635363) diluted at 1:100.

Red: Iba1 stained by Iba1 antibody [HL22-RT] (GTX635400) diluted at 1:100.

Blue: Fluoroshield with DAPI (GTX30920).



For full product information, images and publications, please visit our [website](https://www.genetex.com).