

CA19-9 antibody [GT174]

Cat. No. GTX635388

Host	Mouse
Clonality	Monoclonal
Isotype	IgG1
Applications	WB, ICC/IF, IHC-P, FCM, ELISA, Sandwich ELISA
Reactivity	Species independent

Package
100 µl, 25 µl

Applications

Application Note

*Optimal dilutions/concentrations should be determined by the researcher.

Suggested dilution	Recommended dilution
WB	1:1000
ICC/IF	Assay dependent
IHC-P	Assay dependent
FCM	Assay dependent
ELISA	Assay dependent
Sandwich ELISA	Assay dependent

Note : Capture: GTX635388, Detection: GTX635391 Please notice that GTX635391 needs to be conjugated to HRP to function as the detection antibody when paired with GTX635388. Please contact us for custom HRP-conjugated antibody.

Not tested in other applications.

Properties

Form	Liquid
Buffer	PBS, 20% Glycerol
Preservative	No preservatives
Storage	Store as concentrated solution. Centrifuge briefly prior to opening vial. For short-term storage (1-2 weeks), store at 4°C. For long-term storage, aliquot and store at -20°C or below. Avoid multiple freeze-thaw cycles.
Concentration	1 mg/ml (Please refer to the vial label for the specific concentration.)
Immunogen	The immunogen used to generate this antibody corresponds to CA19-9.
Purification	Affinity purified by Protein G.
Conjugation	Unconjugated

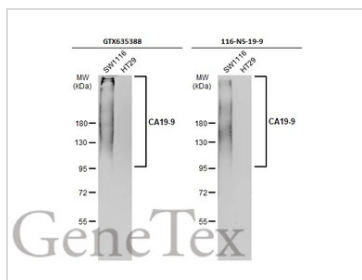


For full product information, images and publications, please visit our [website](#).

For laboratory research use only. Not for any clinical, therapeutic, or diagnostic use in humans or animals. Not for animal or human consumption.

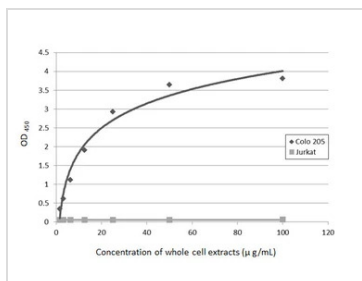
Note

Purchasers shall not, and agree not to enable third parties to, analyze, copy, reverse engineer or otherwise attempt to determine the structure or sequence of the product.

DATA IMAGES

GTx635388 WB Image

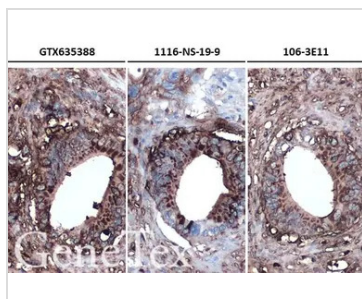
Various whole cell extracts (30 µg) were separated by 7.5% SDS-PAGE, and the membranes were blotted with CA19-9 antibody [GT174] (GTx635388) diluted at 1:1000 and competitor's antibody (MA5-12421) diluted at 1:250. The HRP-conjugated anti-mouse IgG antibody (GTx21311-01) was used to detect the primary antibody.

*The competitor is not affiliated with GeneTex and does not endorse this product.


GTx635388 ELISA Image

Sandwich ELISA detection of Colo 205 and Jurkat whole cell extracts using CA19-9 antibody [GT174] (GTx635388) as capture antibody at concentration of 5 µg/mL and HRP-conjugated Ca19-9 antibody [GT8510] (GTx635391) as detection antibody at concentration of 1 µg/mL.

Please notice that GTx635391 needs to be conjugated to HRP to function as the detection antibody when paired with GTx635388. Please contact us for custom HRP-conjugated antibody.


GTx635388 IHC-P Image

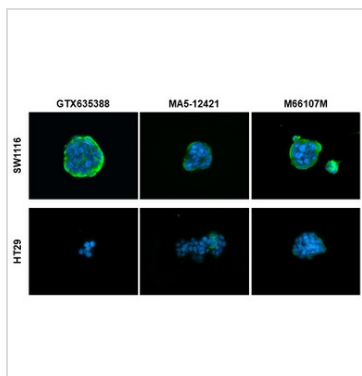
CA19-9 antibody [GT174] detects CA19-9 by immunohistochemical analysis.

Sample: Paraffin-embedded human pancreatic ductal adenocarcinoma.

CA19-9 stained by CA19-9 antibody [GT174] (GTx635388) diluted at 1:500 and competitor's antibody diluted at 1:250 (Company A) and 1:500 (Company B).

Antigen Retrieval: Citrate buffer, pH 6.0, 15 min

*Competitor's antibody is not affiliated with GeneTex and does not endorse this product.


GTx635388 ICC/IF Image

CA19-9 antibody [GT174] detects CA19-9 protein at cell membrane by immunofluorescent analysis.

Sample: SW1116 (high expression) and HT29 (low expression) cells were fixed in 4% paraformaldehyde at RT for 15 min.

Green: CA19-9 stained by CA19-9 antibody [GT174] (GTx635388) diluted at 1:1000 and competitor's antibody (MA5-12421 and M66107M) diluted at 1:1000.

Blue: Fluoroshield with DAPI (GTx30920).

*Competitor's antibody is not affiliated with GeneTex and does not endorse this product.

The observed expression level is based on the publication: [PMID: 10212226](https://pubmed.ncbi.nlm.nih.gov/10212226/)



For full product information, images and publications, please visit our [website](https://www.genetex.com).