

CA19-9 antibody [GT252]

Cat. No. GTX635390

Host	Mouse
Clonality	Monoclonal
Isotype	IgG1
Applications	WB, ICC/IF, IHC-P, FCM, ELISA, Sandwich ELISA
Reactivity	Species independent

Package
100 µl, 25 µl

Applications

Application Note

*Optimal dilutions/concentrations should be determined by the researcher.

Suggested dilution	Recommended dilution
WB	1:1000
ICC/IF	Assay dependent
IHC-P	Assay dependent
FCM	Assay dependent
ELISA	Assay dependent
Sandwich ELISA	Assay dependent

Note : Capture: GTX635390, Detection: GTX635391 Please notice that GTX635391 needs to be conjugated to HRP to function as the detection antibody when paired with GTX635390. Please contact us for custom HRP-conjugated antibody.

Not tested in other applications.

Properties

Form	Liquid
Buffer	PBS, 20% Glycerol
Preservative	No preservatives
Storage	Store as concentrated solution. Centrifuge briefly prior to opening vial. For short-term storage (1-2 weeks), store at 4°C. For long-term storage, aliquot and store at -20°C or below. Avoid multiple freeze-thaw cycles.
Concentration	1 mg/ml (Please refer to the vial label for the specific concentration.)
Immunogen	The immunogen used to generate this antibody corresponds to CA19-9.
Purification	Affinity purified by Protein G.
Conjugation	Unconjugated

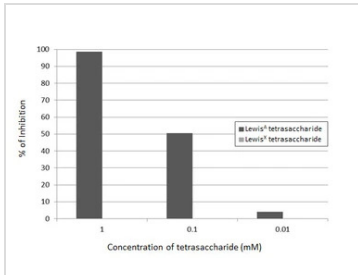


For full product information, images and publications, please visit our [website](#).

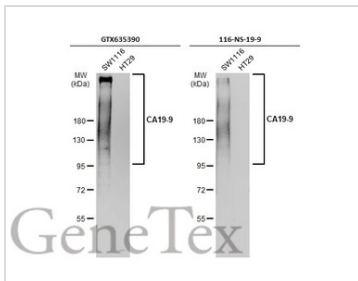
For laboratory research use only. Not for any clinical, therapeutic, or diagnostic use in humans or animals. Not for animal or human consumption.

Note

Purchasers shall not, and agree not to enable third parties to, analyze, copy, reverse engineer or otherwise attempt to determine the structure or sequence of the product.

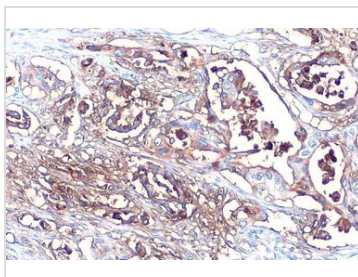
DATA IMAGES

GTX635390 ELISA Image

Competition analysis of CA 19-9 antibody [GT252] (GTX635390) (330 ng/mL) binding to immobilized recombinant HSA-CA 19-9 (coated at 3 µg/mL) in the presence of soluble Lewis^A or Lewis^X tetrasaccharides (1.0-0.01 mM). Bound antibody was detected by Goat Anti-Mouse IgG antibody (HRP) (GTX213111-01) (1:10000).


GTX635390 WB Image

Various whole cell extracts (30 µg) were separated by 7.5% SDS-PAGE, and the membranes were blotted with CA19-9 antibody [GT252] (GTX635390) diluted at 1:1000 and competitor's antibody (MA5-12421) diluted at 1:250. The HRP-conjugated anti-mouse IgG antibody (GTX213111-01) was used to detect the primary antibody.

*The competitor is not affiliated with GeneTex and does not endorse this product.

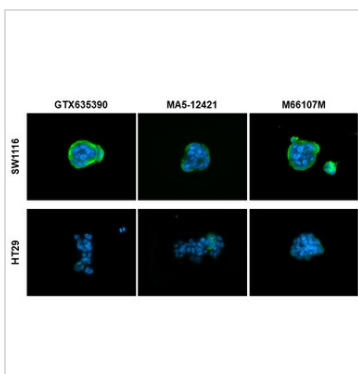

GTX635390 IHC-P Image

CA19-9 antibody [GT252] detects CA19-9 protein at cytoplasm by immunohistochemical analysis.

Sample: Paraffin-embedded human pancreatic cancer.

CA19-9 stained by CA19-9 antibody [GT252] (GTX635390) diluted at 1:500.

Antigen Retrieval: Citrate buffer, pH 6.0, 15 min


GTX635390 ICC/IF Image

CA19-9 antibody [GT252] detects CA19-9 protein at cell membrane by immunofluorescent analysis.

Sample: SW1116 (high expression) and HT29 (low expression) cells were fixed in 4% paraformaldehyde at RT for 15 min.

Green: CA19-9 stained by CA19-9 antibody [GT252] (GTX635390) diluted at 1:1000 and competitor's antibody (MA5-12421 and M66107M) diluted at 1:1000.

Blue: Fluoroshield with DAPI (GTX30920).

*Competitor's antibody is not affiliated with GeneTex and does not endorse this product.

The observed expression level is based on the publication: [PMID: 10212226](https://pubmed.ncbi.nlm.nih.gov/10212226/)



For full product information, images and publications, please visit our [website](https://www.genetex.com).