

## C9orf72 antibody [GT1553-RB]

Cat. No. GTX635398

Host	Rabbit
Clonality	Monoclonal
Isotype	IgG
Applications	WB, ICC/IF, IHC-P
Reactivity	Human, Mouse, Rat

Package  
100 µl, 25 µl

## Applications

## Application Note

\*Optimal dilutions/concentrations should be determined by the researcher.

Suggested dilution	Recommended dilution
WB	1:500-1:3000
ICC/IF	Assay dependent
IHC-P	Assay dependent

Not tested in other applications.

Observed MW (kDa) 54 kDa.

## Properties

Form	Liquid
Buffer	PBS
Preservative	No preservatives
Storage	Store as concentrated solution. Centrifuge briefly prior to opening vial. For short-term storage (1-2 weeks), store at 4°C. For long-term storage, aliquot and store at -20°C or below. Avoid multiple freeze-thaw cycles.
Concentration	1 mg/ml (Please refer to the vial label for the specific concentration.)
Immunogen	Recombinant protein encompassing a sequence within the N-terminus region of human C9orf72. The exact sequence is proprietary.
Purification	Affinity purified by Protein A.
Conjugation	Unconjugated

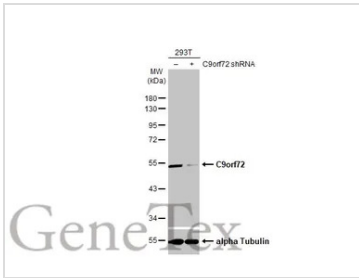
## Note

For laboratory research use only. Not for any clinical, therapeutic, or diagnostic use in humans or animals. Not for animal or human consumption.

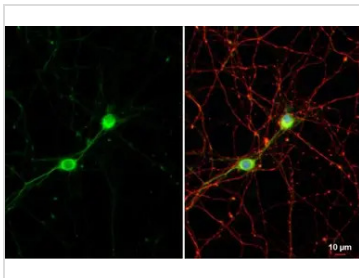
Purchasers shall not, and agree not to enable third parties to, analyze, copy, reverse engineer or otherwise attempt to determine the structure or sequence of the product.



For full product information, images and publications, please visit our [website](#).

**DATA IMAGES**

**GTX635398 WB Image**

Non-transfected (–) and transfected (+) 293T whole cell extracts (30 µg) were separated by 7.5% SDS-PAGE, and the membrane was blotted with C9orf72 antibody [GT1553-RB] (GTX635398) diluted at 1:500. The HRP-conjugated anti-rabbit IgG antibody (GTX213110-01) was used to detect the primary antibody.

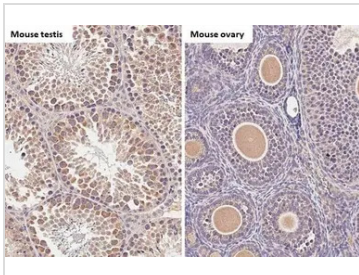

**GTX635398 ICC/IF Image**

C9orf72 antibody [GT1553-RB] detects C9orf72 protein at cytoplasm by immunofluorescent analysis. Sample: DIV10 rat E18 primary hippocampal neuron cells were fixed in 4% paraformaldehyde at RT for 15 min.

Green: C9orf72 stained by C9orf72 antibody [GT1553-RB] (GTX635398) diluted at 1:250.

Red: Tau, a cytoskeleton marker, stained by Tau antibody [GT287] (GTX634809) diluted at 1:500.

Blue: Fluoroshield with DAPI (GTX30920).

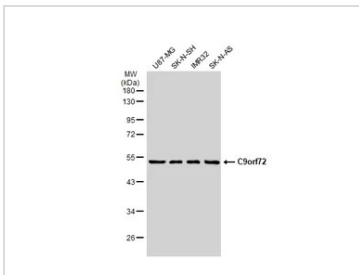

**GTX635398 IHC-P Image**

C9orf72 antibody [GT1553-RB] detects C9orf72 protein at cytoplasm by immunohistochemical analysis.

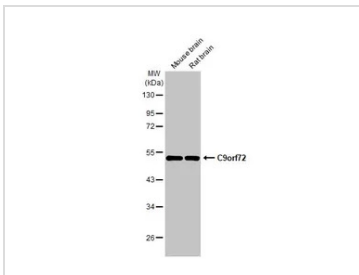
Sample: Paraffin-embedded mouse tissues.

C9orf72 stained by C9orf72 antibody [GT1553-RB] (GTX635398) diluted at 1:100.

Antigen Retrieval: Citrate buffer, pH 6.0, 15 min


**GTX635398 WB Image**

Various whole cell extracts (30 µg) were separated by 10% SDS-PAGE, and the membrane was blotted with C9orf72 antibody [GT1553-RB] (GTX635398) diluted at 1:500. The HRP-conjugated anti-rabbit IgG antibody (GTX213110-01) was used to detect the primary antibody.


**GTX635398 WB Image**

Various tissue extracts (50 µg) were separated by 10% SDS-PAGE, and the membrane was blotted with C9orf72 antibody [GT1553-RB] (GTX635398) diluted at 1:5000. The HRP-conjugated anti-rabbit IgG antibody (GTX213110-01) was used to detect the primary antibody.



For full product information, images and publications, please visit our [website](https://www.genetex.com).