

## Iba1 antibody [HL22-MS]

**Cat. No. GTX635399**

<b>Host</b>	Mouse
<b>Clonality</b>	Monoclonal
<b>Isotype</b>	IgG1
<b>Applications</b>	WB, IHC-P, IHC-Fr
<b>Reactivity</b>	Human, Mouse, Rat

References ( 6 )

Package

100 µl, 25 µl

## Applications

**Application Note**

\*Optimal dilutions/concentrations should be determined by the researcher.

Suggested dilution	Recommended dilution
WB	1:500
IHC-P	1:500
IHC-Fr	Assay dependent

Not tested in other applications.

**Observed MW (kDa)** 17 kDa.**Product Note** Based on sequence homology, this antibody is predicted to recognize Iba-1 isoforms 1 and 2.

## Properties

<b>Form</b>	Liquid
<b>Buffer</b>	PBS
<b>Preservative</b>	No preservatives
<b>Storage</b>	Store as concentrated solution. Centrifuge briefly prior to opening vial. For short-term storage (1-2 weeks), store at 4°C. For long-term storage, aliquot and store at -20°C or below. Avoid multiple freeze-thaw cycles.
<b>Concentration</b>	1 mg/ml (Please refer to the vial label for the specific concentration.)
<b>Immunogen</b>	Carrier-protein conjugated synthetic peptide encompassing a sequence within the C-terminus region of human Iba1. The exact sequence is proprietary.
<b>Purification</b>	Affinity purified by Protein G.
<b>Conjugation</b>	Unconjugated

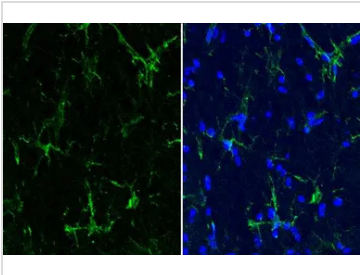


For full product information, images and publications, please visit our [website](#).

For laboratory research use only. Not for any clinical, therapeutic, or diagnostic use in humans or animals. Not for animal or human consumption.

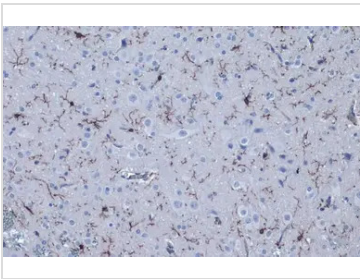
**Note**  
 Purchasers shall not, and agree not to enable third parties to, analyze, copy, reverse engineer or otherwise attempt to determine the structure or sequence of the product.

DATA IMAGES



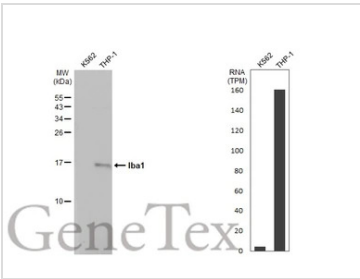
**GTX635399 IHC-Fr Image**

Iba1 antibody [HL22-MS] detects Iba1 protein at cell membrane and cytoplasm by immunohistochemical analysis.  
 Sample: Frozen-sectioned mouse brain.  
 Green: Iba1 stained by Iba1 antibody [HL22-MS] (GTX635399) diluted at 1:25.  
 Blue: Fluoroshield with DAPI (GTX30920).



**GTX635399 IHC-P Image**

Iba1 antibody [HL22-MS] detects Iba1 protein at cytoplasm by immunohistochemical analysis.  
 Sample: Paraffin-embedded rat brain.  
 Iba1 stained by Iba1 antibody [HL22-MS] (GTX635399) diluted at 1:500.  
 Antigen Retrieval: Citrate buffer, pH 6.0, 15 min



**GTX635399 WB Image**

Various whole cell extracts (30 µg) were separated by 15% SDS-PAGE, and the membrane was blotted with Iba1 antibody [HL22-MS] (GTX635399) diluted at 1:1000. The HRP-conjugated anti-rabbit IgG antibody (GTX213110-01) was used to detect the primary antibody, and the signal was developed with Trident ECL plus-Enhanced. Corresponding RNA expression data for the same cell lines are based on Human Protein Atlas program.



For full product information, images and publications, please visit our [website](#).